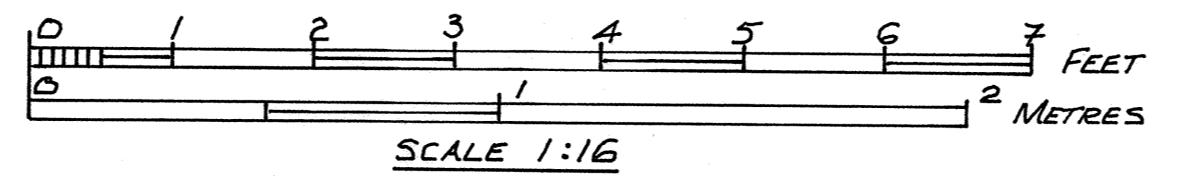


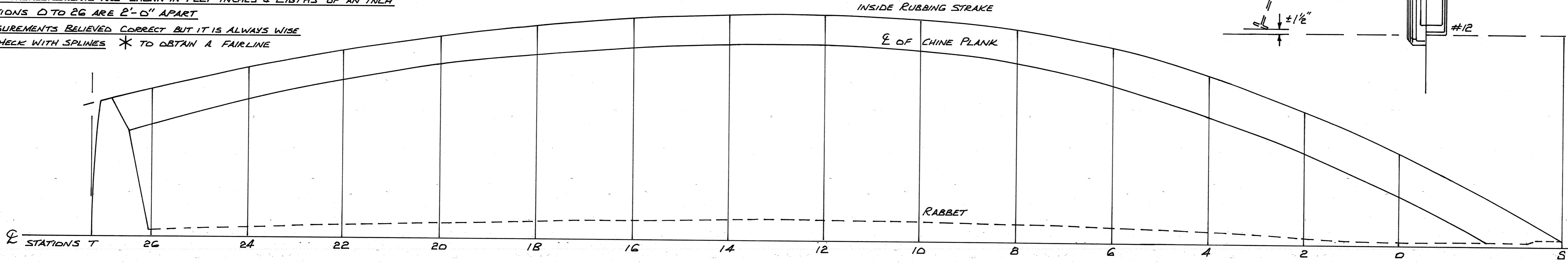
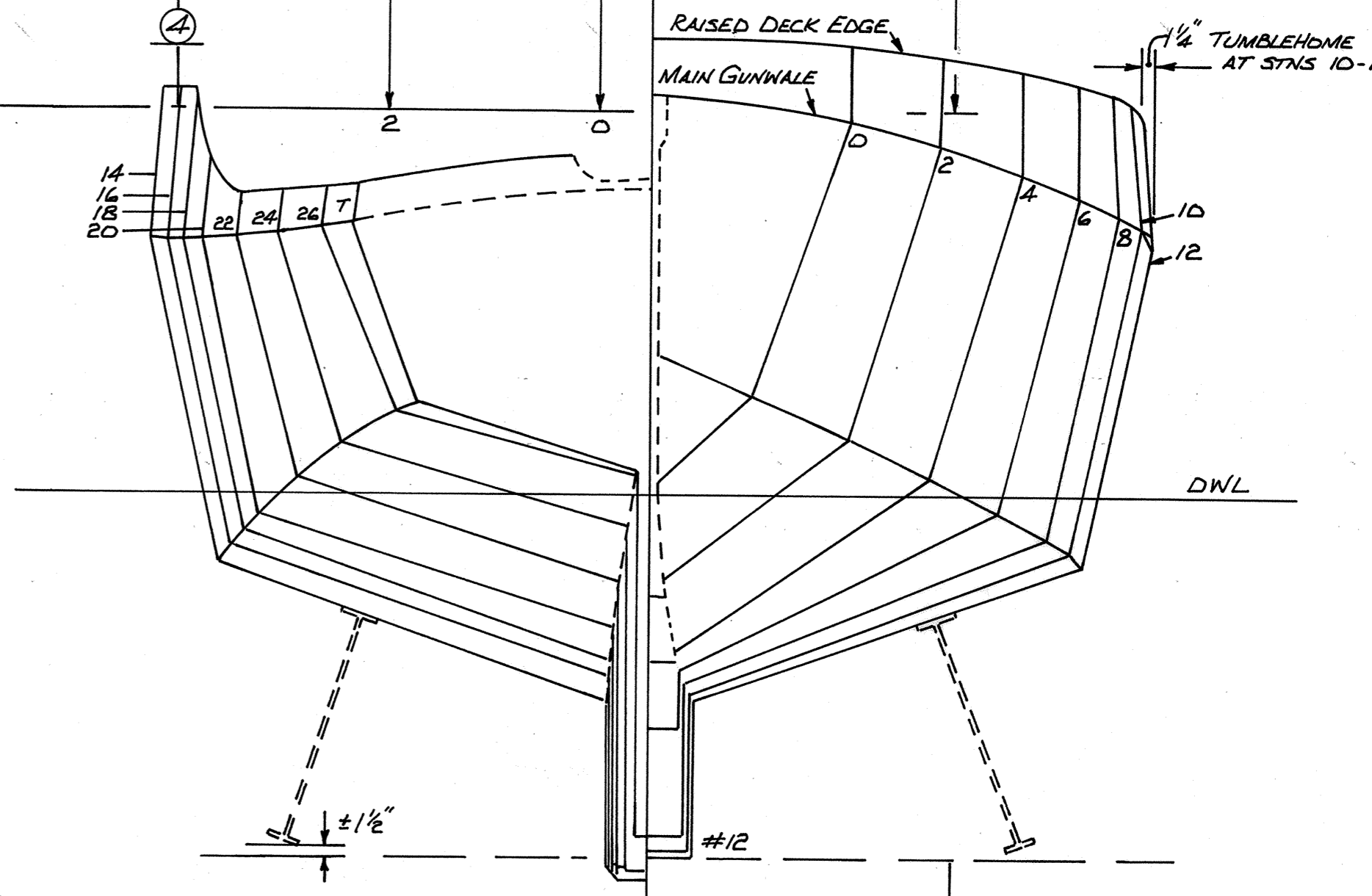
TABLE OF OFFSETS

STATIONS	STEM	0	2	4	6	8	10	12	14	16	18	20	22	24	26	TR' SM
RAISED DECK EDGE	8.54	8.30	8.14	8.04	7.114	7.110	7.106	7.100	7.10.1	7.10.0	7.10.4	6.50	6.54	6.60	6.66	6.74
TOP OF RUB' STRAKE	7.90	7.60	7.36	7.12	6.110	6.92	6.74	6.64	6.51	6.46	6.50	6.54	6.54	6.60	6.66	6.74
CHINE	—	5.16	4.8.1	4.30	3.104	3.72	3.54	3.40	3.40	3.46	3.64	3.96	4.14	4.52	4.96	—
RABBIT (UPPER EDGE)	—	4.14	3.22	2.70	2.40	2.20	2.04	2.06	2.20	2.50	2.90	3.20	3.80	4.30	—	—
RAISED DECKEDGE	—	1.50	2.94	3.62	4.04	4.50	4.66	4.76	4.76	4.56	4.40	4.24	3.106	3.60	3.12	2.94
INSIDE RUB' STRAKE	—	1.50	2.92	3.62	4.10	4.54	4.80	4.90	4.90	4.70	4.52	4.32	3.114	3.64	3.16	2.102
CHINE	—	0.114	1.10.6	2.82	3.40	3.94	4.06	4.14	4.14	3.116	3.100	3.80	3.40	2.110	2.44	2.24
RABBIT	—	—	0.1.6	0.30	0.36	0.44	0.50	0.50	0.50	0.46	0.44	0.40	0.30	0.22	0.14	0.14

UNDERSIDE OF KEEL STRAIGHT FROM STN. 10 TO STN. 22.



1. OFFSET MEASUREMENTS ARE SHOWN IN FEET INCHES & EIGHTHS OF AN INCH.
2. STATIONS 0 TO 26 ARE 2'-0" APART
3. MEASUREMENTS BELIEVED CORRECT BUT IT IS ALWAYS WISE TO CHECK WITH SPLINES * TO OBTAIN A FAIRLINE



—RIPTIDE 31—
DESIGN No 210R
 30'-5" (9.38M) SINGLE CHINE SHOAL DRAUGHT YACHT
 SHEET 1 - LINES & OFFSETS TABLE

LENGTH OD	30FT 5IN
DATUM WL	26" 0"
BEAM (MOULDED)	9" 6"
(AT CHINES)	8" 3"
DRAUGHT TO DWL	3" 8"
DISPLACMT TO DWL	12400 lbs 5624 kg
IRON KEEL	3810 lbs 1728 kg
BILGE KEELS	680 lbs 308 kg

COPYRIGHT OF
 MAURICE GRIFFITHS
 WEST MERSEA ESSEX ENG.