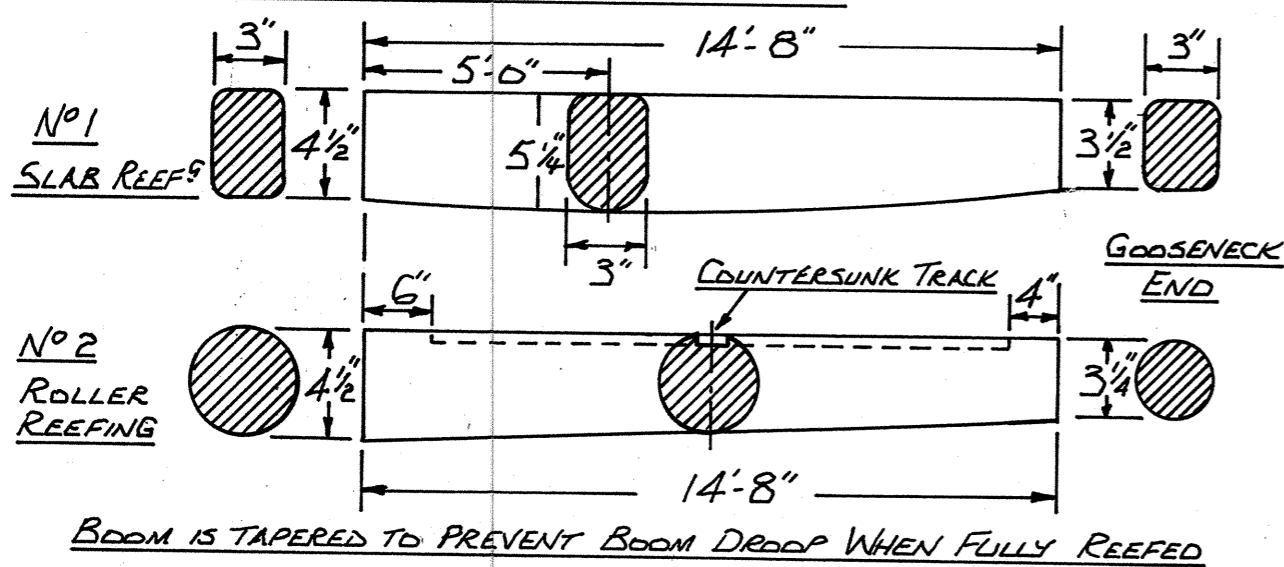


RIPTIDE 31 ~ DESIGN 208					
SAIL	LUFF	FOOT	LEECH	AREA / FT ² / METRE ²	WT. TERYLENE
MAINSAIL	35'-6"	14'-0"	37'-3"	254 FT ²	23.62
FORESTAYS'L	22'-4"	8'-8"	20'-8"	89 "	8.27
Nº1 JIB	30'-0"	11'-2"	23'-5"	120 "	11.15
Nº2 JIB	17'-6"	7'-0"	13'-6"	44 "	4.09
GENDA	37'-6"	18'-0"	36'-2"	318 "	29.42

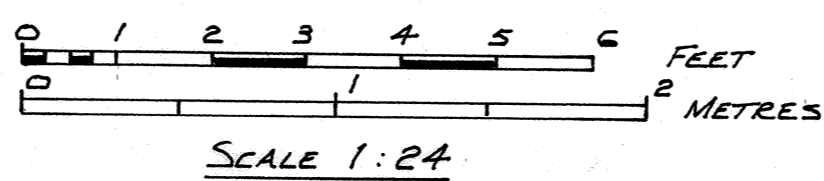
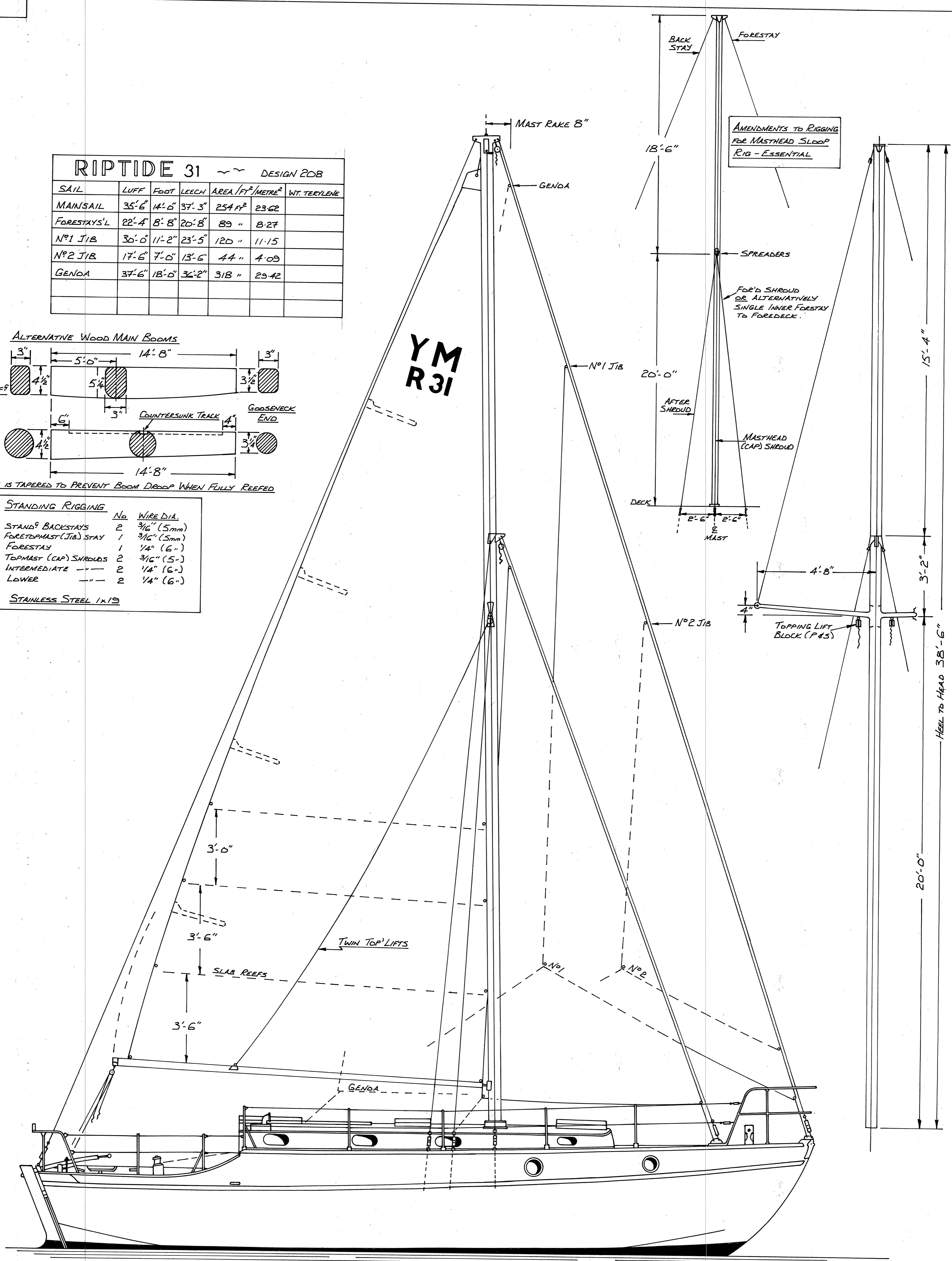
ALTERNATIVE WOOD MAIN BOOMS



BOOM IS TAPERED TO PREVENT BOOM DROOP WHEN FULLY REEFED

STANDING RIGGING		
	No	WIRE DIA.
STAND ⁹ BACKSTAYS	2	3/16" (5mm)
FORETOPMAST (JIB) STAY	1	3/16" (5mm)
FORESTAY	1	1/4" (6")
TOPMAST (CAP) SHROUDS	2	3/16" (5")
INTERMEDIATE	2	1/4" (6")
LOWER	2	1/4" (6")

STAINLESS STEEL 1x19



COPYRIGHT OF
MAURICE GRIFFITHS
WEST MERSEA ESSEX ENGLAND

RIPTIDE 31
DESIGN 210R ~ SHEET 4
30.75FT (9.38M) CRUISING YACHT
SAIL & RIGGING PLAN