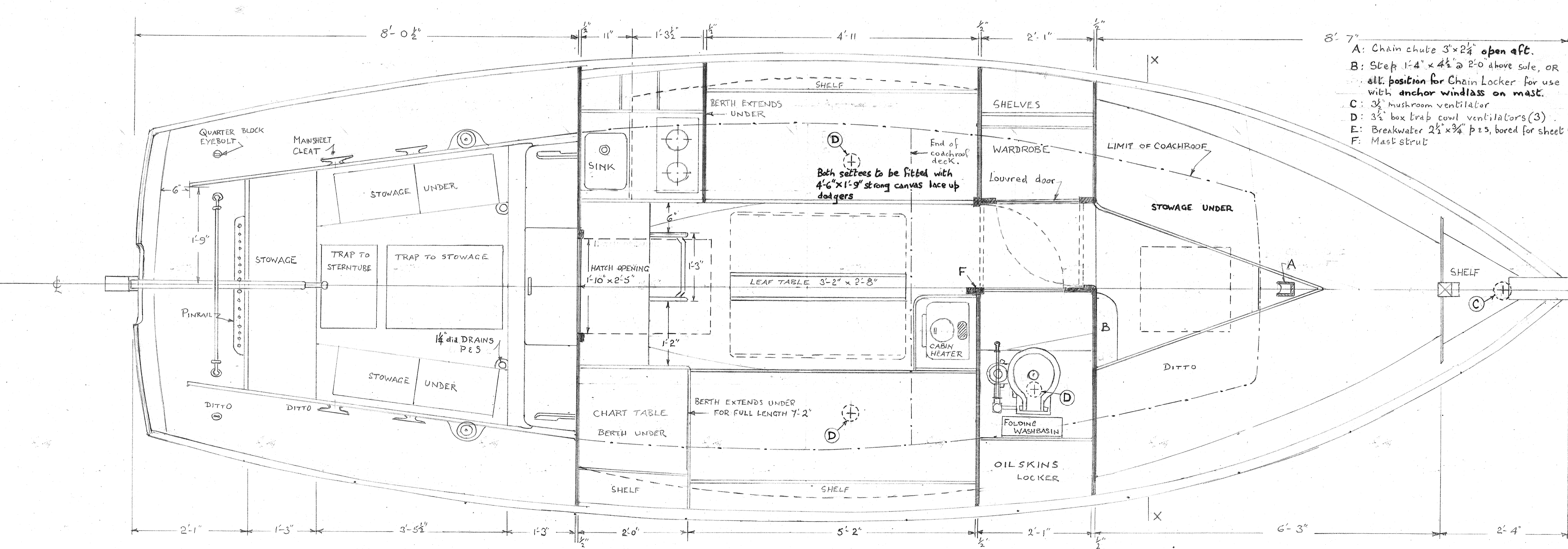
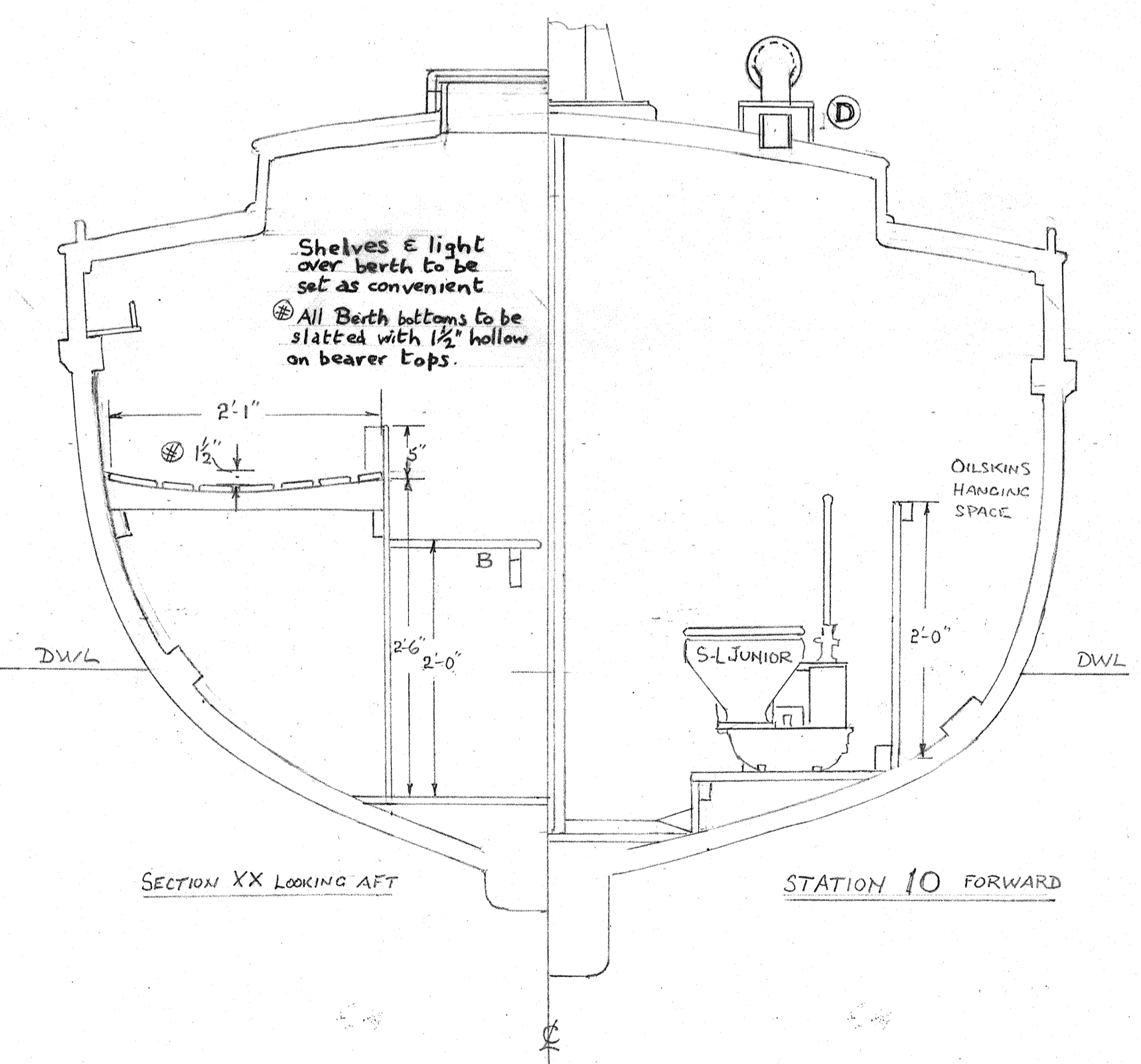


F: Shelf 4" with 3" fiddle, p.t.s.  
 G: Clear Perspex sliding panel opening 6" x 8"  
 H: Compass Perspex panel min. 6" x 8"



A: Chain chute 3" x 2 1/2" open aft.  
 B: Step 1'-4" x 4 1/2" @ 2'-0" above sole, OR alt. position for Chain Locker for use with anchor windlass on mast.  
 C: 3/4" mushroom ventilator  
 D: 3 1/2" box drap cowl ventilators (3)  
 E: Breakwater 2 1/2" x 3/4" p.t.s. bored for sheet leads  
 F: Mast strut



SCALE 1"=1'-0" (1:12)		<b>STORM CLASS - 7 TONS T.M.</b>	
LOA	26'-0"	DESIGN 192 - SHEET N° 2	
LWL	23'-0"	GENERAL ARRANGEMENT PLAN	
BEAM	8'-6"	COPYRIGHT OF MAURICE GRIFFITHS	
DRAUGHT	3'-4"	WEST MERSEA, ESSEX - ENGLAND	