

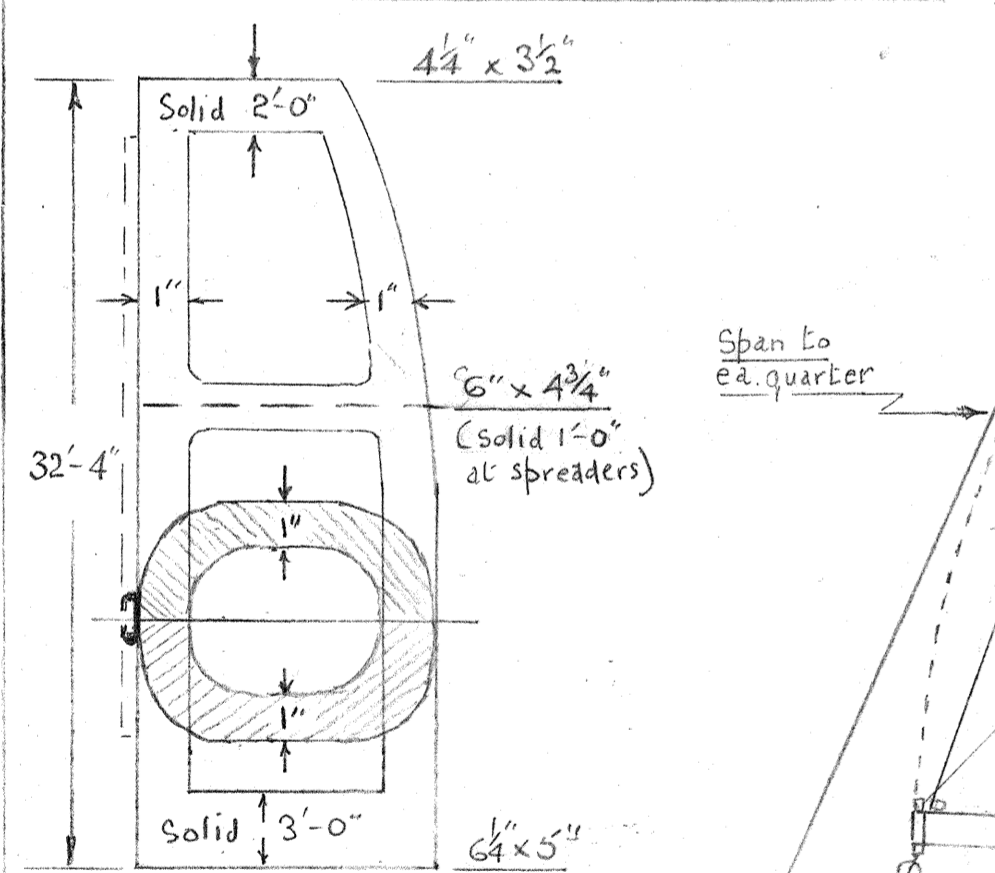
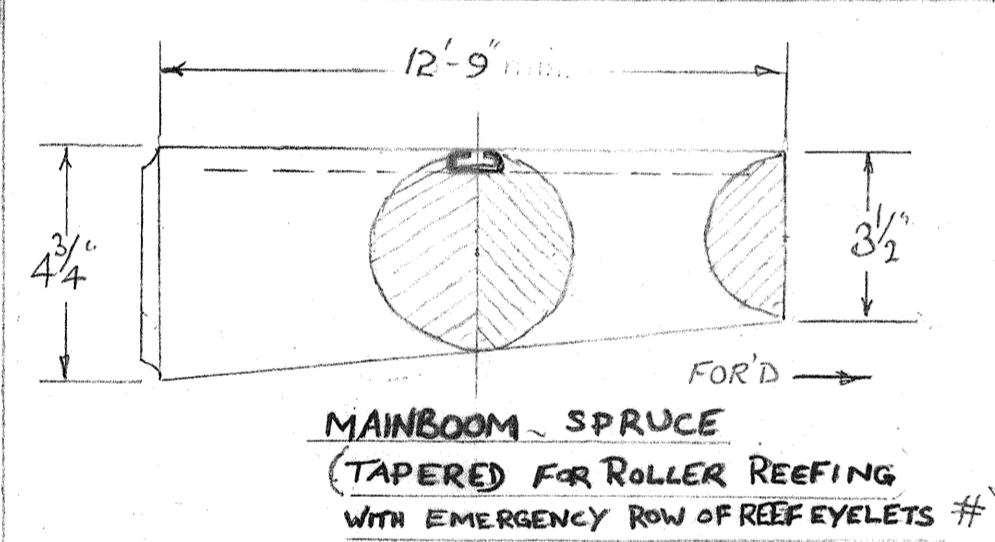
DESIGN 192: WORK PLAN  
 MODS  
 1. 20.9.84  
 2. 27.5.85

SAILS					
Sail	Luff	Leech	Foot	Area	Recommend No. of Terylene
<b>RIG A</b>					
MAINSAIL	29'-0"	30'-7"	12'-0"	175	6 02
Nº1 JIB	23'-0"	21'-8"	9'-6"	104	6 02
Nº2 JIB	17'-0"	15'-3"	7'-6"	60	6 02
GENOA	30'-0"	28'-9"	12'-8"	180	4 02
<b>RIG B</b>					
MAINSAIL	29'-0"	30'-7"	12'-0"	175	6 02
STAYSAIL	19'-0"	16'-4"	10'-0"	81	6 02
JIB	23'-0"	18'-8"	8'-0"	70	6 02
GENOA	30'-0"	28'-0"	15'-0"	210	4 02

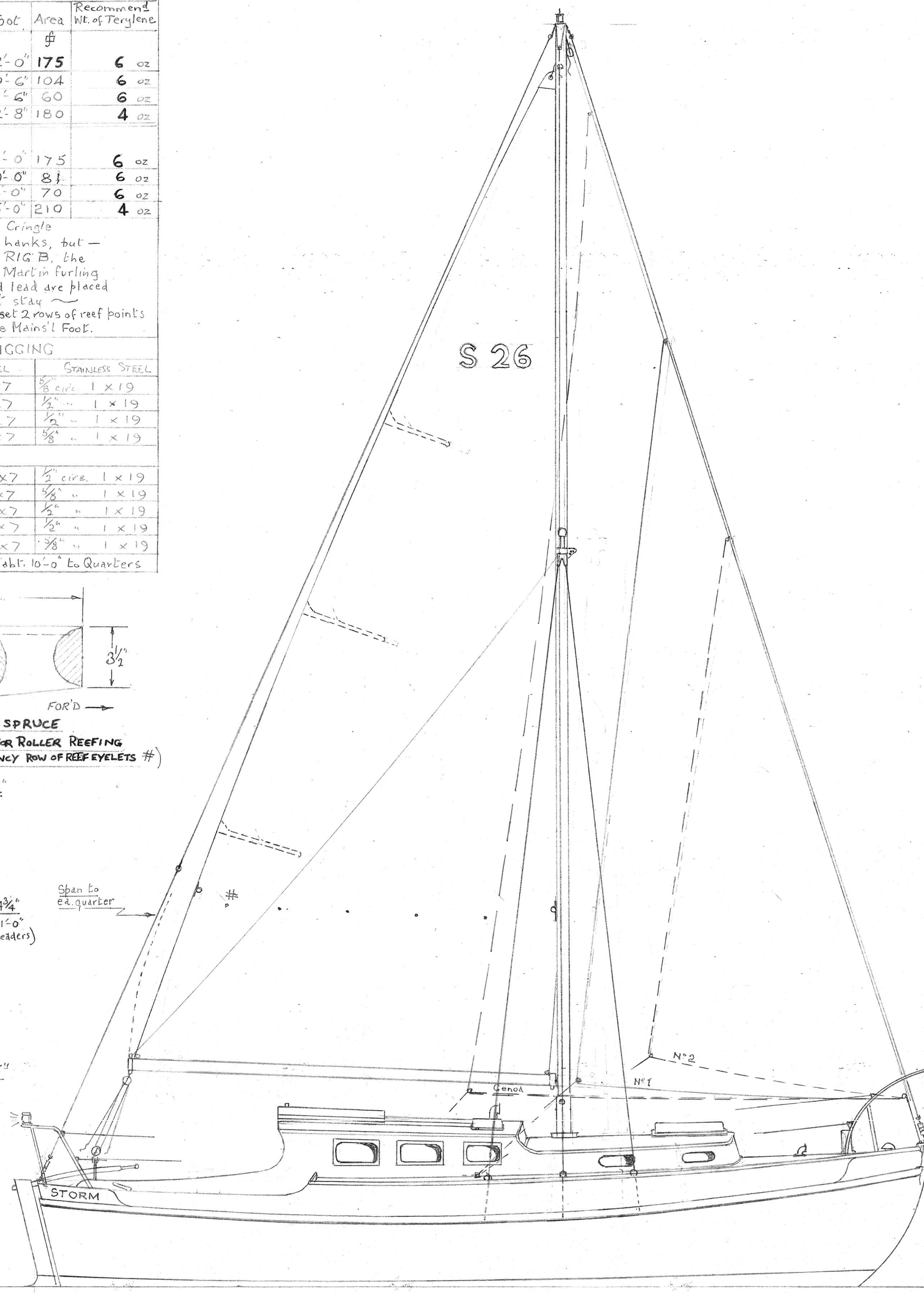
All measurements Cringle to Cringle  
 Headsails to set on piston hanks, but -  
 if preferred in the cutter, RIG B, the  
 Jib can be set on Wykeham Mart in furling  
 gear if the back & halyard lead are placed  
 6" clear of the fore topmast stay  
 For MAINSAIL SLAB REEFING set 2 rows of reef points  
 at 4'-0" and 7'-0" above Mainsail Foot.

STANDING RIGGING		
RIG - A	GALV. PLOUGH STEEL	STAINLESS STEEL
JIBSTAY	3/4" circ. 7 x 7	3/8" circ. 1 x 19
* MASTHD BACKSTAY	5/8" " 7 x 7	1/2" " 1 x 19
TOPMAST SHROUDS	3/8" " 7 x 7	1/2" " 1 x 19
MAIN SHROUDS	3/4" " 7 x 7	3/8" " 1 x 19
<b>RIG - B</b>		
TOPMAST FORESTAY	5/8" circ. 7 x 7	1/2" circ. 1 x 19
FORESTAY	3/4" " 7 x 7	3/8" " 1 x 19
* MASTHD BACKSTAY	5/8" " 7 x 7	1/2" " 1 x 19
TOPMAST SHROUDS	3/8" " 7 x 7	1/2" " 1 x 19
MAIN SHROUDS	3/4" " 7 x 7	3/8" " 1 x 19

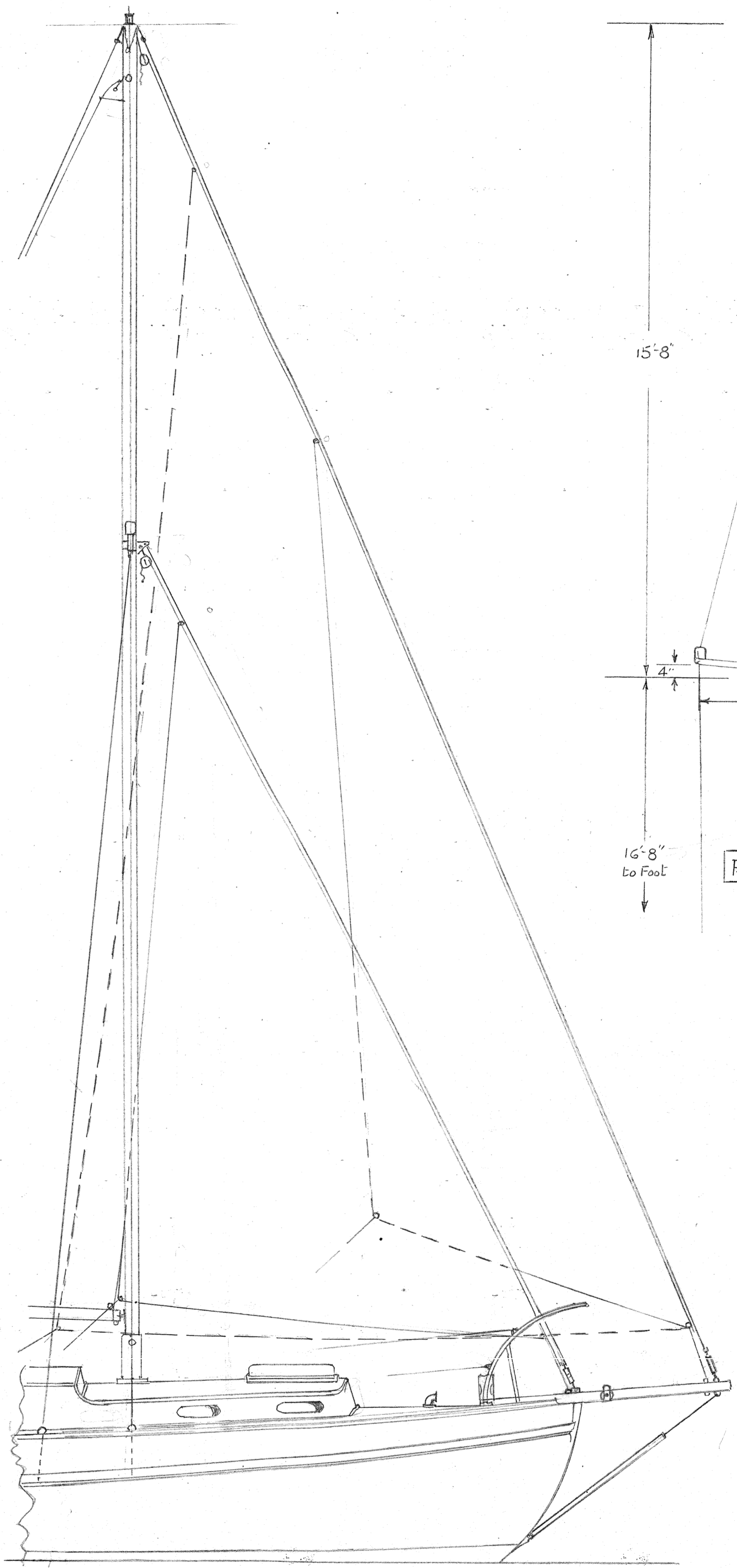
\* Top Mast stay to have span to lead abt. 10'-0" to Quarters



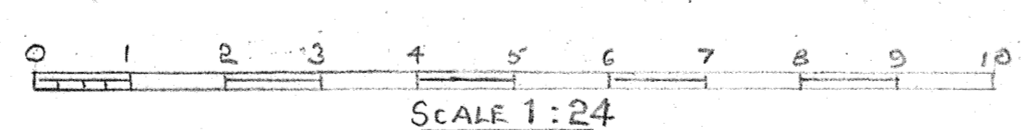
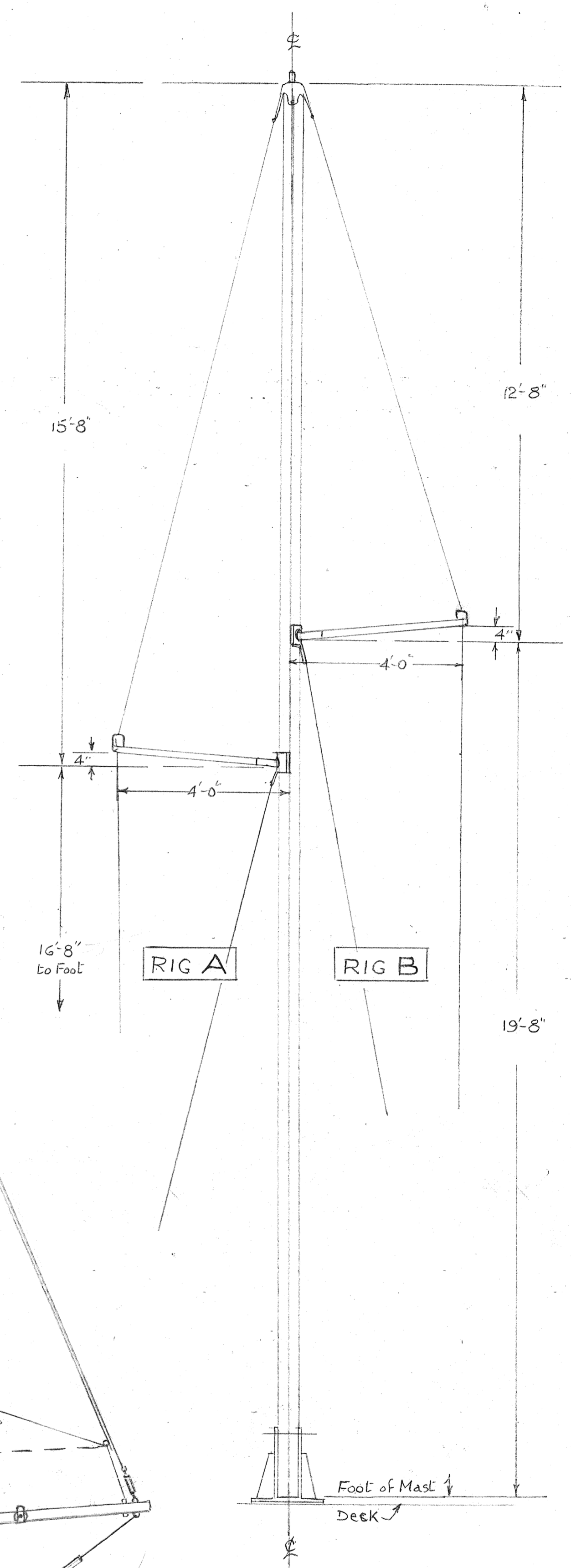
MAST SPRUCE HOLLOW  
 RIG A or B



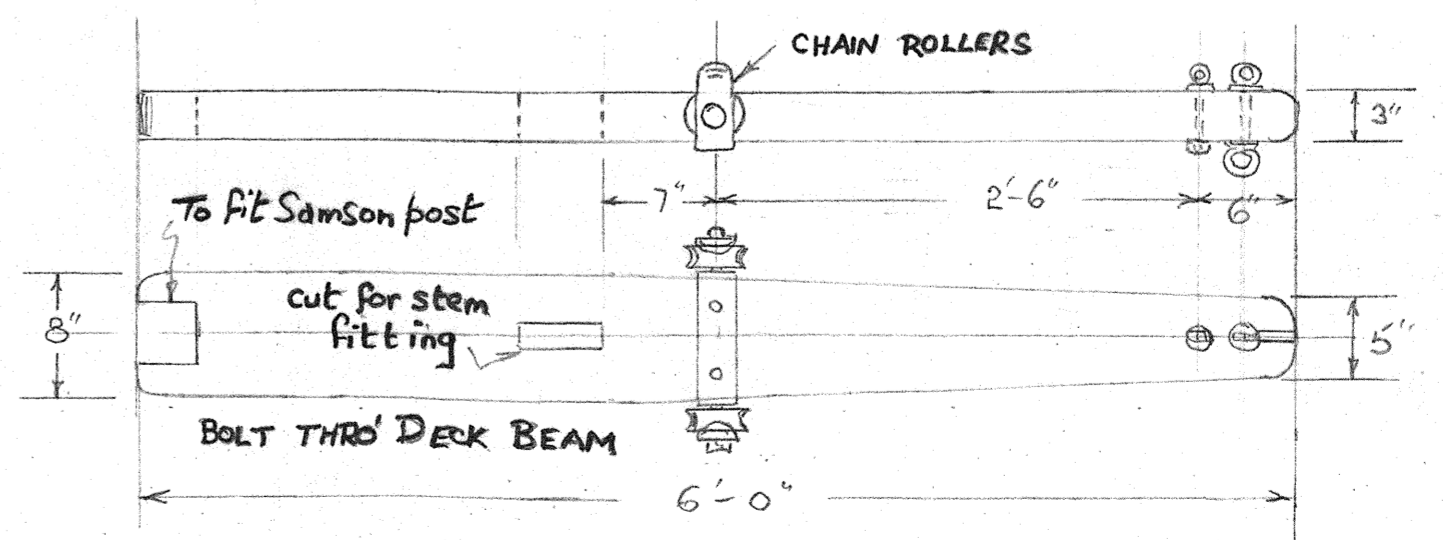
RIG A



RIG B



SCALE 1:24



PLANK BOWSPRIT

Scale 1:12

Fit with 3/8" dia solid galv'd steel  
 red Bobstay with fork ends.  
 Cover lower half with  
 Polythene hose against  
 cable chafe

STORM CLASS ~ 7 TONS T.M.  
 DESIGN 192 ~ SHEET 4 SCALE 1:24  
 SAIL PLANS A, B and RIGGING PLAN  
 COPYRIGHT of  
 MAURICE GRIFFITHS  
 WEST MERSEA ~ ESSEX ~ ENGLAND