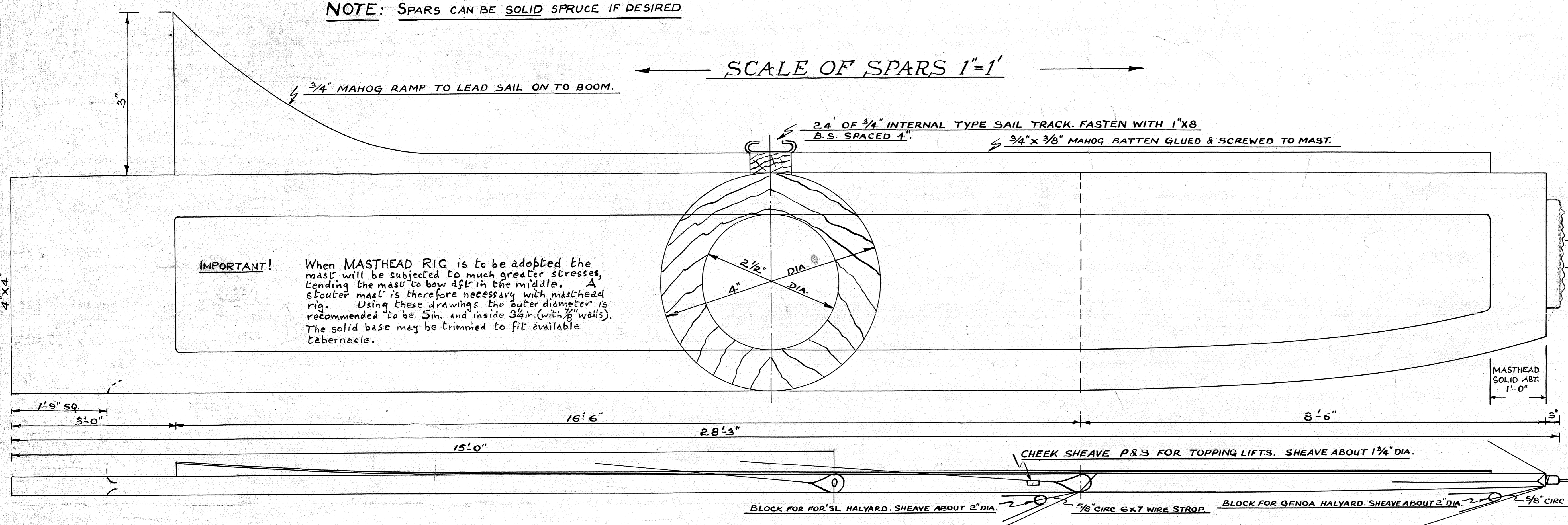
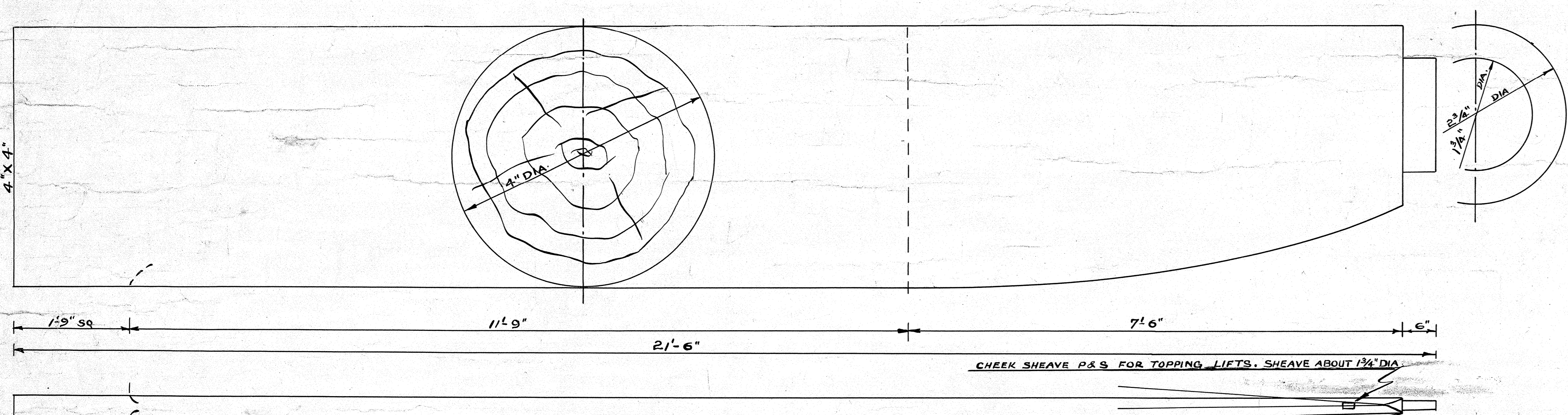


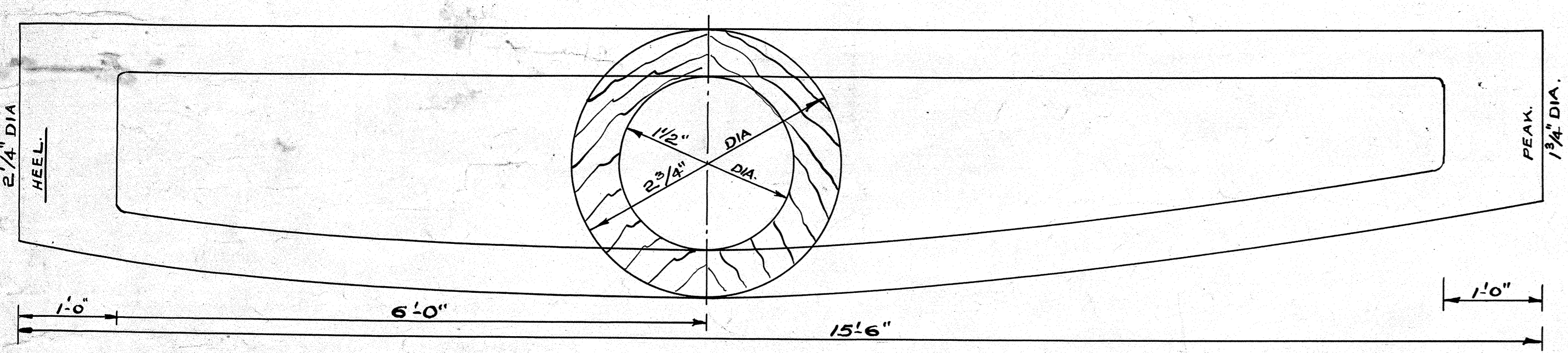
NOTE: SPARS CAN BE SOLID SPRUCE IF DESIRED



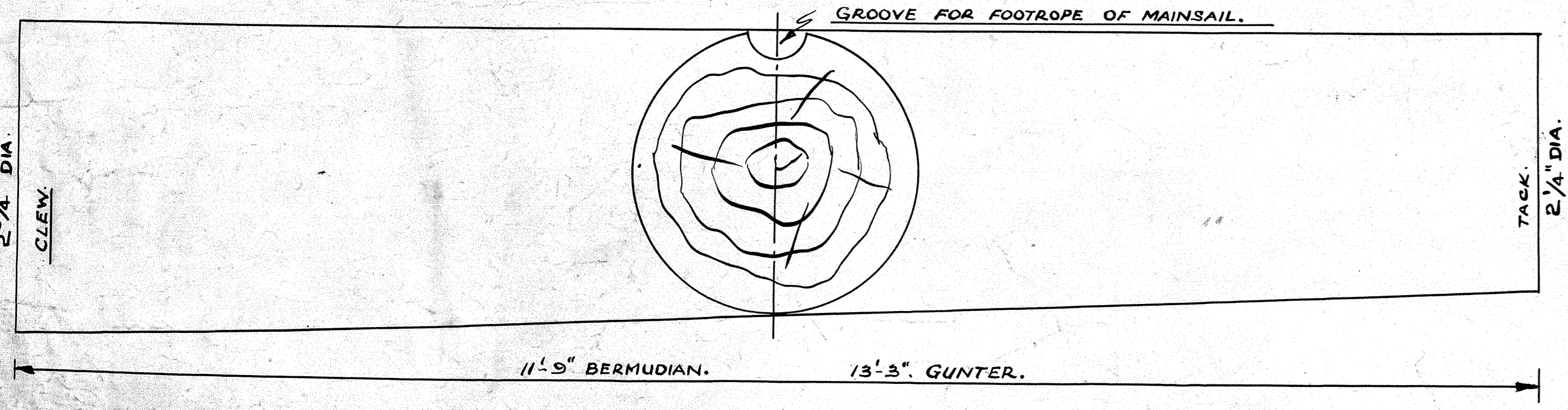
MAST FOR BERMUDIAN RIG. SILVER SPRUCE.



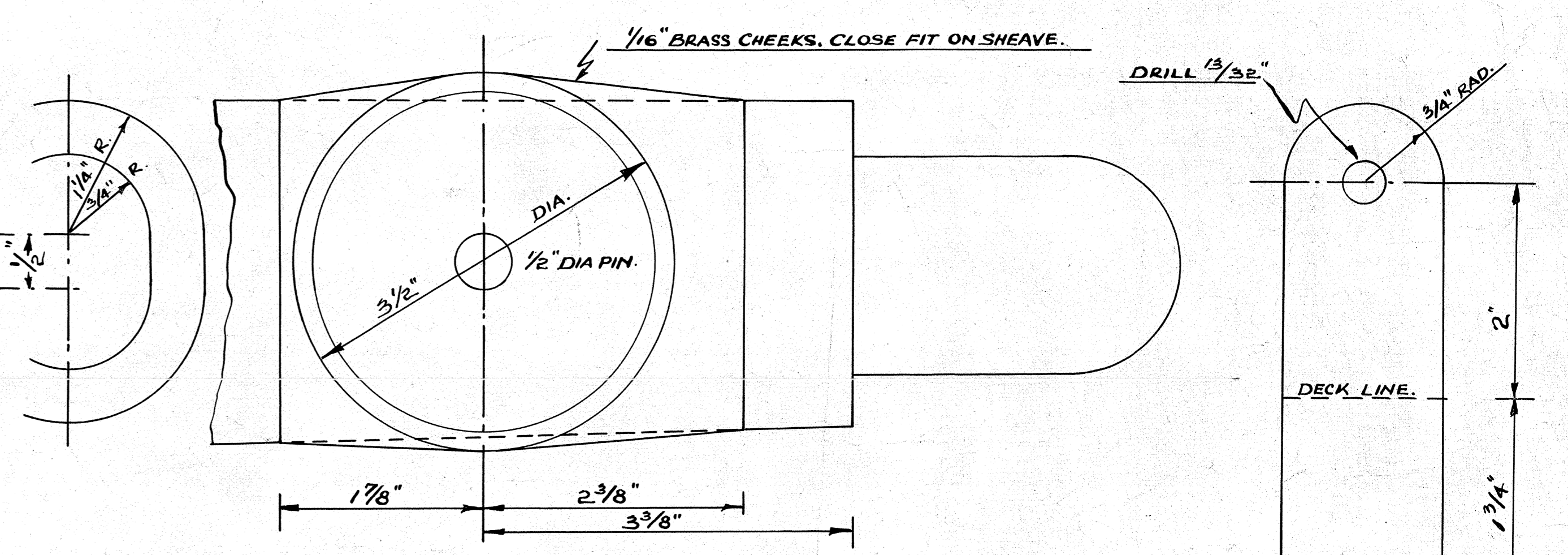
MAST FOR GUNTER RIG. SILVER SPRUCE. SOLID.



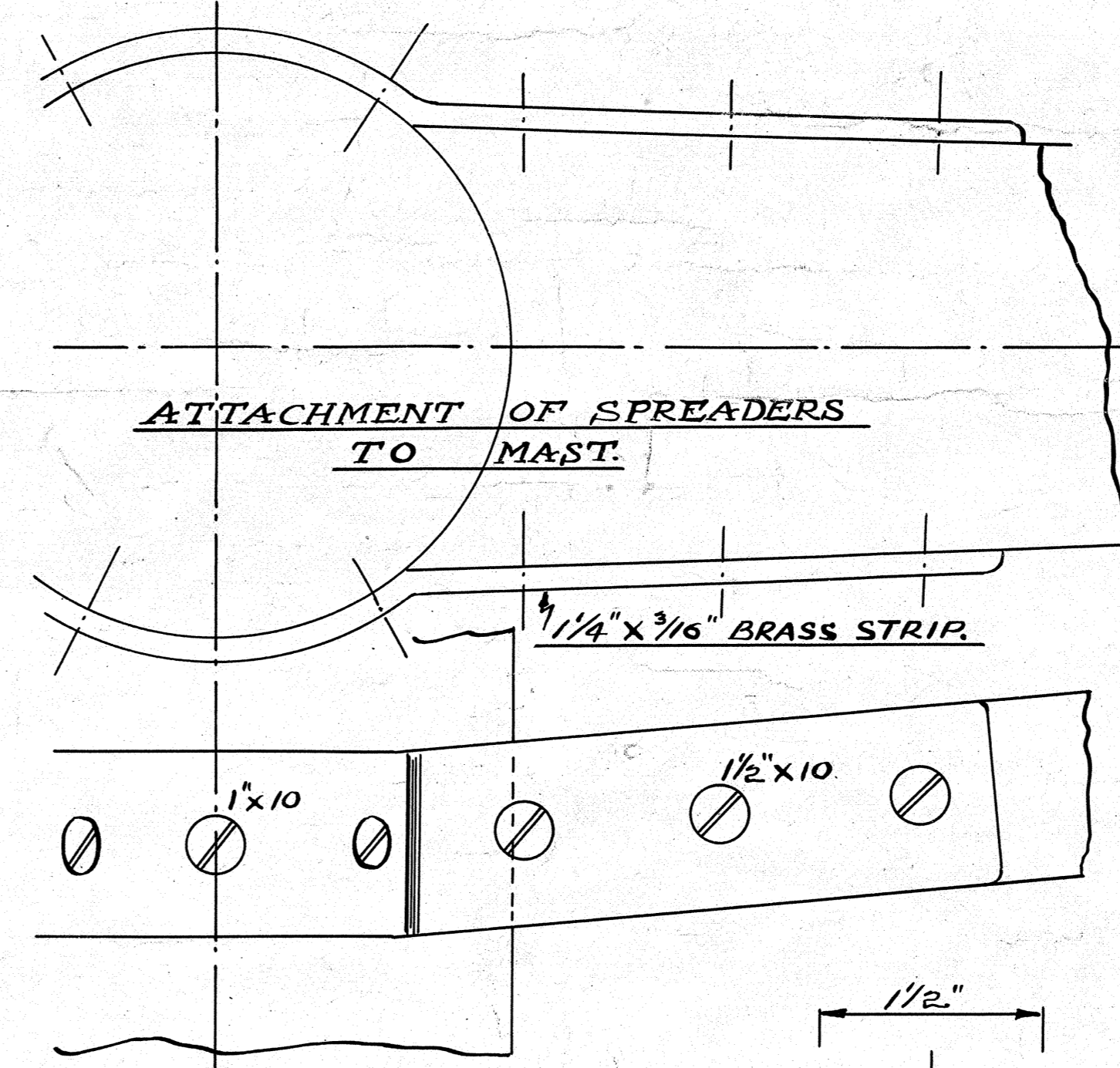
GUNTER YARD. SILVER SPRUCE.



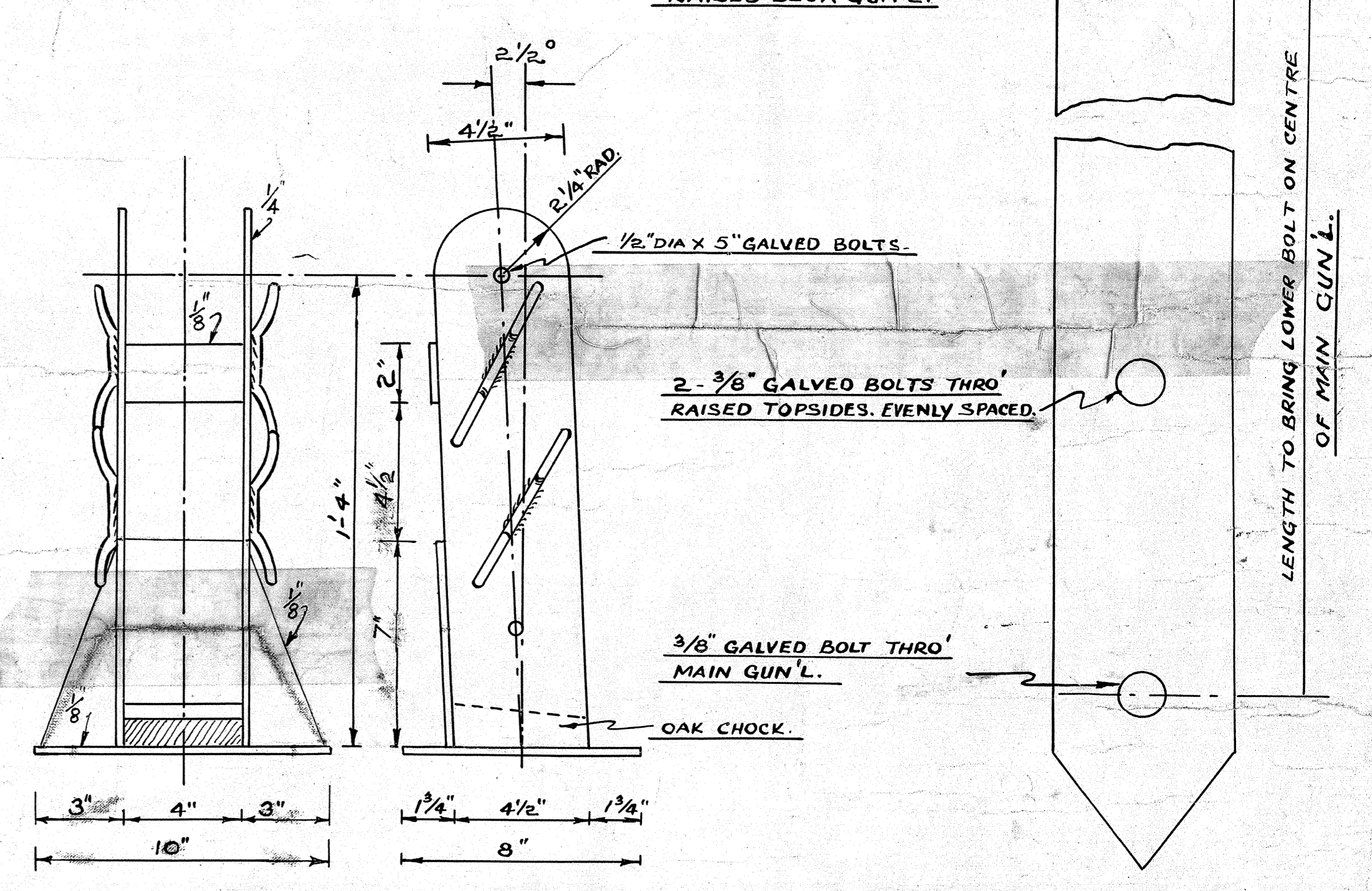
BOOM. BERMUDIAN & GUNTER RIG. SILVER SPRUCE. SOLID.



DETAIL OF MASTHEAD SHEAVE. BERMUDIAN OR GUNTER.



ATTACHMENT OF SPREADERS TO MAST.



TABERNACLE. GUNTER OR BERMUDIAN RIG. ALL WELDED CONSTRUCTION. 3/4 MILD STEEL. GALV.

CHAIN PLATES. 1/2 x 1/4 MILD STEEL GALV.

STANDING RIGGING. BERMUDIAN.

FORESTAY.	3/4" CIRC. 6 X 7 GALV'D PLOUGH STEEL. 21' APPROX EYE TO EYE. 16" CIRC SOFT EYE IN TOP. SPLICE LOWER END TO 1/2" BOTTLE SCREW.
TOPMAST FORESTAY.	3/8" CIRC. 6 X 7 GALV'D PLOUGH STEEL. 2.9' APPROX EYE TO EYE. 8" CIRC SOFT EYE IN TOP. SPLICE LOWER END TO 3/8" BOTTLE SCREW.
LOWER SHROUDS.	3/4" CIRC. 6 X 7 GALV'D PLOUGH STEEL. 14'6" APPROX EYE TO EYE. 16" CIRC SOFT EYE IN TOP. SPLICE LOWER END TO 1/2" BOTTLE SCREW.
INTERMEDIATE SHROUDS.	3/4" CIRC. 6 X 7 GALV'D PLOUGH STEEL. 19' APPROX EYE TO EYE. 16" CIRC SOFT EYE IN TOP. SPLICE LOWER END TO 1/2" BOTTLE SCREW.
TOPMAST SHROUDS.	3/8" CIRC. 6 X 7 GALV'D PLOUGH STEEL. 2.8' APPROX EYE TO EYE. 8" CIRC SOFT EYE IN TOP. SPLICE LOWER END TO 3/8" BOTTLE SCREW.
BACKSTAY.	3/8" CIRC. 6 X 7 GALV'D PLOUGH STEEL. 30'6" APPROX EYE TO EYE. 8" CIRC SOFT EYE IN TOP. SPLICE LOWER END TO 3/8" BOTTLE SCREW.

STANDING RIGGING. GUNTER.

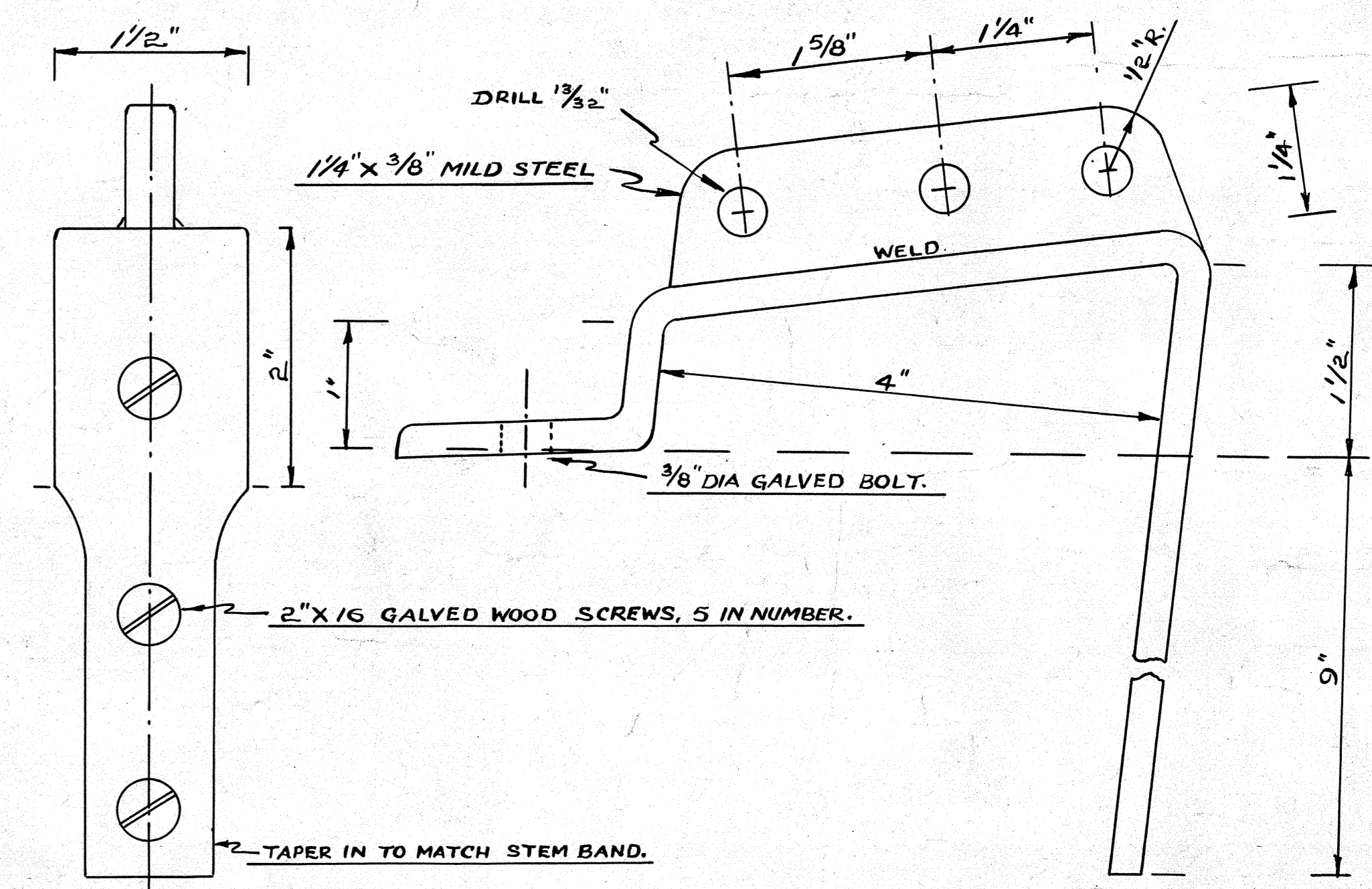
FORESTAY.	3/4" CIRC. 6 X 7 GALV'D PLOUGH STEEL. 21'6" APPROX EYE TO EYE. 6" CIRC SOFT EYE IN TOP. SPLICE LOWER END TO BLOCK WITH 2" TO 2 1/2" SHEAVE.
SHROUDS.	3/4" CIRC. 6 X 7 GALV'D PLOUGH STEEL. 20'6" APPROX EYE TO EYE. 6" CIRC SOFT EYE IN TOP. SPLICE LOWER END TO 1/2" BOTTLE SCREW.

RUNNING RIGGING. BERMUDIAN.

MAIN HALYARD.	1 1/4" CIRC HEMP. 56'. EYE ON THIMBLE ONE END ONLY.
FOR'SL HALYARD.	1 1/4" CIRC HEMP. 44. " " " " " " " "
GENNA "	1 1/4" CIRC HEMP. 56. " " " " " " " "
TOPPING LIFTS. (2)	1" CIRC HEMP. 48. " " " " " " " "
MAIN SHEET.	1 1/4" CIRC BRADED COTTON. 50'.

RUNNING RIGGING. GUNTER.

MAIN HALYARD.	1 1/4" CIRC HEMP. 46'. EYE ON THIMBLE ONE END ONLY.
FOR'SL "	1 1/4" CIRC HEMP. 42. " " " " " " " "
TOPPING LIFTS. (2)	1" CIRC HEMP. 45. " " " " " " " "
MAINSHEET.	1 1/4" CIRC BRADED COTTON. 50'.



STEMHEAD FITTING. 1/2 x 1/4 MILD STEEL. GALV.