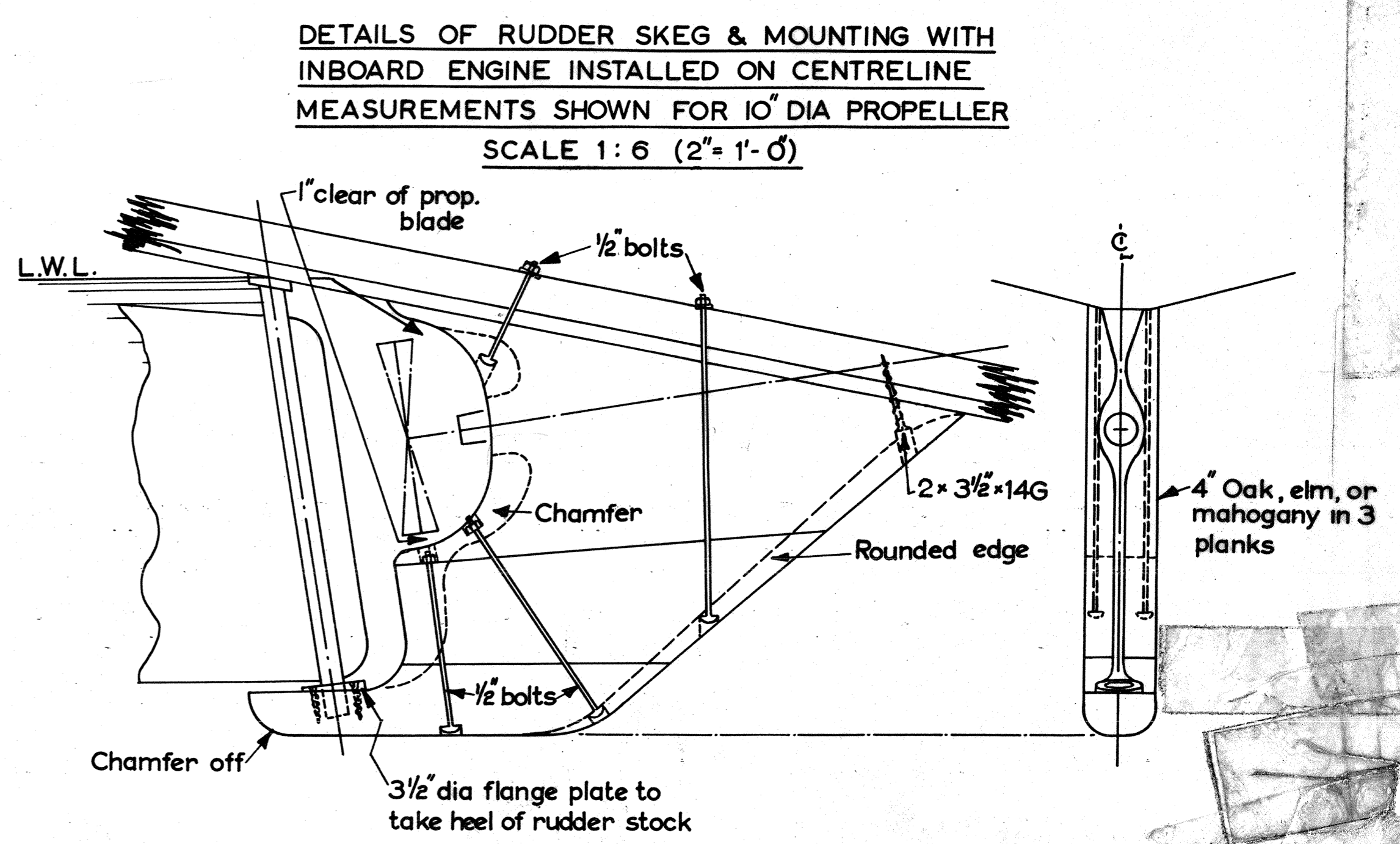
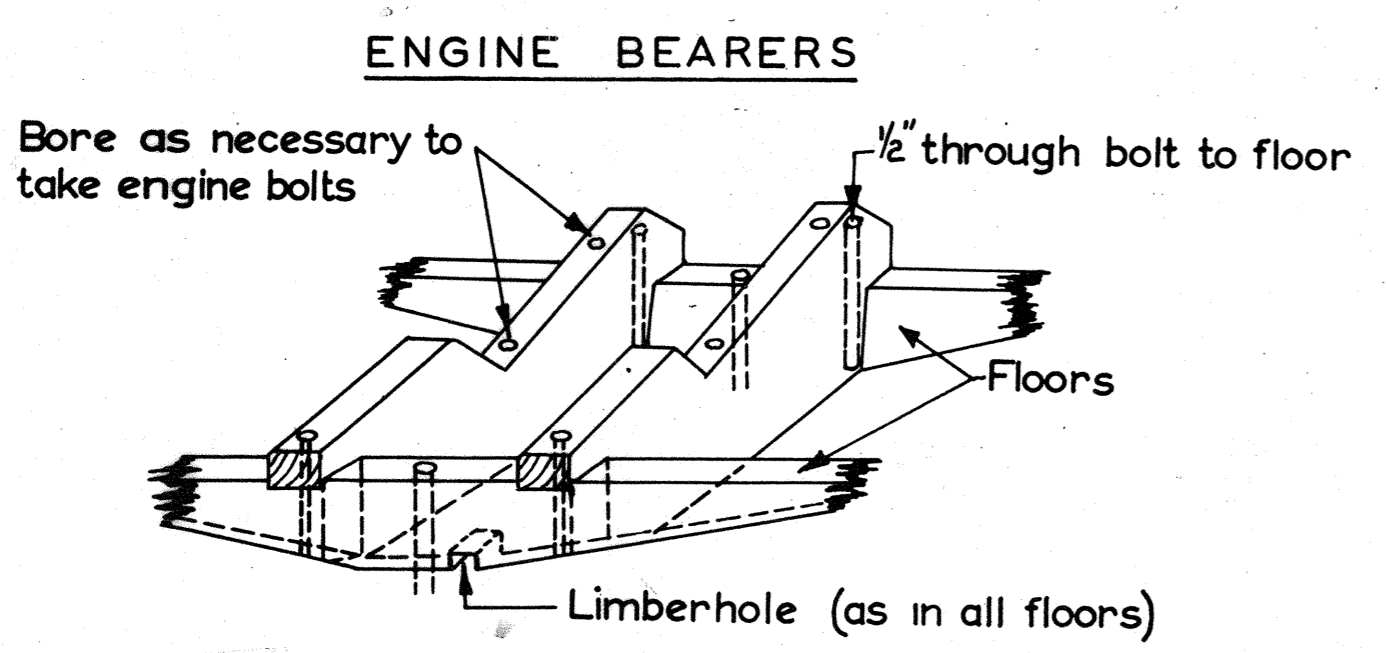
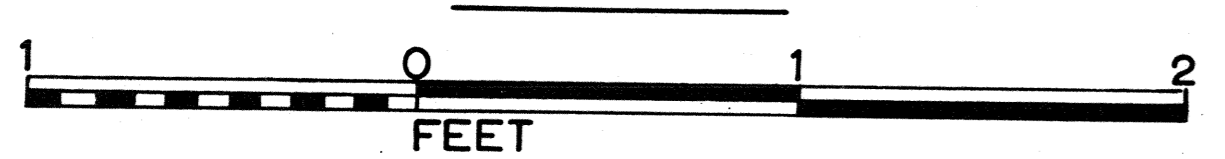


SECTION IN WAY OF KEEL BOLT  
SCALE 1:3



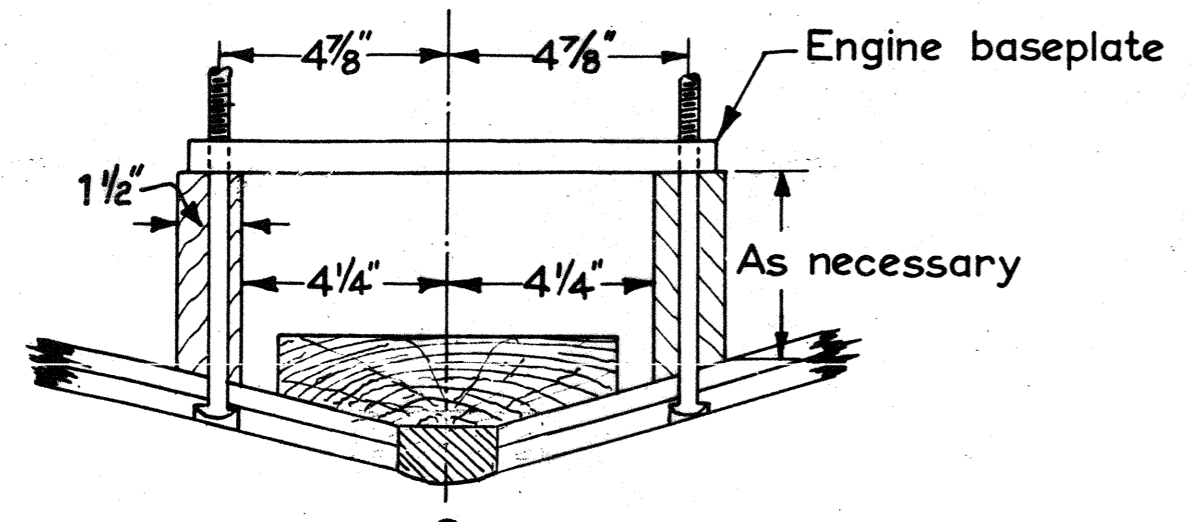
DETAILS OF RUDDER SKEG & MOUNTING WITH INBOARD ENGINE INSTALLED ON CENTRELINE  
MEASUREMENTS SHOWN FOR 10" DIA PROPELLER  
SCALE 1:6 (2" = 1'-0")

760 lbs. CAST IRON KEEL FOR FIN KEEL MODEL  
SCALE 1:6



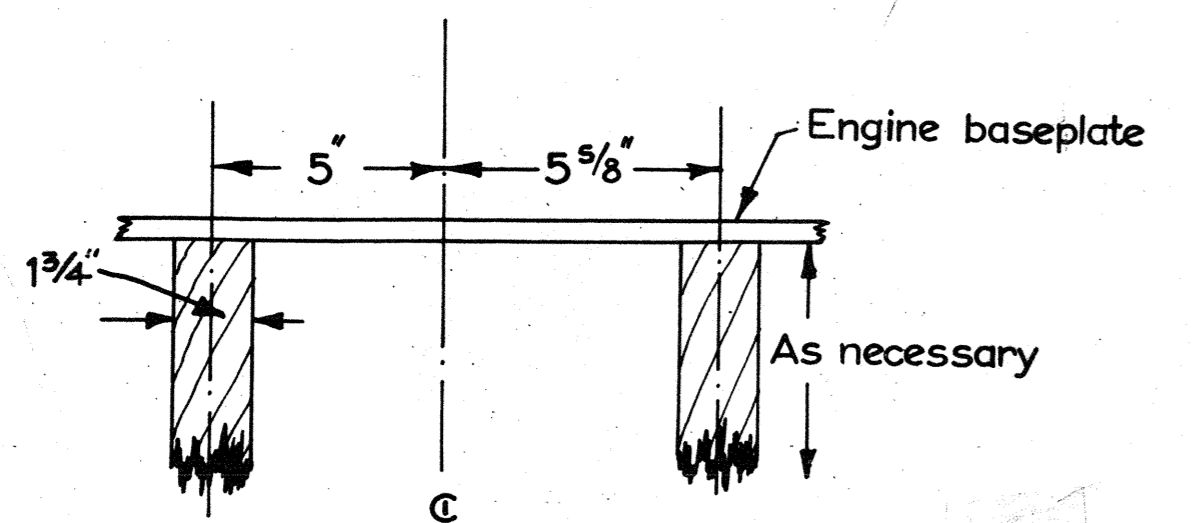
ENGINE BEARERS

1 BEARERS FOR "COVENTRY VICTOR MIDGET"

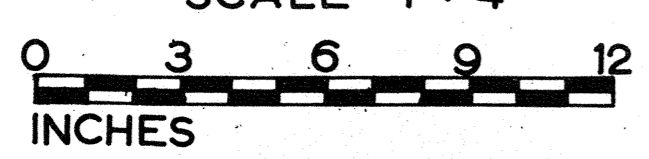


SCALE 1:4

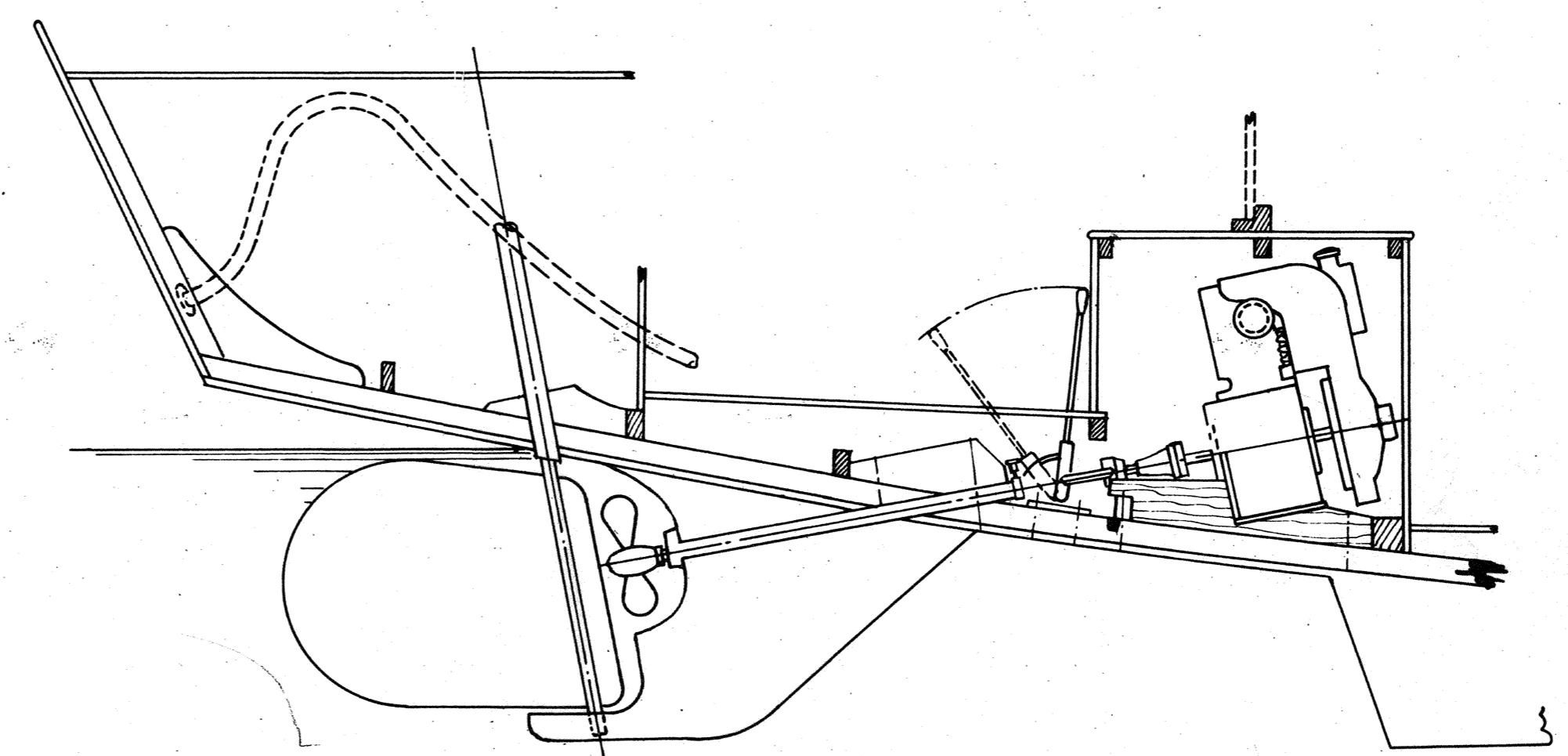
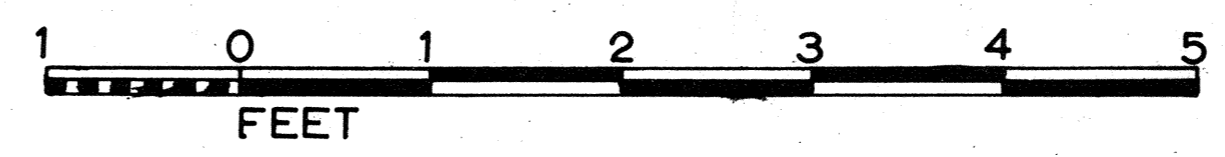
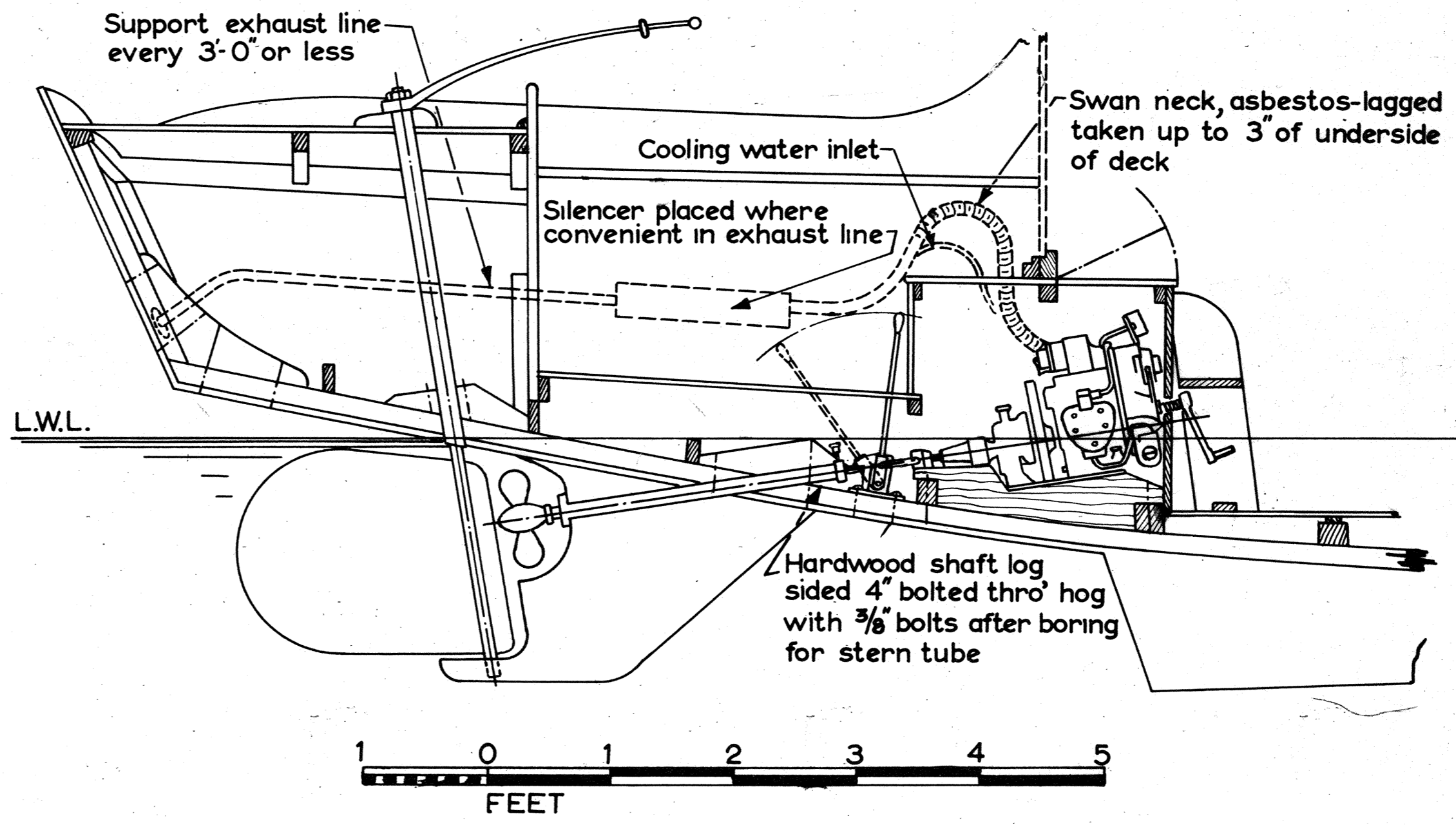
2 BEARERS FOR "JAP MODEL 5"



SCALE 1:4



AUXILIARY ENGINE INSTALLATIONS  
SCALE 1:12 (1" = 1'-0")



1 COVENTRY VICTOR MIDGET MODEL MW1 OR MW2 WITH REVERSING PROPELLER (STANTON) OR WITH SAILING CLUTCH AS FITTED TO SOUTH COAST O.D. CLASS 6 TONNERS. (COVENTRY VICTOR MOTOR CO. LTD., COX STREET, COVENTRY, ENGLAND)

2 JAP MODEL 5 AIR COOLED 3 1/2 / 4 1/2 H.P. AS SHOWN (OR MODEL 4/3 1 3/4 / 3 1/2 H.P. - SLIGHTLY SMALLER OVERALL) WITH STANTON REVERSING-FEATHERING PROPELLER GEAR (WORTHAM-BLAKE LTD., 1394 HIGH ROAD, LONDON N.20)

- OTHER POSSIBLE BRITISH INBOARD AUXILIARY ENGINES FOR THIS BOAT ARE:-
- (a) STUART TURNER R3MC. 1 1/2 H.P. (2 STROKE)
  - (b) STUART TURNER P5MC. 4 H.P. do
  - (c) BRIT MINOR 4 H.P. 4 STROKE PETROL
  - (d) LISTER LDM. 4 1/4 H.P. AIR COOLED DIESEL
  - (e) WATERMOTA SEA URCHIN 3 HP JAP 2 STROKE
  - (f) PENTA MD1 5 HP