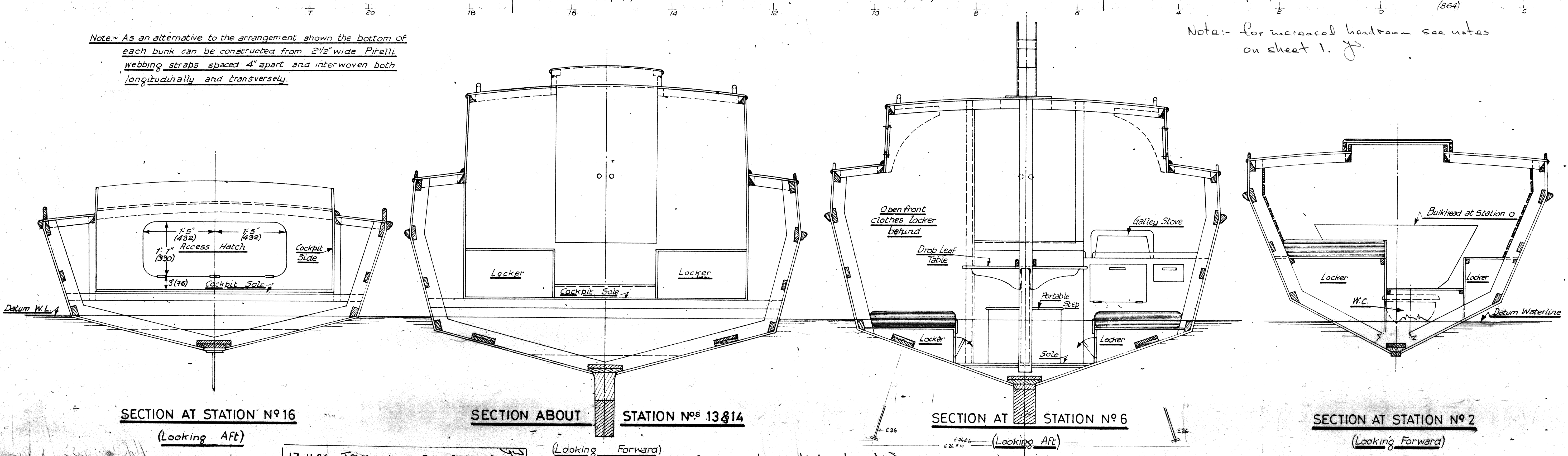


PROFILE RUDDER BLADE approx 2" wide and taper to trailing edge. Fastenings and fittings, either M.S. galv. or all bronze. S/S (1/2") pin for upper fastenings. Do Not use S/S beneath waterline.

Note: Engine Size 8-12 bhp. JS.

Note: As an alternative to the arrangement shown the bottom of each bunk can be constructed from 2 1/2" wide Pirrell webbing straps spaced 4" apart and interwoven both longitudinally and transversely.

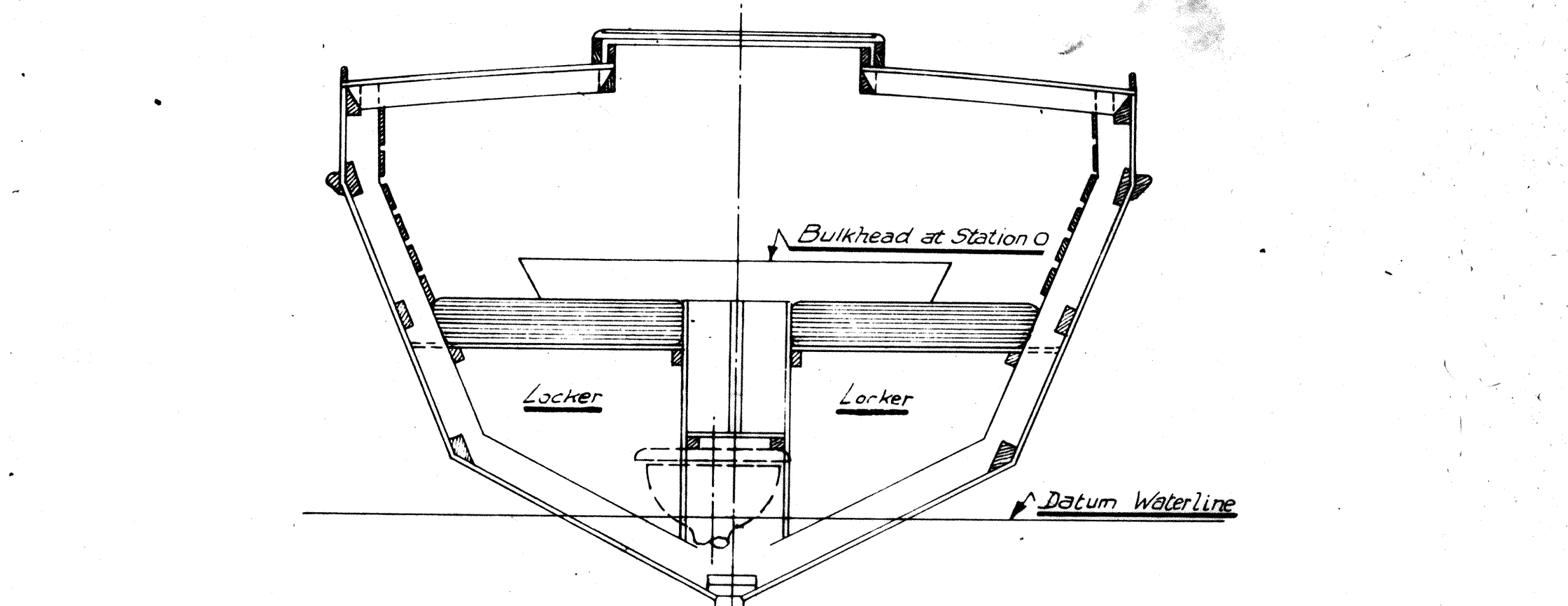
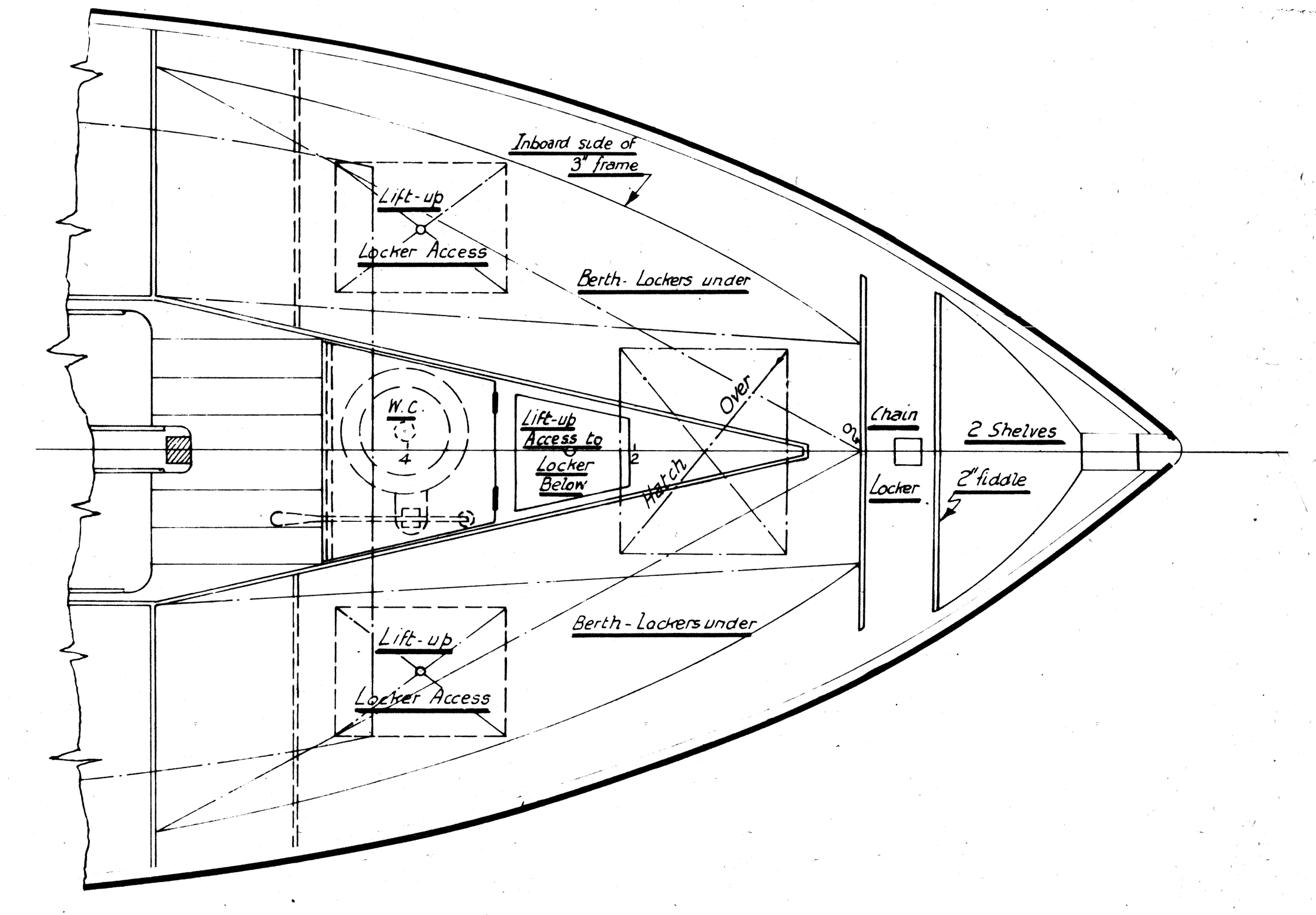
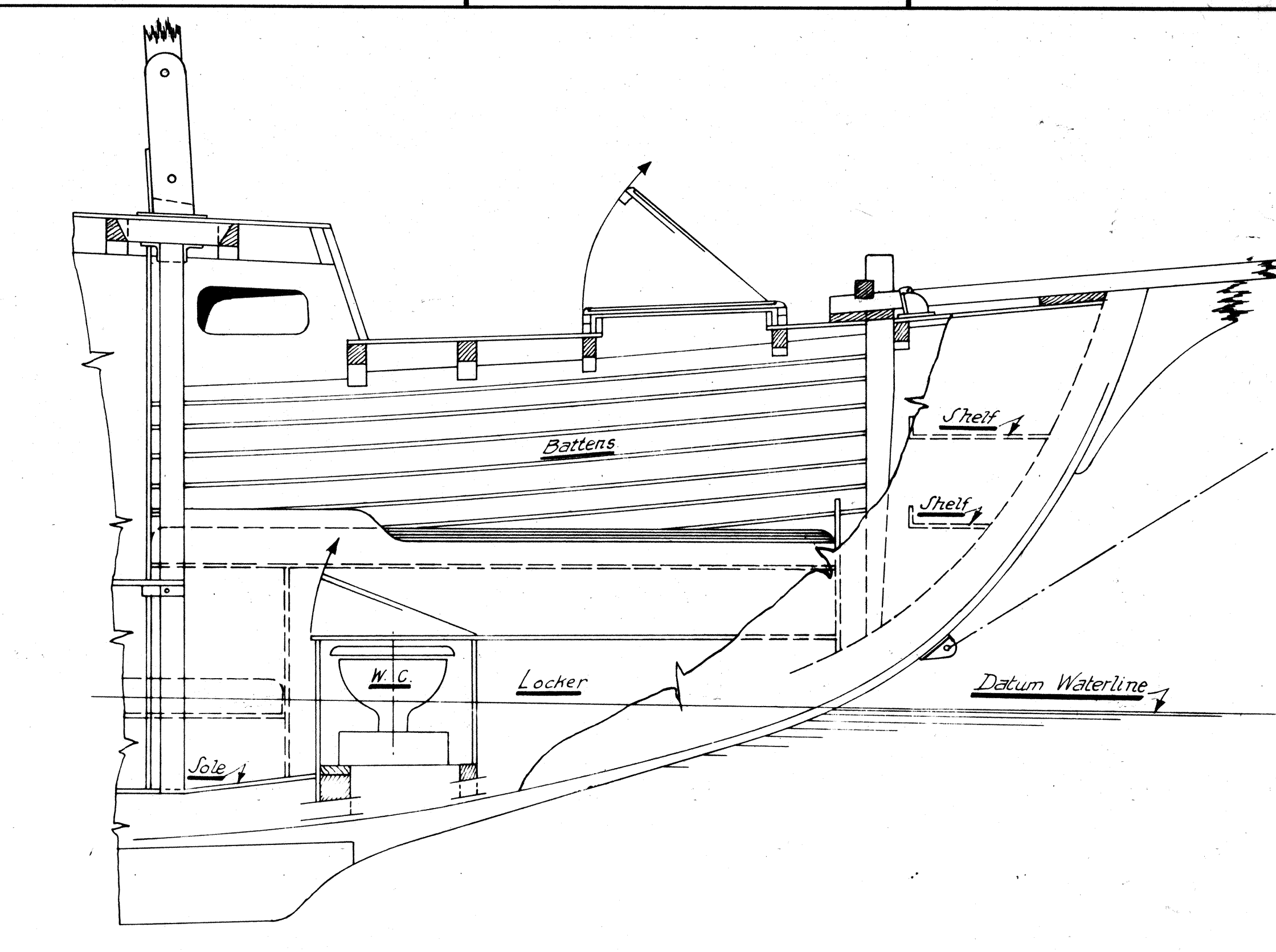


SECTION AT STATION N° 16 (Looking Aft)

SECTION ABOUT STATION N°s 13 & 14 (Looking Forward)

SECTION AT STATION N° 6 (Looking Aft)

SECTION AT STATION N° 2 (Looking Forward)



SECTION AT STATION N° 2 (Looking Forward)

ALTERNATIVE ARRANGEMENT OF FORECASTLE SHOWING TWO BERTHS

Note: For improved performance an extra 2" of deadwood can be fitted, lower ballast & coll. yes.

Note: For increased headroom see notes on sheet 1. JS