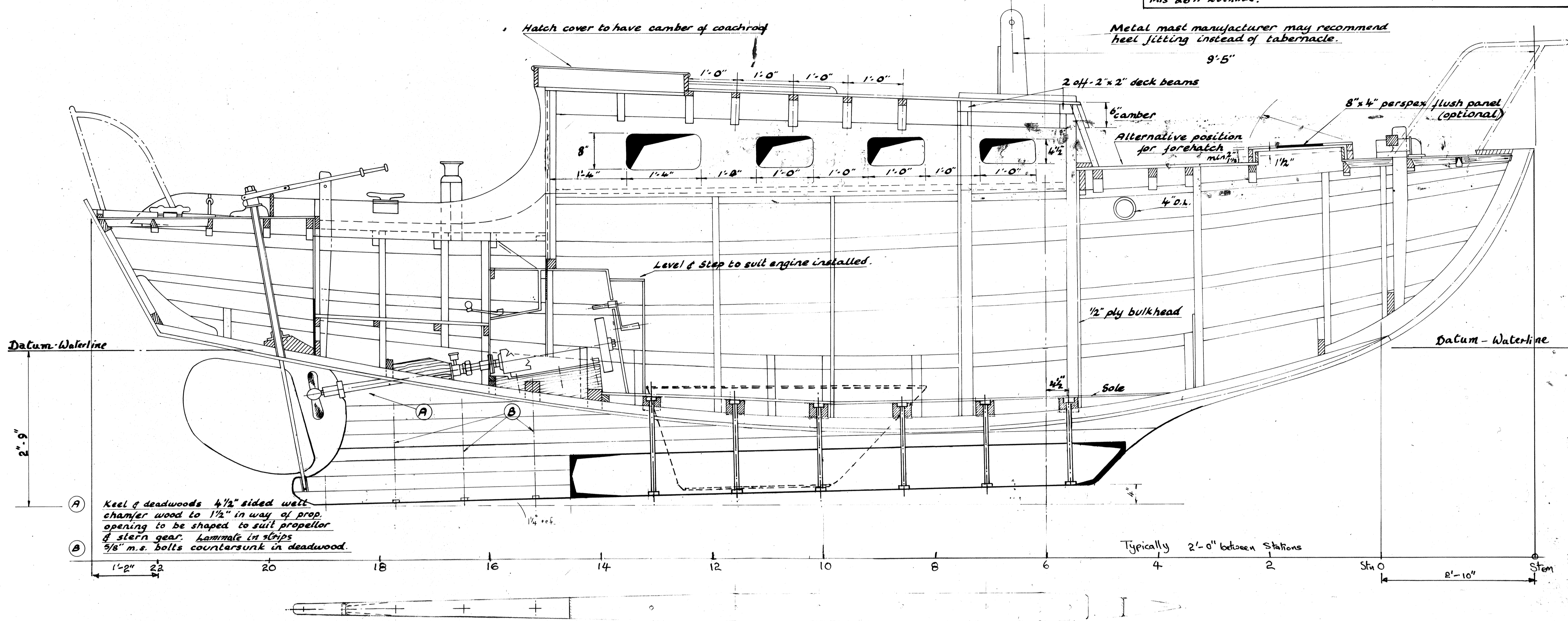
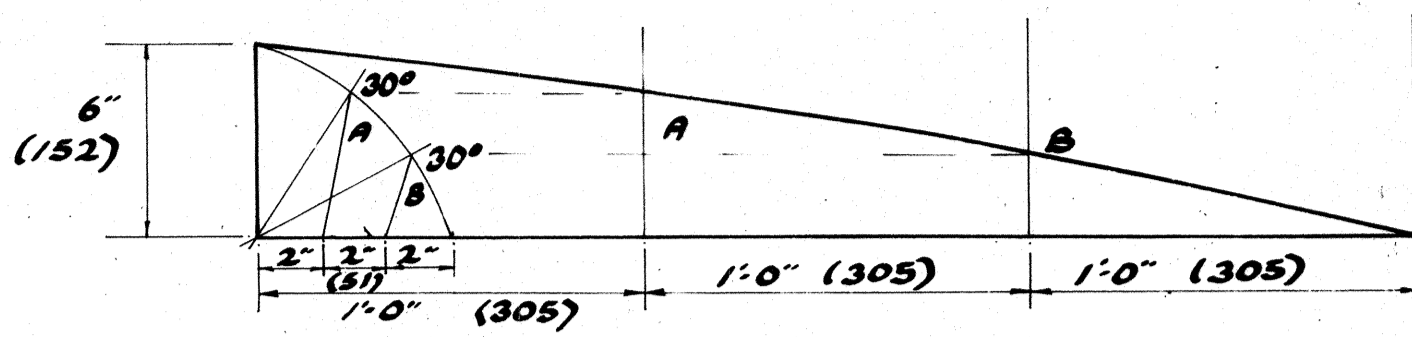


L.O.A.	26'-0"
L.W.L.	20'-0"
BEAM	8'-0"
DRAUGHT	2'-9"
KEELS (INSIDE BALLAST)	2 1850 lbs
DISPLACEMENT (CRUISING TRIM)	5600 lbs.
THAMES MEASUREMENT	6 tons

NOTE

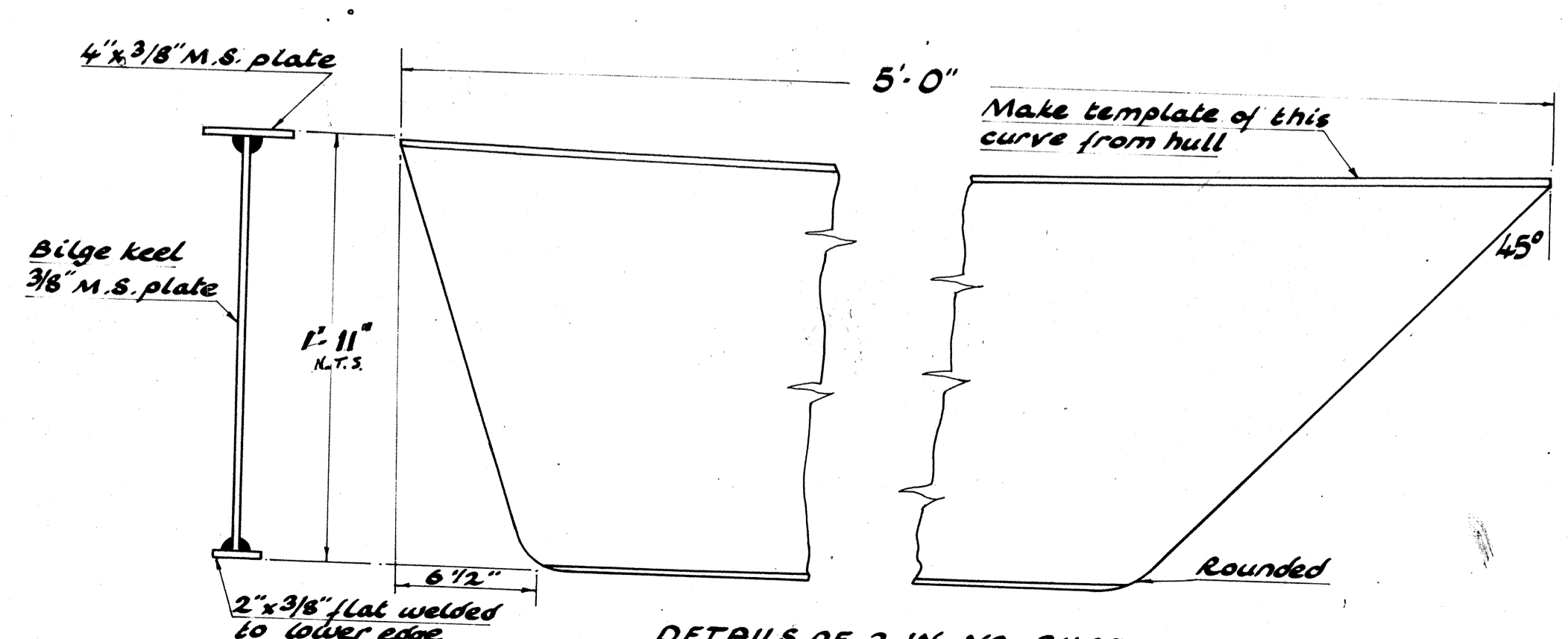
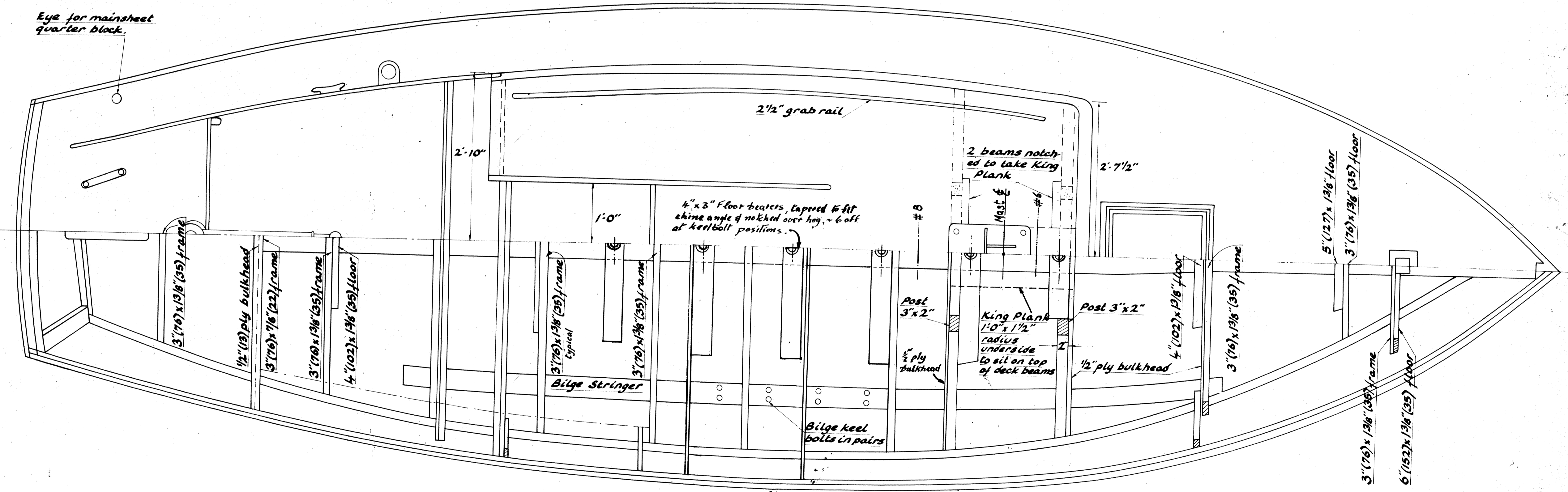
The Yachting Monthly 26 ft. Eventide has the same hull form as the 24 ft. Eventide but with 2 ft added to its length between stations 8 and 10, and with station numbers amended accordingly. The front of the cabin top, the mast, the bilge keel plates, and the size, weight, and position of the ballast keel, and the floor beam positions have all been adjusted to suit. Dimensions of the ballast keel and bilge keel plates are given on this sheet. Details of the C.I. bulb and plate keel and modifications for the transom hung rudder are shown on sheet 10. Sail and rigging plans are shown on sheet 9 for this 26 ft. Eventide.

Detail of Laying-off Camber of Coachroof
Scale 1:6

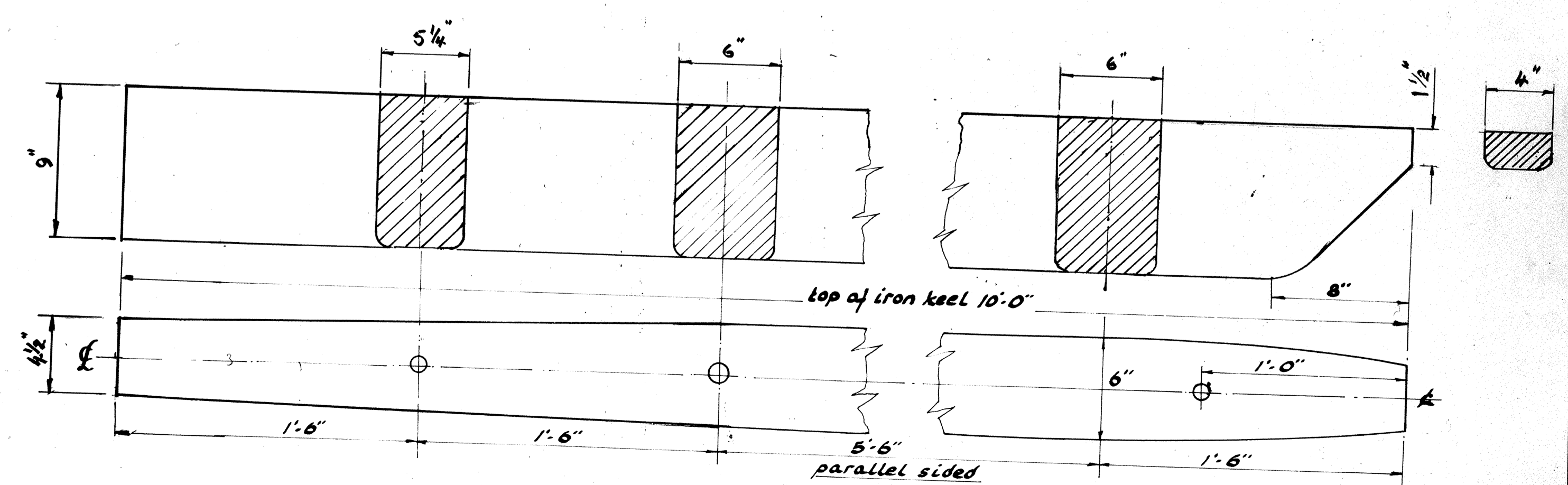


Keel & deadwoods 4 1/2" sided well chamfer wood to 1 1/2" in way of prop. opening to be shaped to suit propeller of stern gear. Lammale in strips 3/8" m.s. bolts countersunk in deadwood.

Eye for mainsheet quarter block



DETAILS OF 2 IN NO. BILGE KEELS
(for method of fastening see sheet 10)



DETAILS OF CAST IRON KEEL FOR 26' EVENTIDE
6 holes 3/8" dia, csk 2" dia x 1", for 3/8" dia M.S. keel bolts
Keel weight approx. 1600 lbs.

Nov 53. Amend Ballast keel & hull position shown & scale 1/4" dia, csk 2" dia x 1", for 3/8" dia M.S. keel bolts. Keel weight approx. 1600 lbs. Scale 2" = 1'-0".