

BERMUDA RIG. 100#

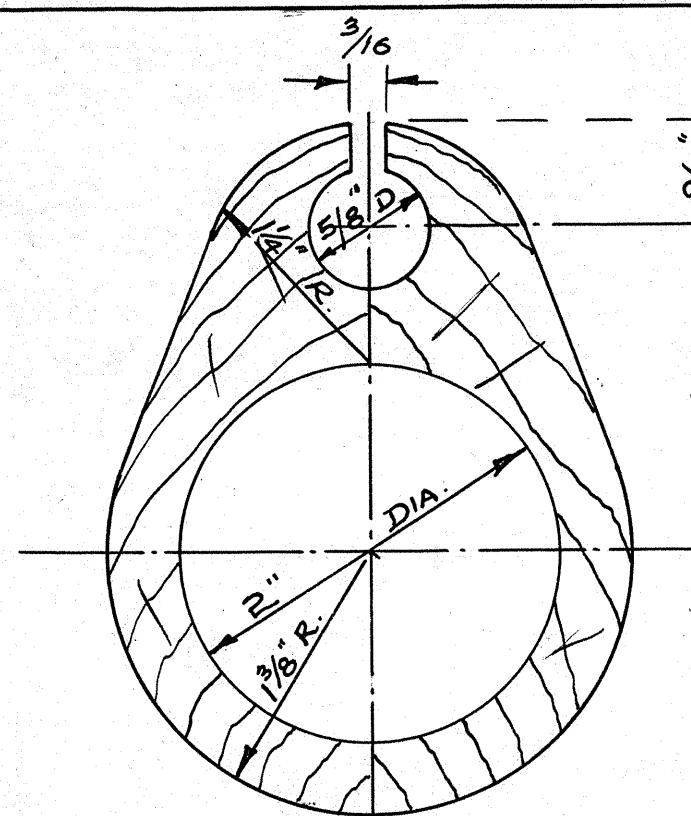
SAILS.								
SAIL.	LUFF.	LEECH	FOOT.	DIAG.	AREA.	CUT.	CROSS	MATERIAL.
MAIN.	18'-3"	19'-1"	7'-10"	7'-10"	71.5	MITRE.	4 OZ. COTTON.	
JIB.	12'-6"	10'-9"	5'-6"	4'-8"	28.5	MITRE.	4 OZ. COTTON.	

RUNNING RIGGING.				
ITEM.	Nº	LENGTH	CIRC.	MATERIAL & ENDS.
MAIN HALYARD.	1.	40'	3/4"	ITALIAN HEMP. 1-HARD EYE.
JIB "	1.	28'	3/4"	" " 1-HARD EYE.
MAINSHEET.	1.	35'	1"	COTTON. 1-HARD EYE.
JIB SHEETS.	1.	30'	1 1/4"	" WHIP BOTH ENDS.
C-P TACKLE.	1.	25'	1 1/4"	" 1-HARD EYE.

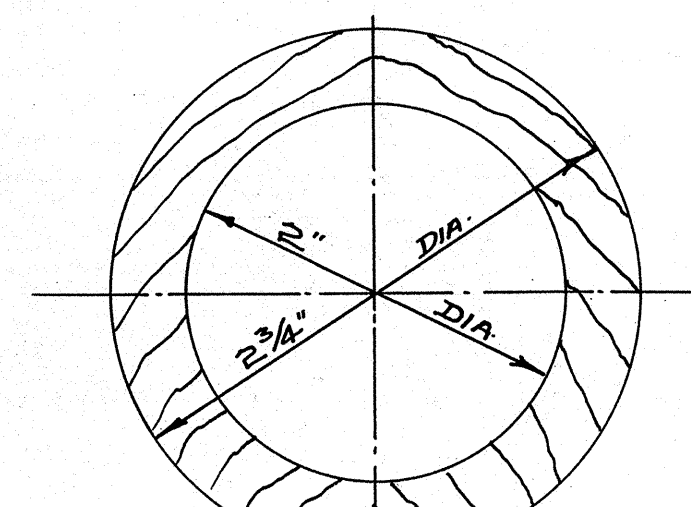
STANDING RIGGING.				
ITEM.	Nº	LENGTH	CIRC.	MATERIAL & ENDS.
SHROUDS.	2.	14'-9"	1/2"	6 X 7 G.S.W.R. 2-HARD EYES.
FORESTAY.	1.	13'-5"	1/2"	6 X 7 G.S.W.R. 2-HARD EYES.

BLOCKS & LEADS.				
ITEM.	Nº	TYPE.	SIZE.	MATERIAL & MAKE.
MAINSHEET.	1.	SINGLE.	DINGHY.	FORK & PIN IN LINE. NO BECKET. TUFNOL.
"	1.	"	"	SWIVEL EYE. BECKET. TUFNOL.
JIB SHEETS.	2.	BOLT THRO.	5/8"	TUFNOL FAIRLEADS.
C-P TACKLE.	1.	SINGLE.	A.	OVAL EYE IN LINE. BECKET. TUFNOL.
C-P TACKLE.	1.	"	"	OVAL EYE IN LINE. NO BECKET. TUFNOL.
MAIN HALYARD.	2.	"	1 1/2" X 3/8"	BRASS OR TUFNOL SHEAVE.
JIB "	2.	"	"	" " " "

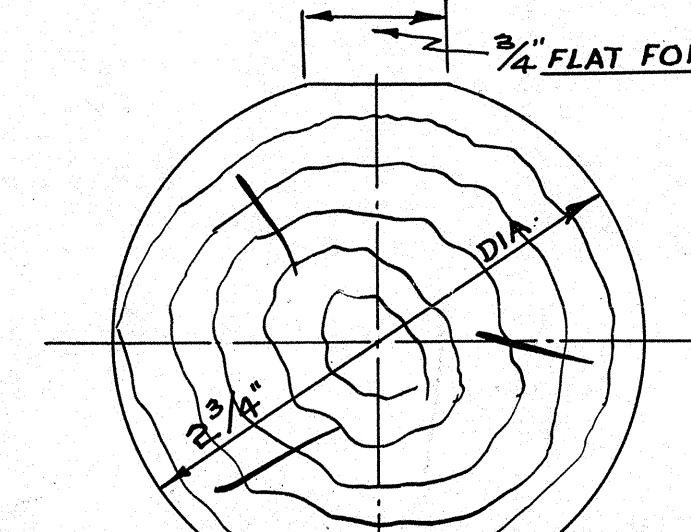
NOTES. LUFF & FOOT OF MAINSAIL TO BE ROPED FOR 1/2" SPAR GROOVE. LUFF OF JIB TO BE WIRE. SNAP HANKS TO BE FITTED.  
1/4" BOTTLE SCREW TO FORESTAY ON LY.



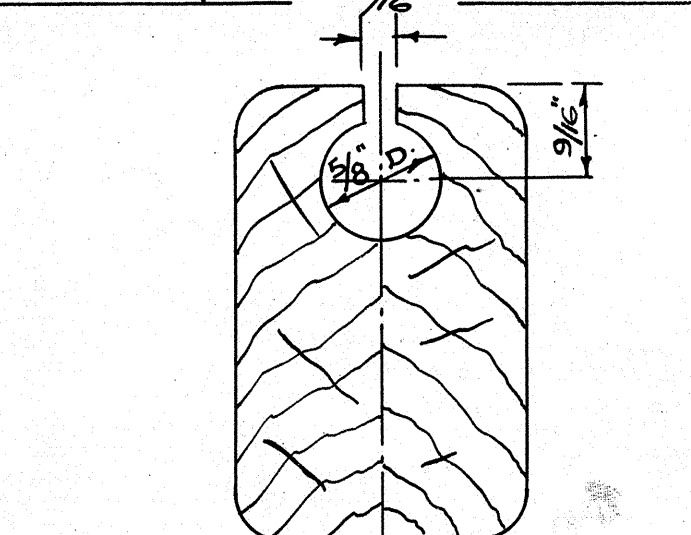
SECTION OF BERMUDA MAST FROM 3'-3" TO 13'-9" THEN REDUCING TO 2" X 1 1/2" AT HEAD.



SECTION OF BERMUDA MAST FROM 6" TO 3'-3" THEN REDUCING TO 2" X 1 1/2" AT HEAD.



SECTION OF GUNTER MAST FROM 6" TO 9'-0" THEN REDUCING TO 2" DIA AT HEAD.



SECTION IN CENTRE OF BOOM.

NOTE. ALL TAPER TO BE TAKEN OFF FORE EDGE AND SIDES OF SPARS. AFT EDGE IN ALL CASES TO BE STRAIGHT.

SPAR SECTIONS.  
SCALE 1=1.

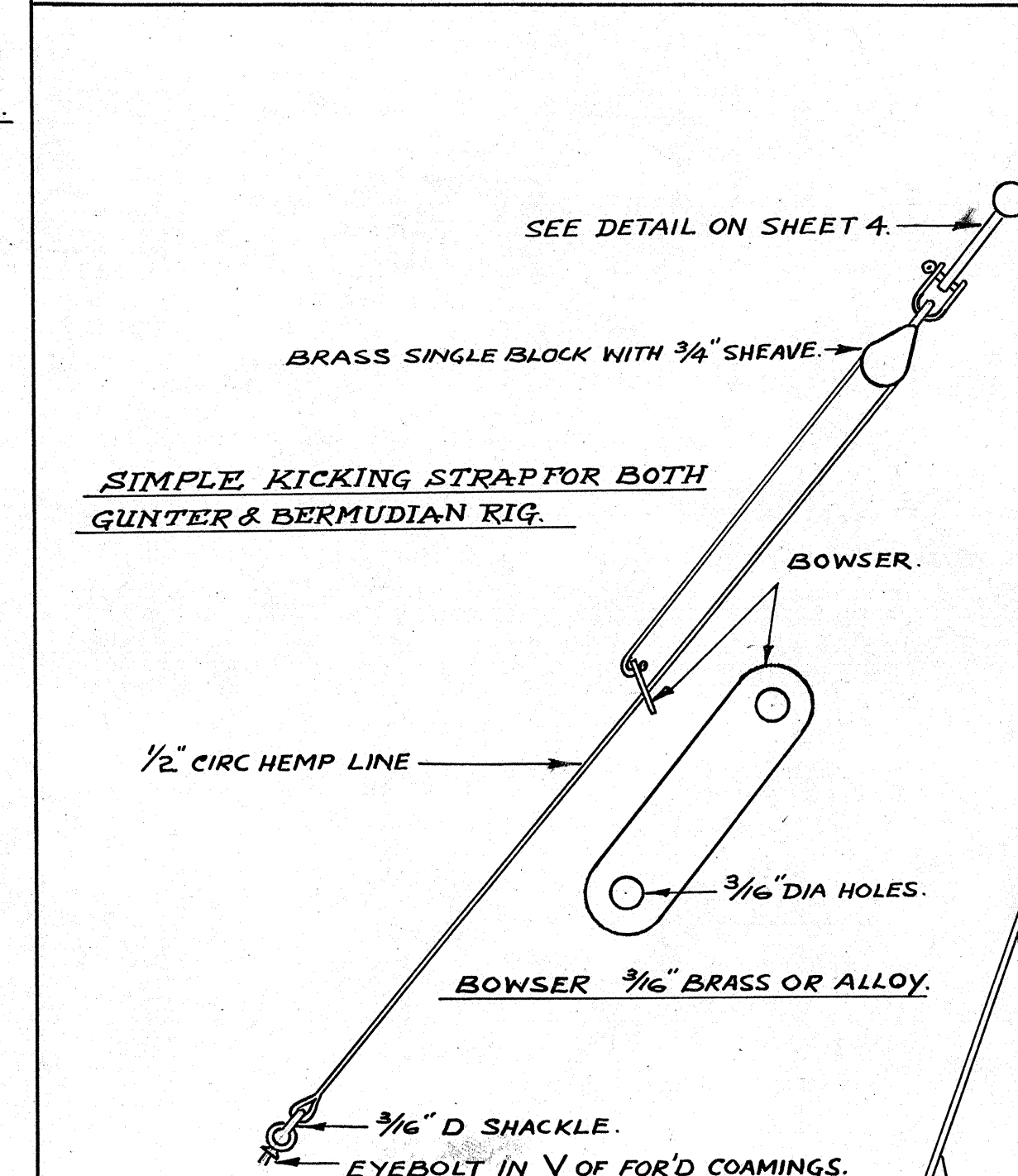
SAILS.									
SAIL.	LUFF.	LEECH	HEAD	FOOT	DIAG.	CUT	AREA.	CROSS	MATERIAL.
MAIN.	7'-4"	19'-0"	10'-11"	7'-10"	10'-2"	MITRE.	71.5	4 OZ. COTTON.	
JIB.	12'-6"	10'-9"	5'-6"	4'-8"	28.5	MITRE.	28.5	4 OZ. COTTON.	

RUNNING RIGGING.				
ITEM.	Nº	LENGTH	CIRC.	MATERIAL & ENDS.
MAIN HALYARD.	1.	36'-0"	1"	ITALIAN HEMP. 1-HARD EYE.
JIB HALYARD.	1.	30'	1"	" " 1-HARD EYE.
MAINSHEET.	1.	35'	1"	COTTON. 1-HARD EYE.
JIB SHEETS.	1.	30'	1 1/4"	" WHIP BOTH ENDS.
C.P. TACKLE.	1.	25'	1 1/4"	" 1-HARD EYE.

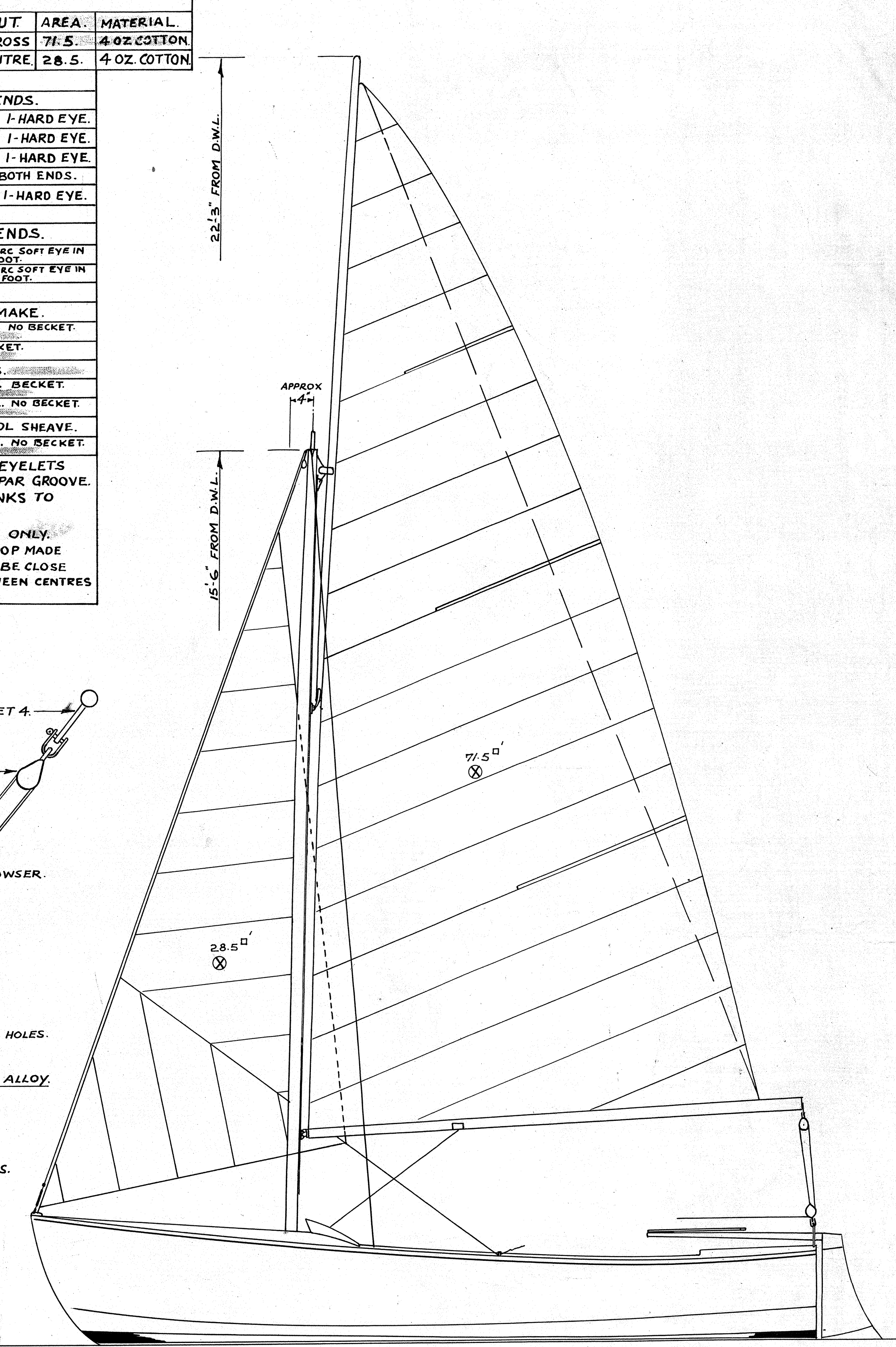
STANDING RIGGING.				
ITEM.	Nº	LENGTH	CIRC.	MATERIAL & ENDS.
SHROUDS.	2.	14'-6"	1/2"	6 X 7 G.S.W.R. 4-CIRC SOFT EYE IN HEAD. HARD EYE IN FOOT.
FORESTAY.	1.	13'-5"	1/2"	6 X 7 G.S.W.R. 4-CIRC SOFT EYE IN HEAD. HARD EYE IN FOOT.

BLOCKS & LEADS.				
ITEM.	Nº	TYPE.	SIZE.	MATERIAL & MAKE.
MAINSHEET.	1.	SINGLE.	DINGHY.	FORK & PIN IN LINE. NO BECKET. TUFNOL.
MAINSHEET.	1.	"	"	SWIVEL EYE. BECKET. TUFNOL.
JIB SHEETS.	2.	BOLT THRO.	5/8"	TUFNOL FAIRLEADS.
C-P TACKLE.	1.	SINGLE.	A.	OVAL EYE IN LINE. BECKET. TUFNOL.
C-P TACKLE.	1.	"	"	OVAL EYE IN LINE. NO BECKET. TUFNOL.
MAIN HALYARD.	1.	"	2" X 1/2"	BRASS OR TUFNOL SHEAVE.
JIB HALYARD.	1.	"	A.	OVAL EYE IN LINE. NO BECKET. TUFNOL.

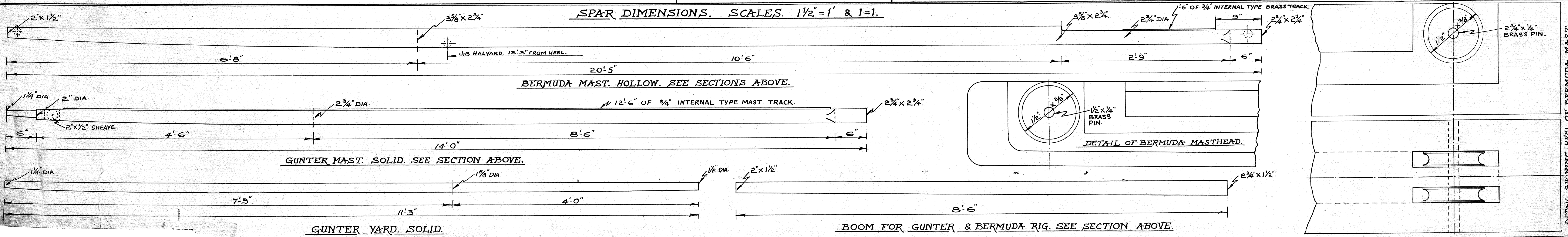
NOTES. LUFF & HEAD OF MAINSAIL TO HAVE EYELETS FOR LACING. FOOT ROPED FOR 1/2" SPAR GROOVE. LUFF OF JIB TO BE WIRE. SNAP HANKS TO BE FITTED.  
1/4" BOTTLE SCREW TO FORESTAY ONLY. RIG BLOCK FOR JIB HALYARD ON STROP MADE FROM 1/2" CIRC G X 19 WIRE. STROP TO BE CLOSE FIT OVER MASTHEAD. DISTANCE BETWEEN CENTRES OF EYES 9".



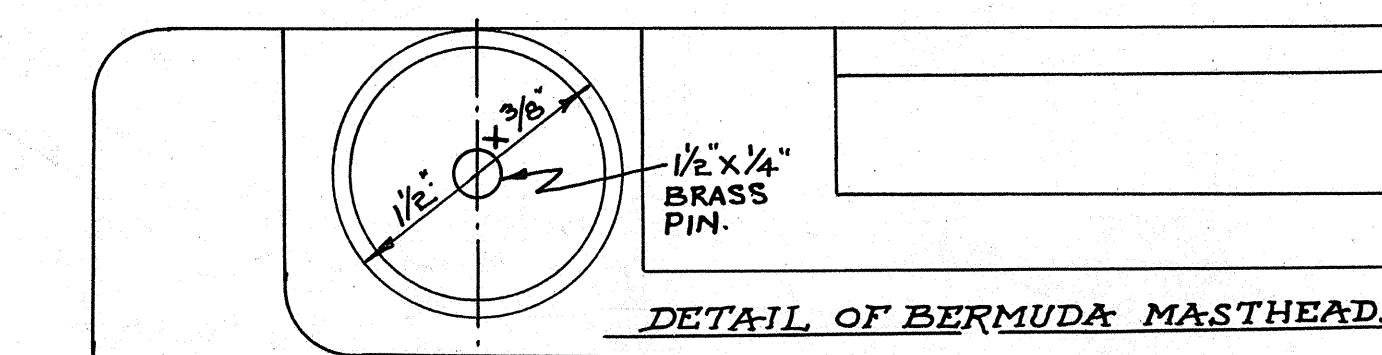
SIMPLE KICKING STRAP FOR BOTH GUNTER & BERMUDIAN RIG.



GUNTER RIG. 100#



SPAR DIMENSIONS. SCALES. 1 1/2" = 1' & 1 = 1.



DETAIL OF BERMUDA MASTHEAD.

DETAIL SHOWING HEAD OF BERMUDA MAST SHOWING POSITION OF HALYARD SHEAVES.