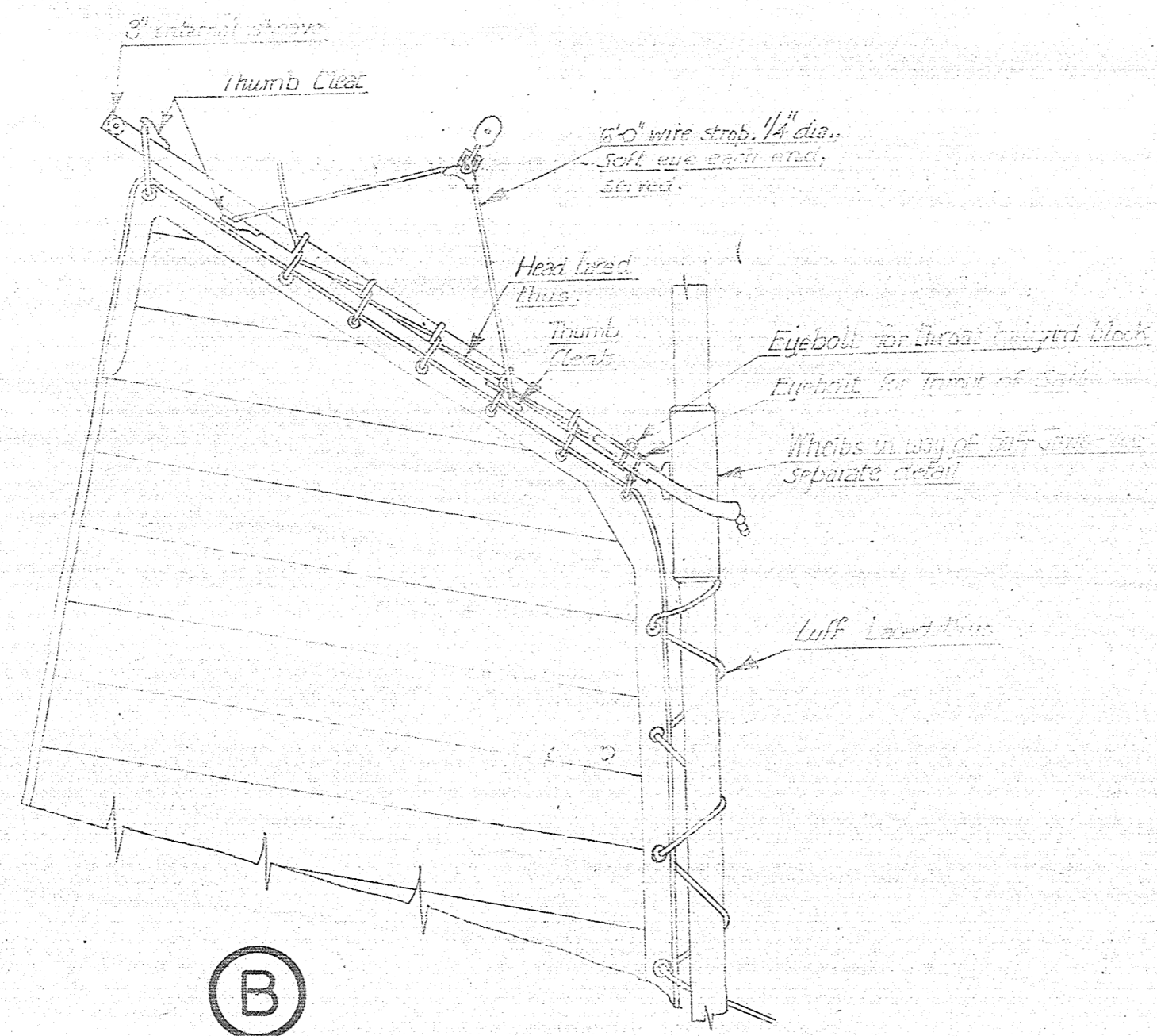
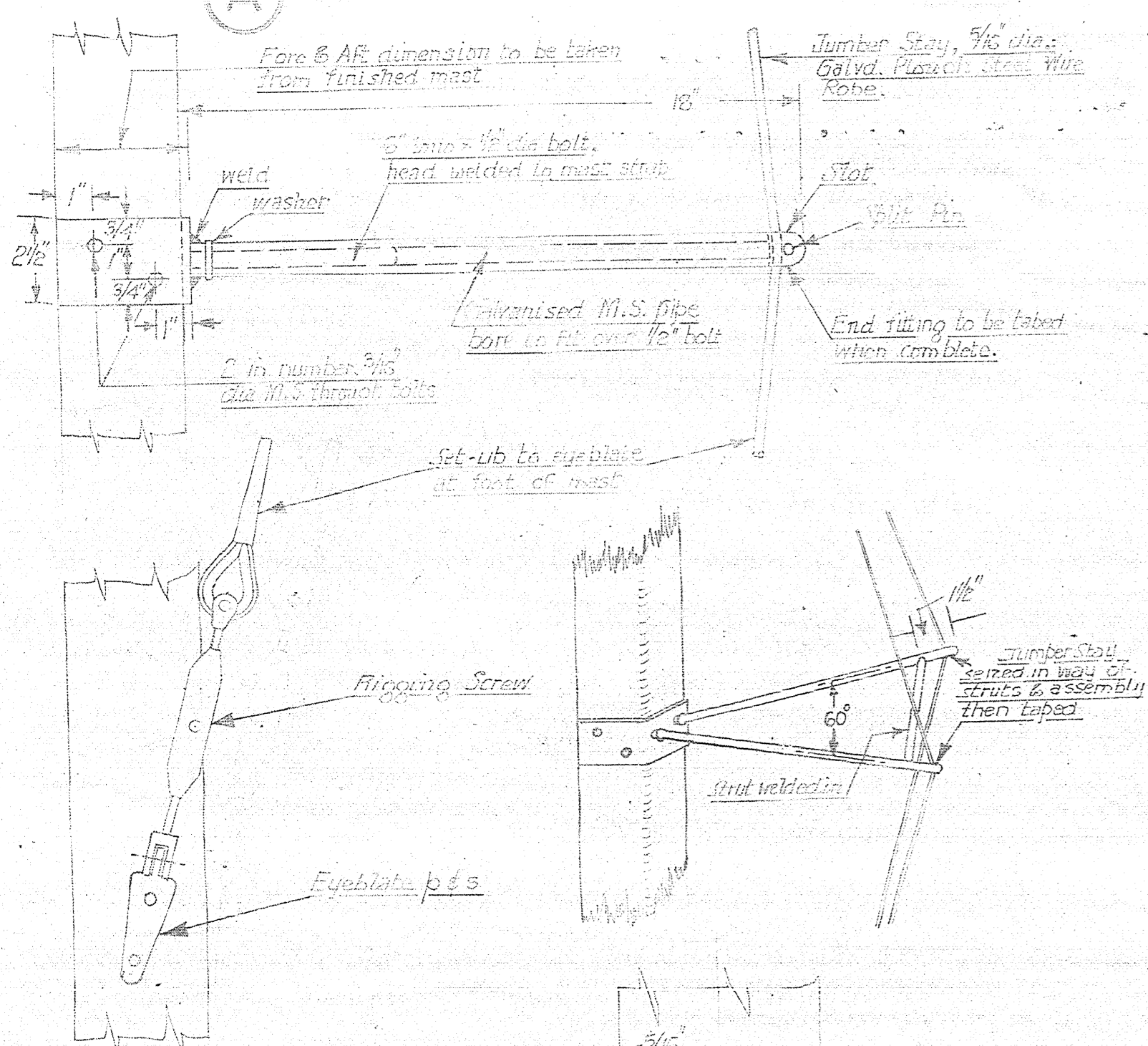
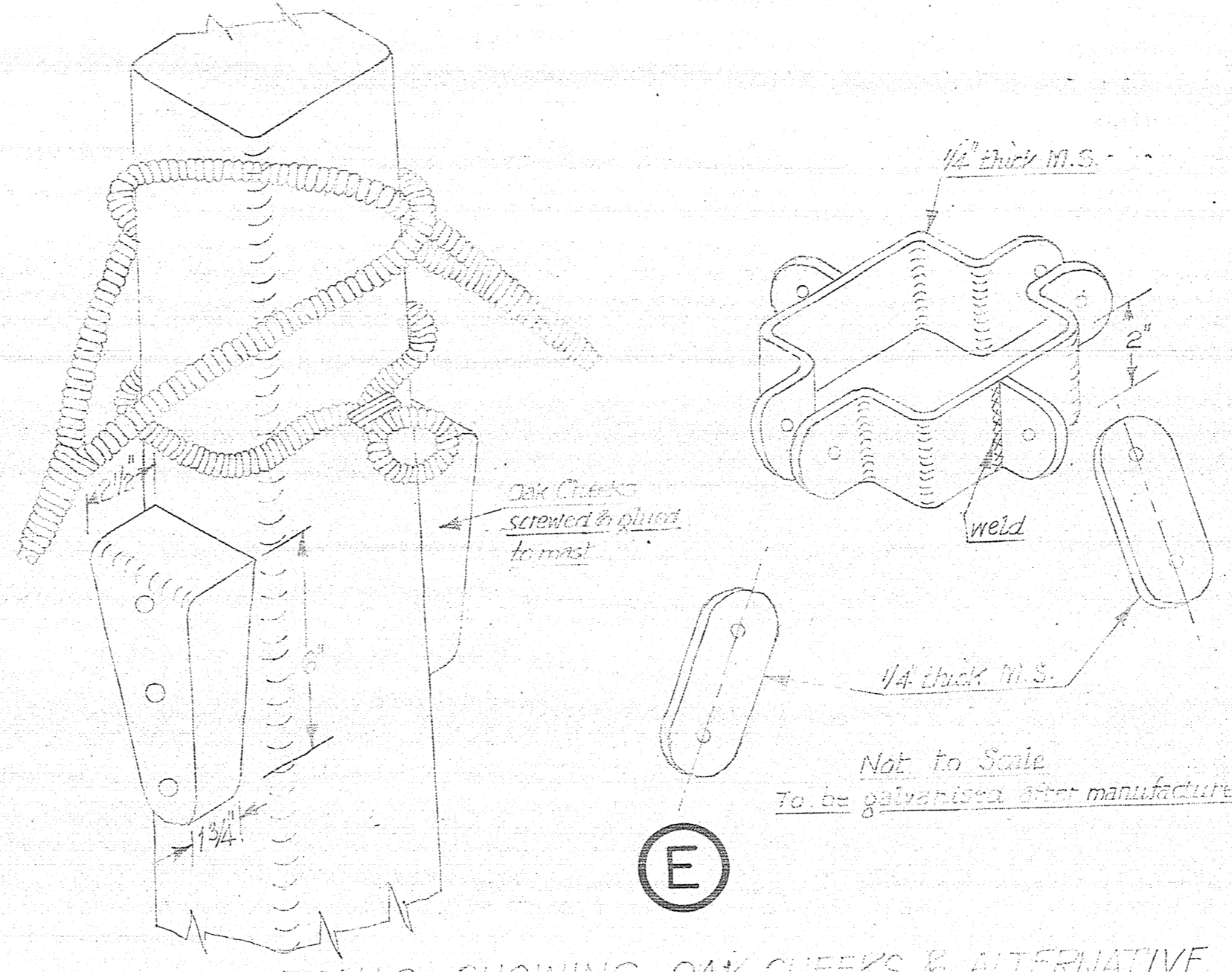


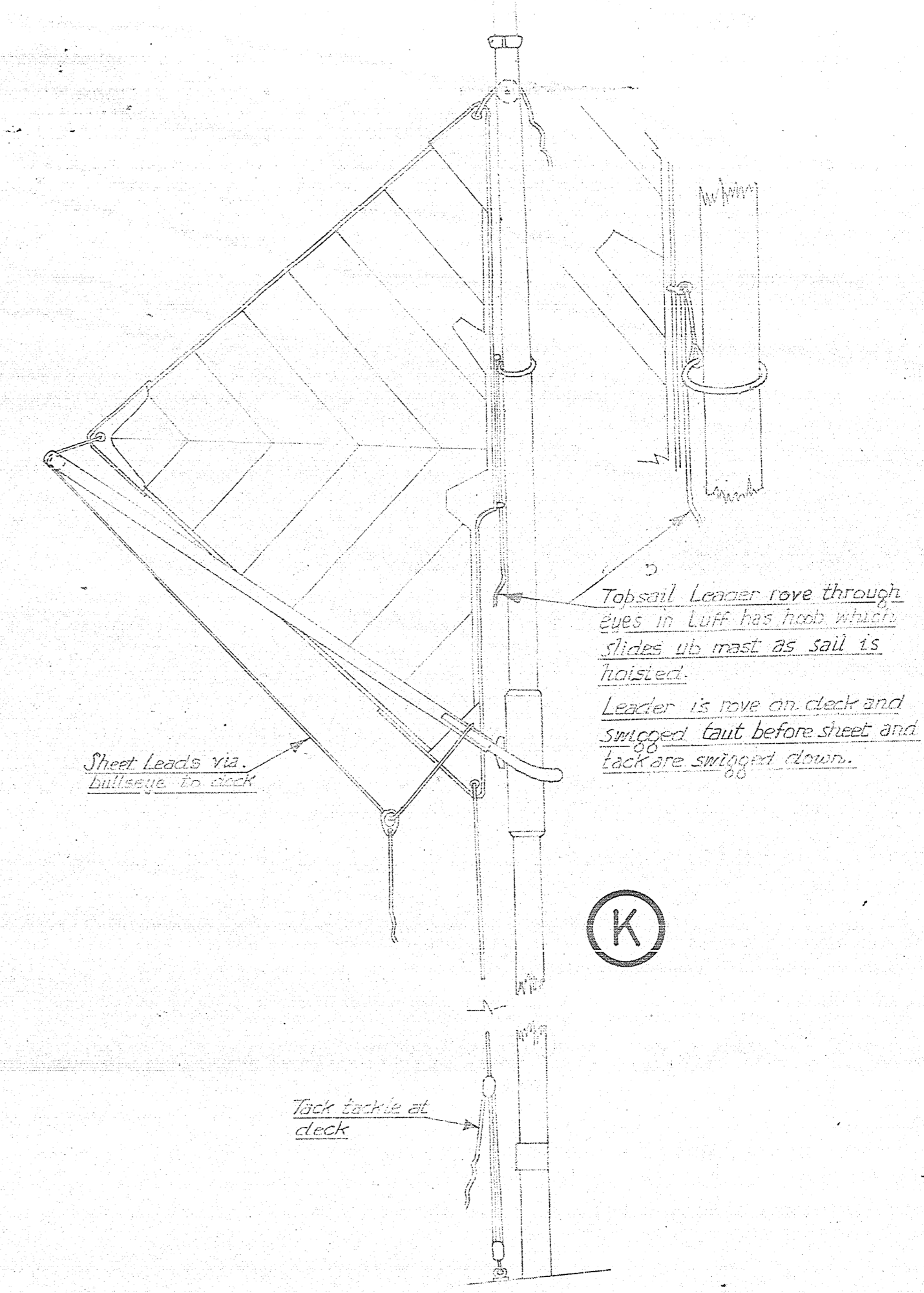
A DETAILS OF JUMPER STRUTS



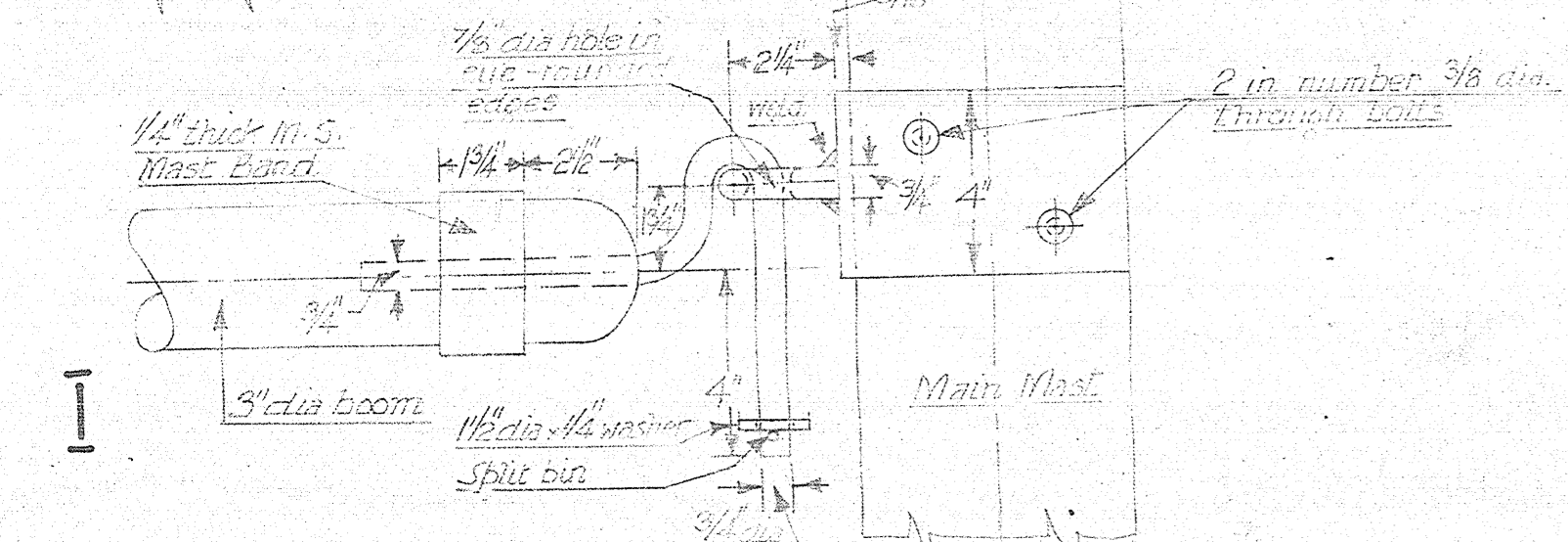
B DETAIL SHOWING MAINSAIL LACING TO SAFETY MOUNT SET SYSTEM APPROX 1/2" = 1 FOOT



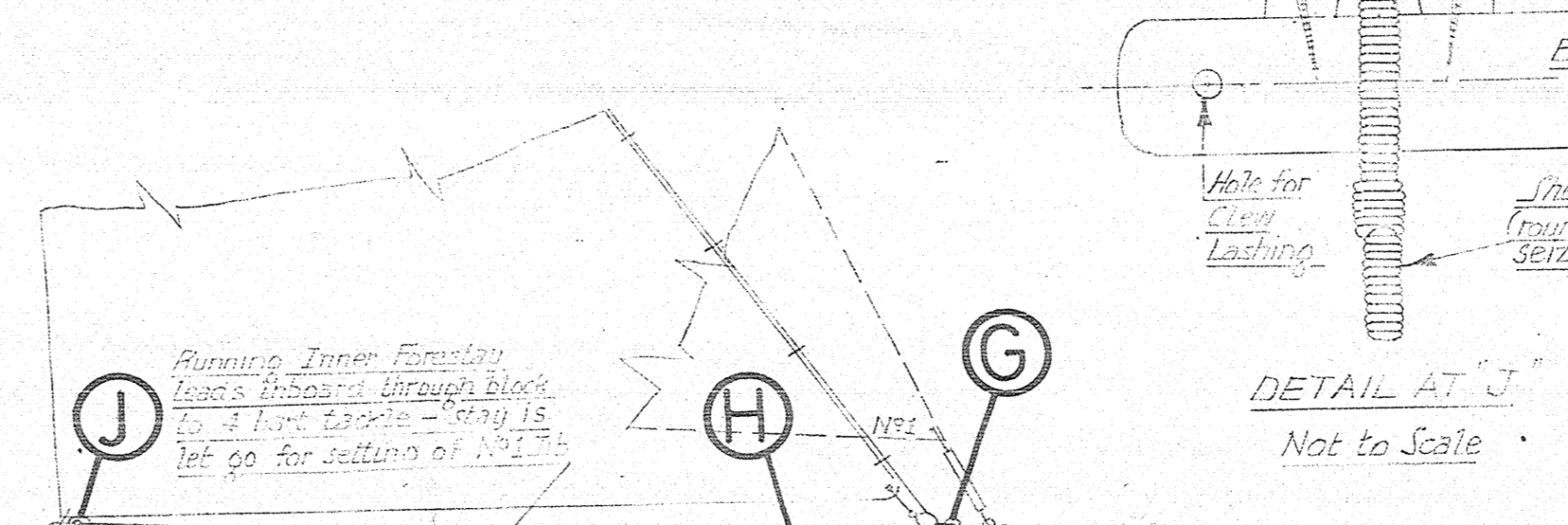
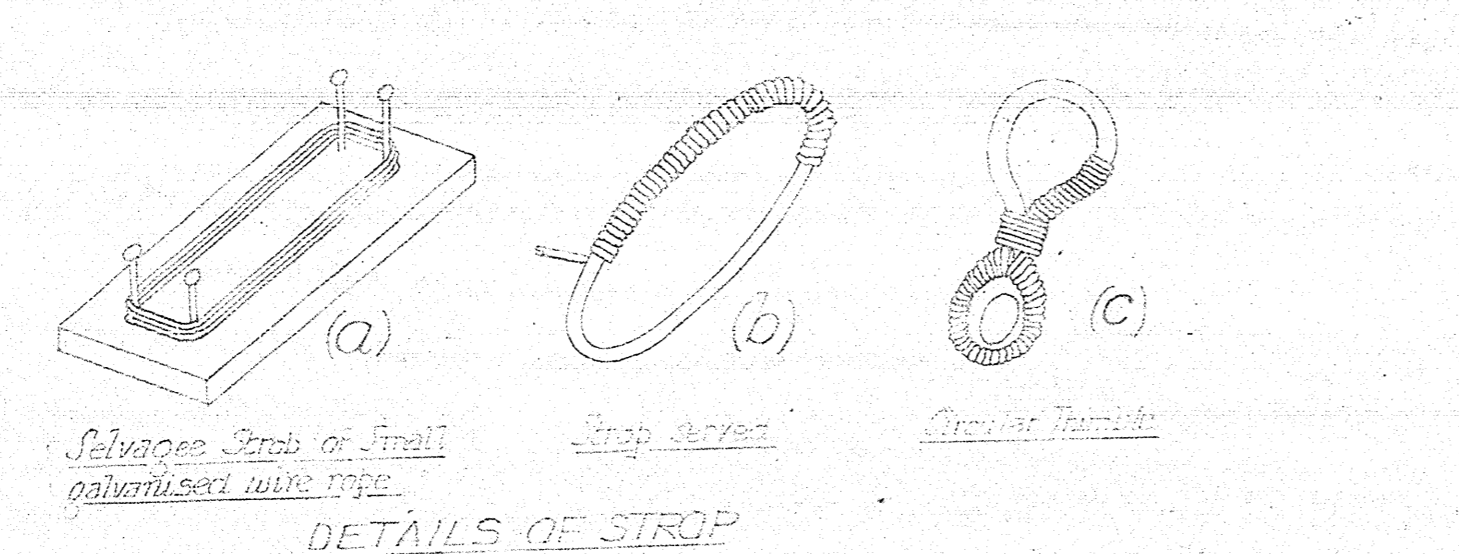
E DETAILS SHOWING OAK CHEEKS & ALTERNATIVE MAST BANDS Not to Scale



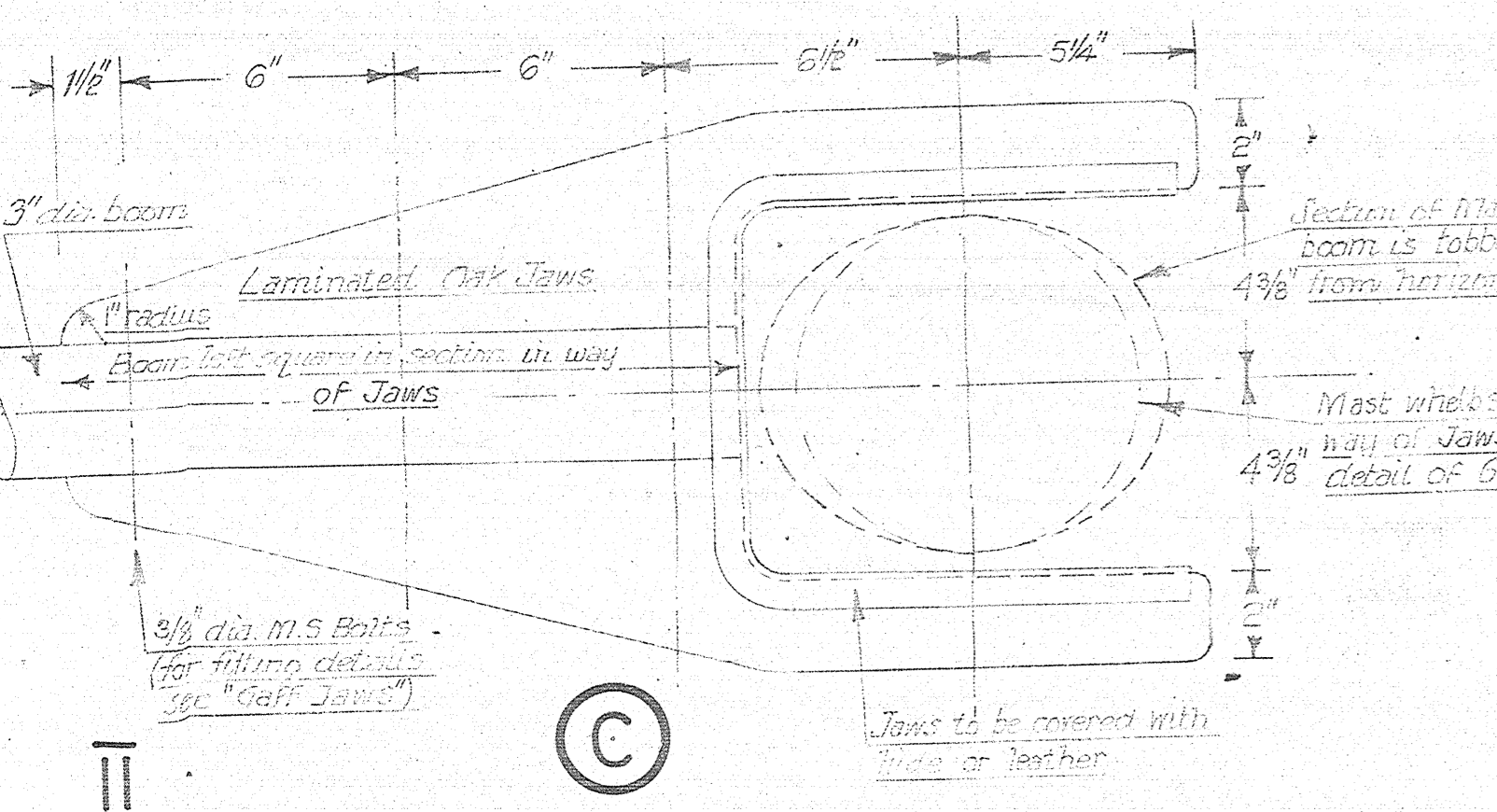
K DETAILS OF TOPSAIL Scale: 1/2" = 1 foot



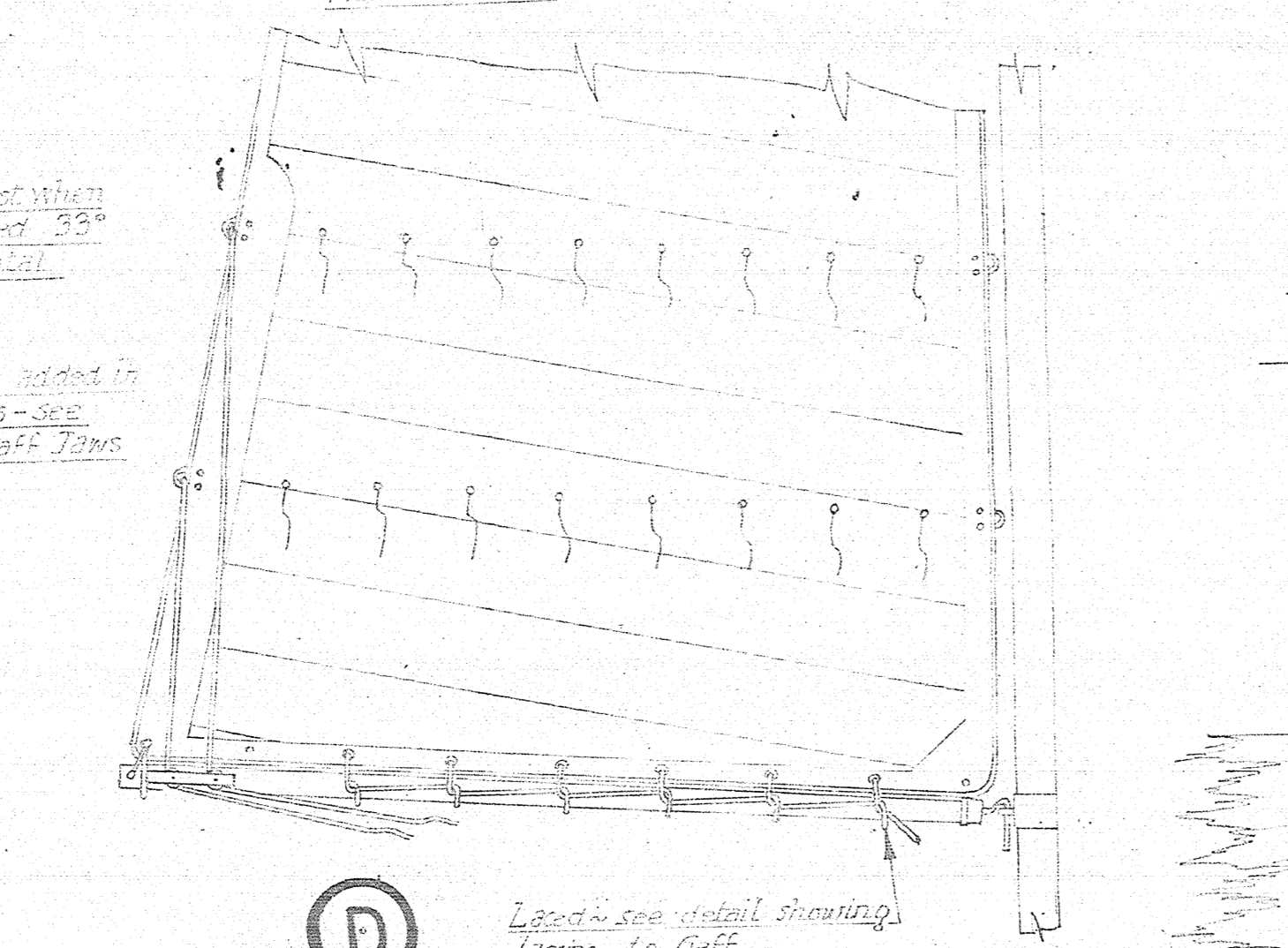
I DETAILS SHOWING CROSSNECK ALTERNATIVES Scale: 3" = 1 foot



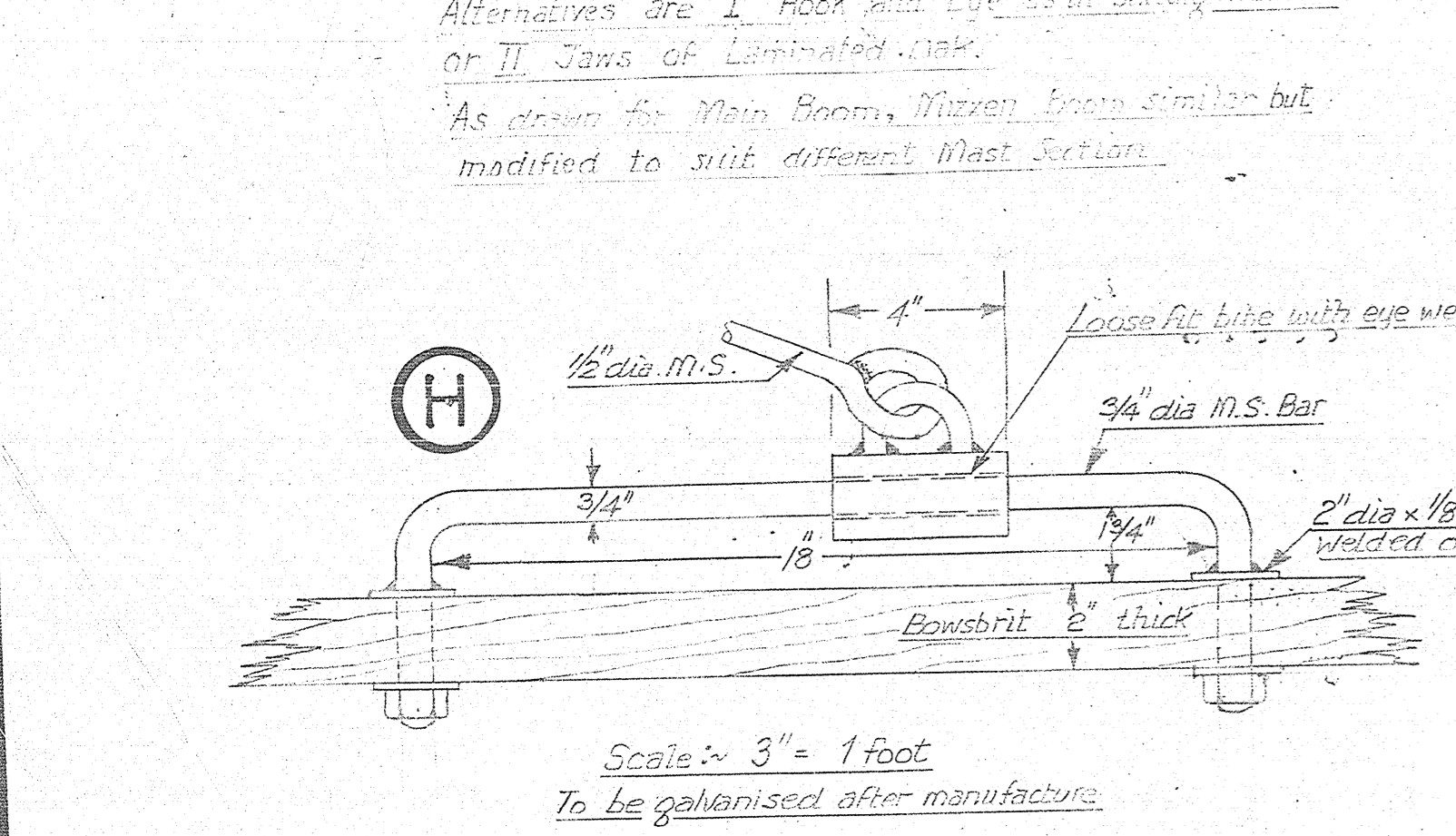
F DETAILS OF BOWSPRIT EYEBOLT TO TAKE RUNNING FORESTAY Scale: Full Size



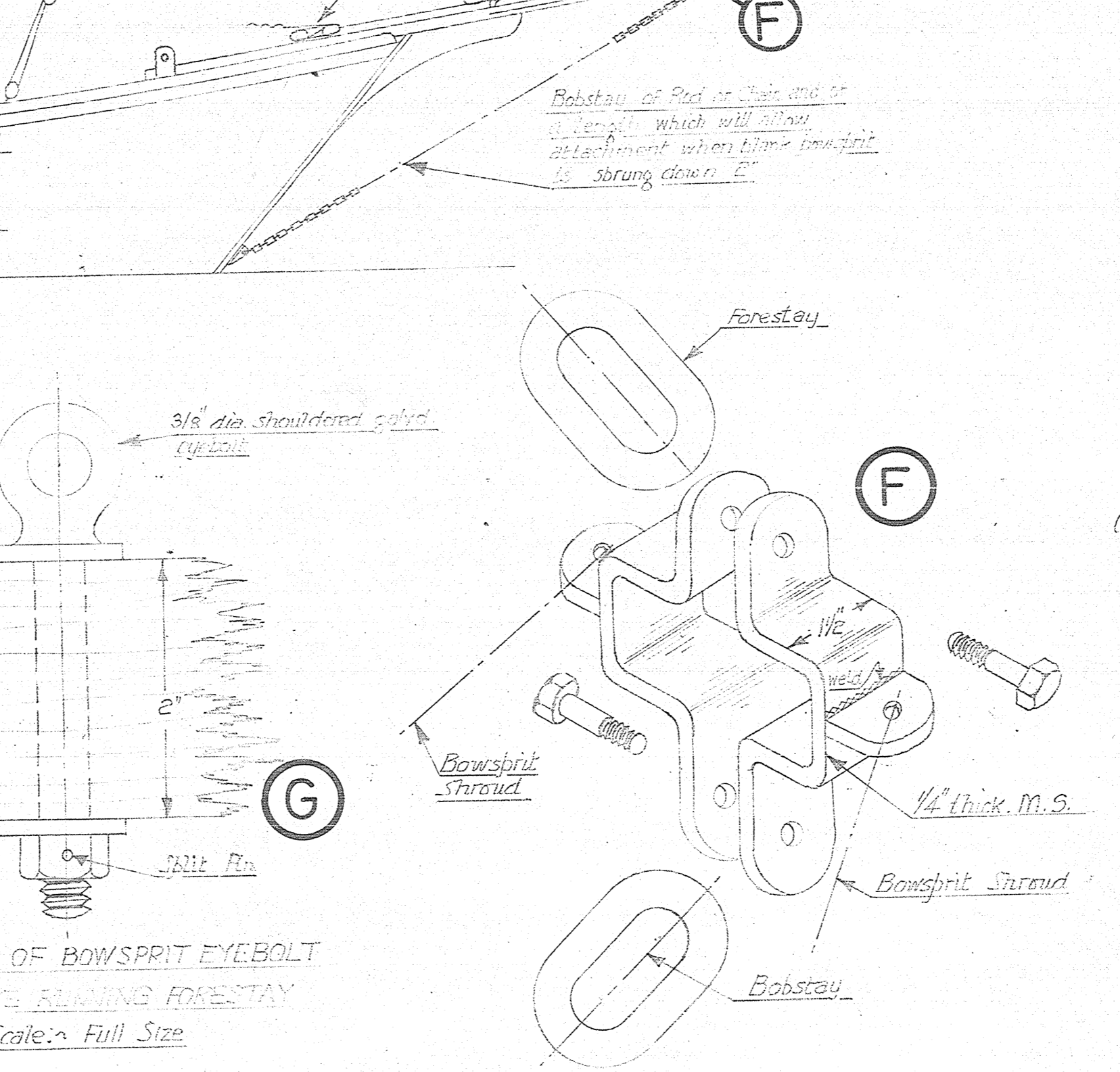
C DETAILS SHOWING CROSSNECK ALTERNATIVES Scale: 3" = 1 foot



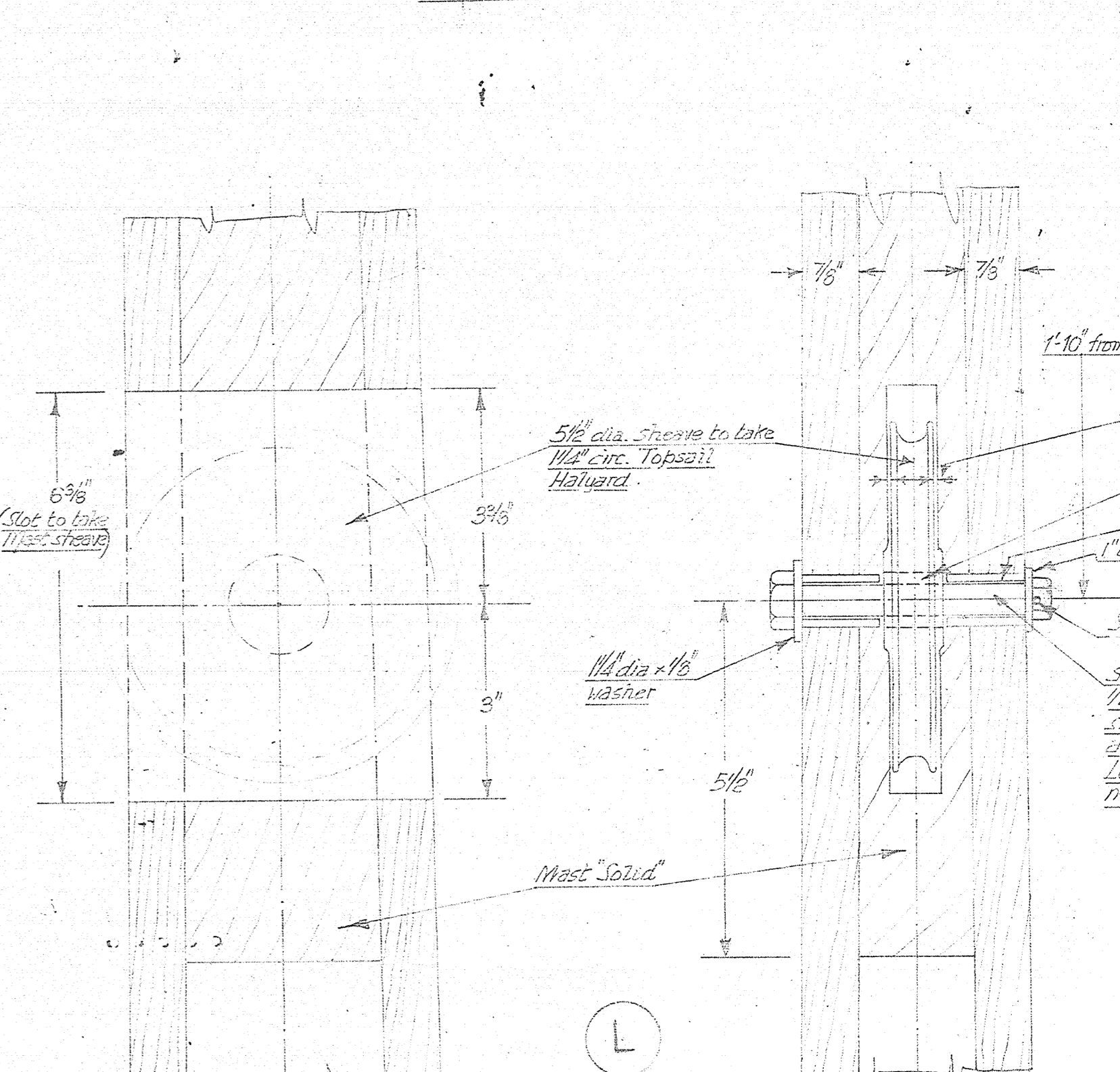
D DETAILS OF MAIN & MIZZEN BOOM BLOCK Note: Mizzen Boom See Block above 2' 6" long. Scale: 1/2" = 1 Foot



H DETAILS OF CRANE IRON To be galvanised after manufacture Not to Scale



F DETAILS OF CRANE IRON To be galvanised after manufacture Not to Scale



L DETAILS OF TOPSAIL HALYARD SHEAVE Scale: 1/2" = Full Size Note: Mizzen Halyard Sheave similar but to accord with Mizzen Mast dimensions and to be 4" diameter