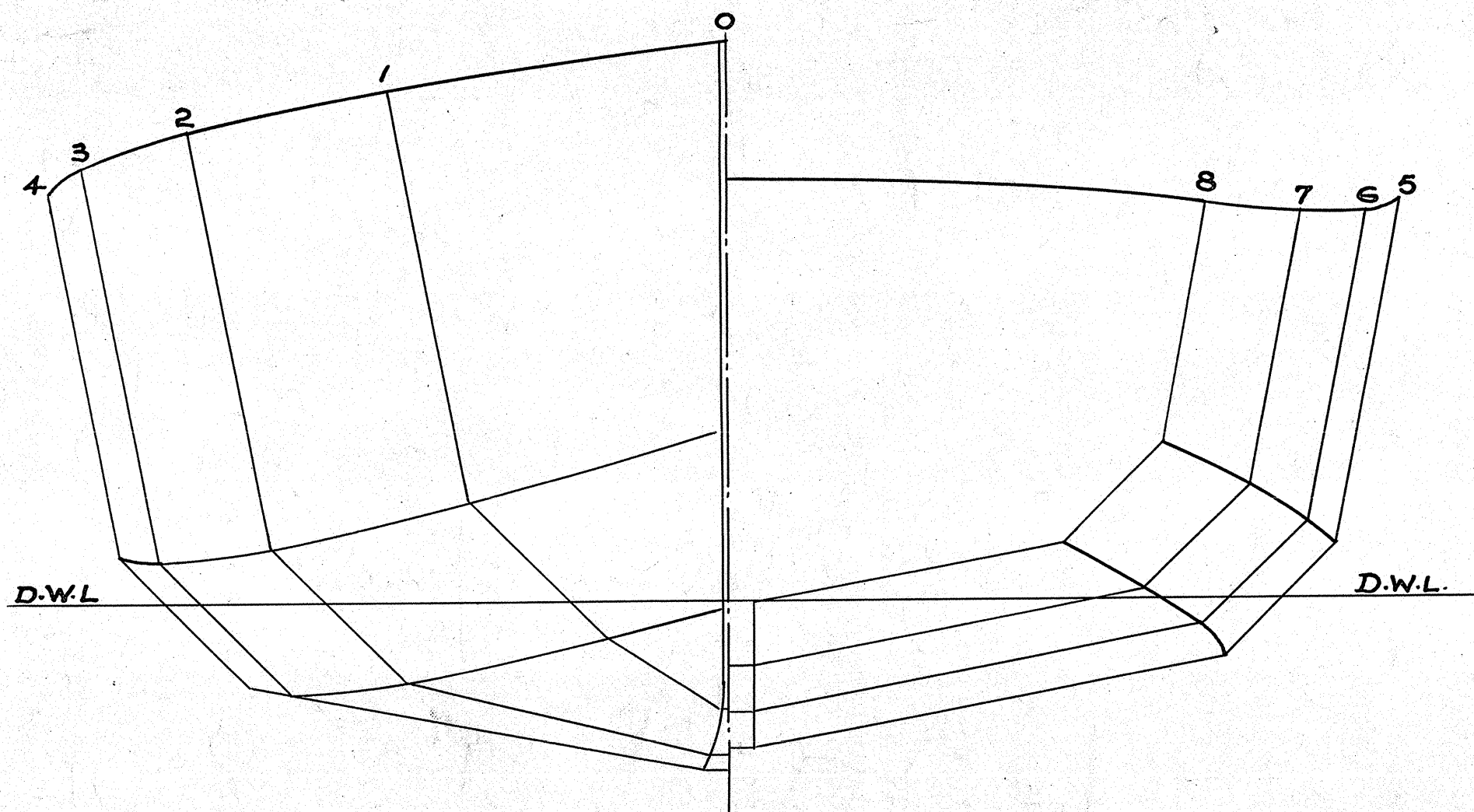
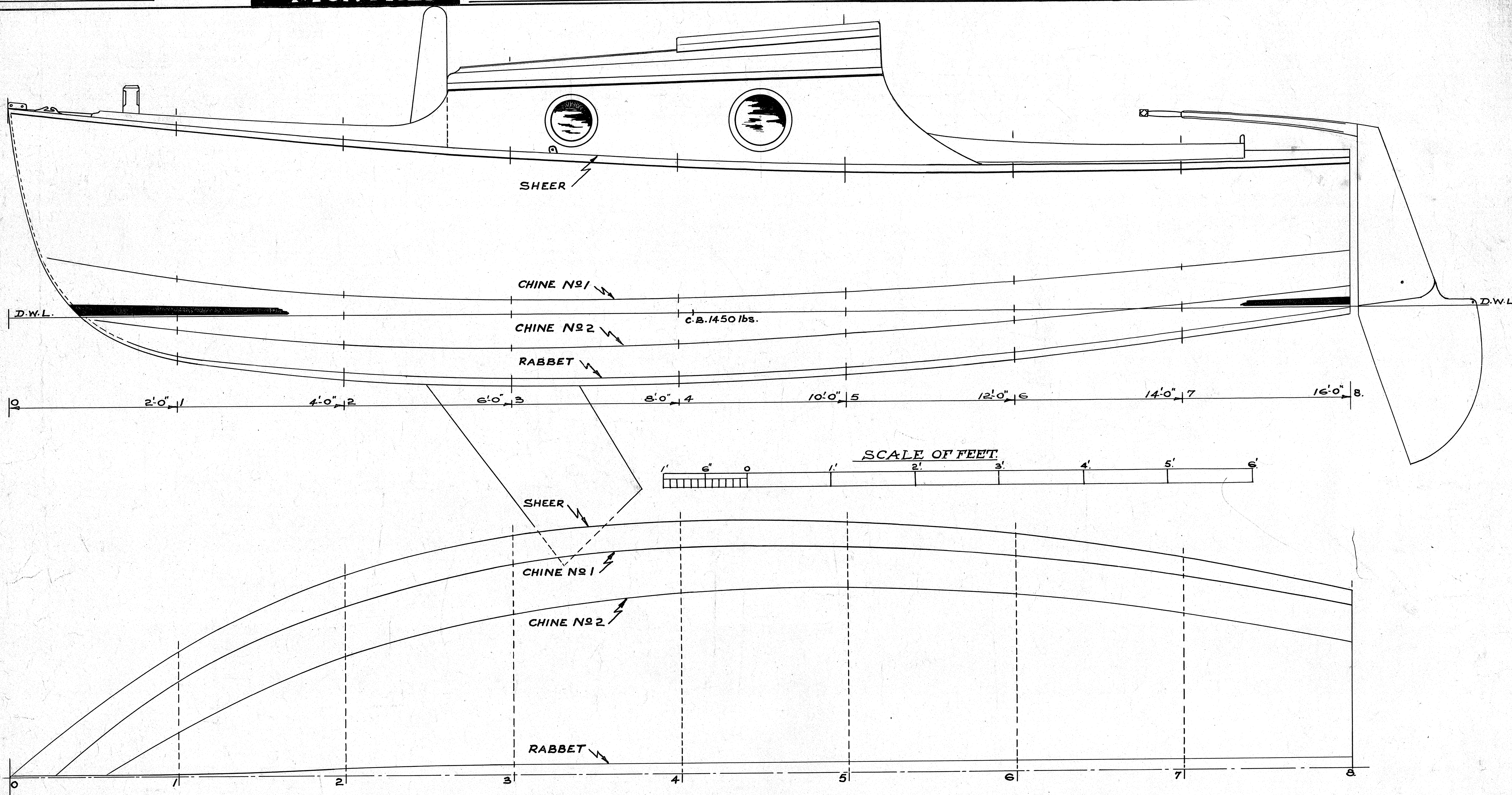


SPECIAL NOTE. DIMENSIONS OF BULKHEADS ARE GIVEN ON SHEET No 4.



**OFFSETS.** DIMENSIONS GIVEN TO NEAREST 1/8 INCH.

STATION.	0	1	2.	3.	4.	5.	6.	7.	8.
SHEER.	2' 6"	2' 3 1/2"	2' 1 1/4"	1' 11 1/2"	1' 10 1/8"	1' 9 1/8"	1' 8 3/4"	1' 8 7/8"	1' 9 3/8"
CHINE No 1.		5 3/8"	2 7/8"	2 1/8"	2 1/8"	2 7/8"	4 1/8"	5 1/8"	8 1/8"
CHINE No 2.		- 1 7/8"	- 4 1/8"	- 4 7/8"	- 4 3/8"	- 3 1/8"	- 1 1/2"	+ 1/2"	+ 3"
RABBET.		- 5 1/4"	- 8 1/8"	- 9 1/8"	- 9 1/8"	- 8"	- 6"	- 3 3/8"	0"
SHEER.	3/8"	1' 6"	2' 4 7/8"	2' 10 3/8"	3' 0 1/4"	3' 0"	2' 10 1/8"	2' 6 1/2"	2' 11 1/2"
CHINE No 1.		1' 1 3/4"	2' 0 3/8"	2' 6 3/8"	2' 8 1/2"	2' 8 1/2"	2' 7"	2' 3 7/8"	1' 11 3/8"
CHINE No 2.		6 3/8"	1' 5 1/4"	1' 11 1/8"	2' 2 1/2"	2' 2 5/8"	2' 1 1/8"	1' 10 3/8"	1' 6"
RABBET.		1/2"	1 1/8"	1 3/8"	=	=	=	=	1 3/8"

HEIGHTS ABOVE AND BELOW D.W.L.

HALF BREADTHS

**GENERAL DIMENSIONS.**  
 L.O.A. 16' 0"  
 D.W.L. 15' 1 1/2"  
 BEAM MAX. 6' 0 1/2"  
 DRAUGHT. 10' 8 3/4"  
 DISPLACEMENT. 1450 lbs.  
 SCALE. 1/2" = 1'

DISPLACEMENT = TOTAL WEIGHT OF BOAT, CREW OF 2 & GEAR WHEN FLOATING TO D.W.L.  
 WEIGHT OF BOAT FOR TRAILING. 950 lbs.  
 WEIGHT LESS SPARS, RIGGING & GEAR 750 lbs.