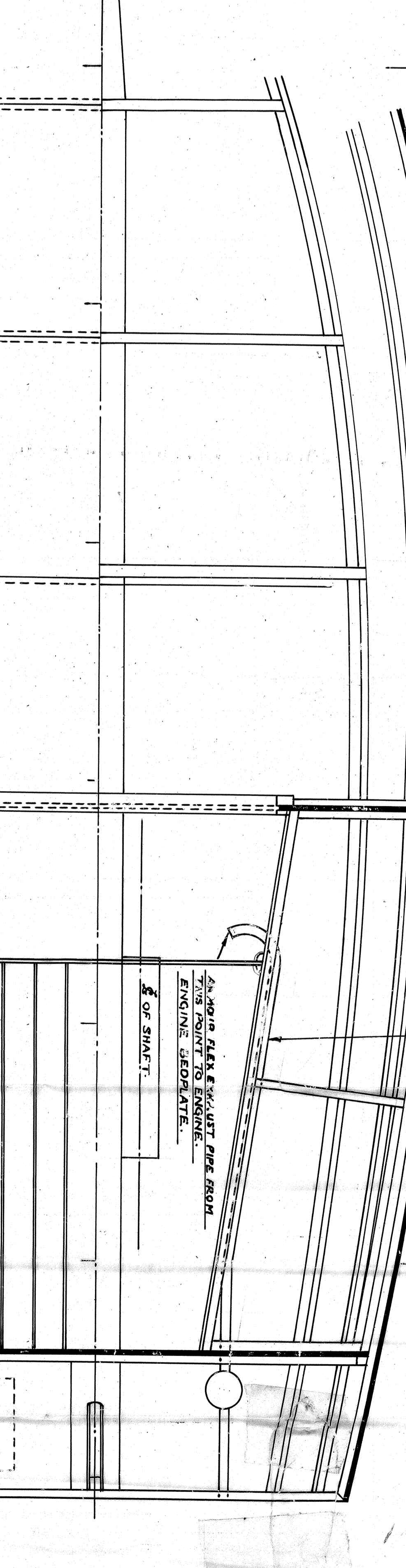
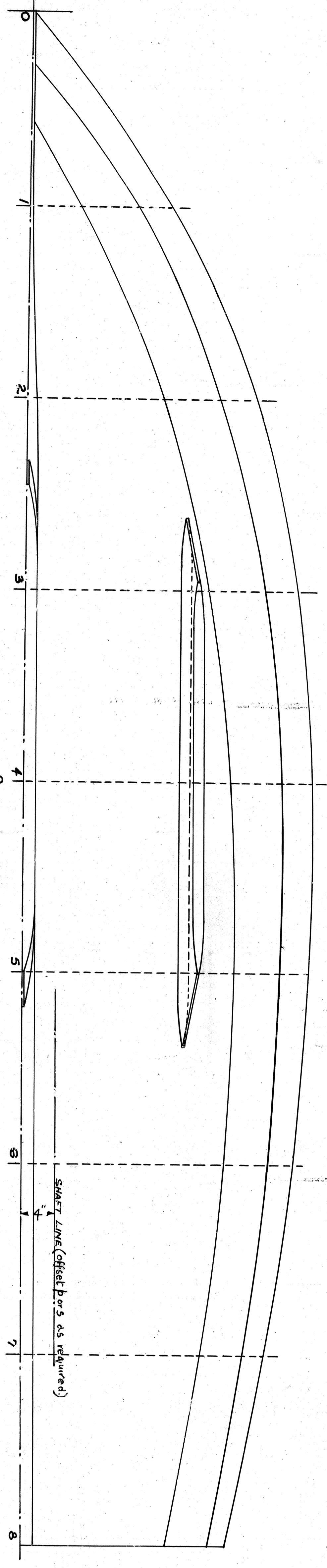
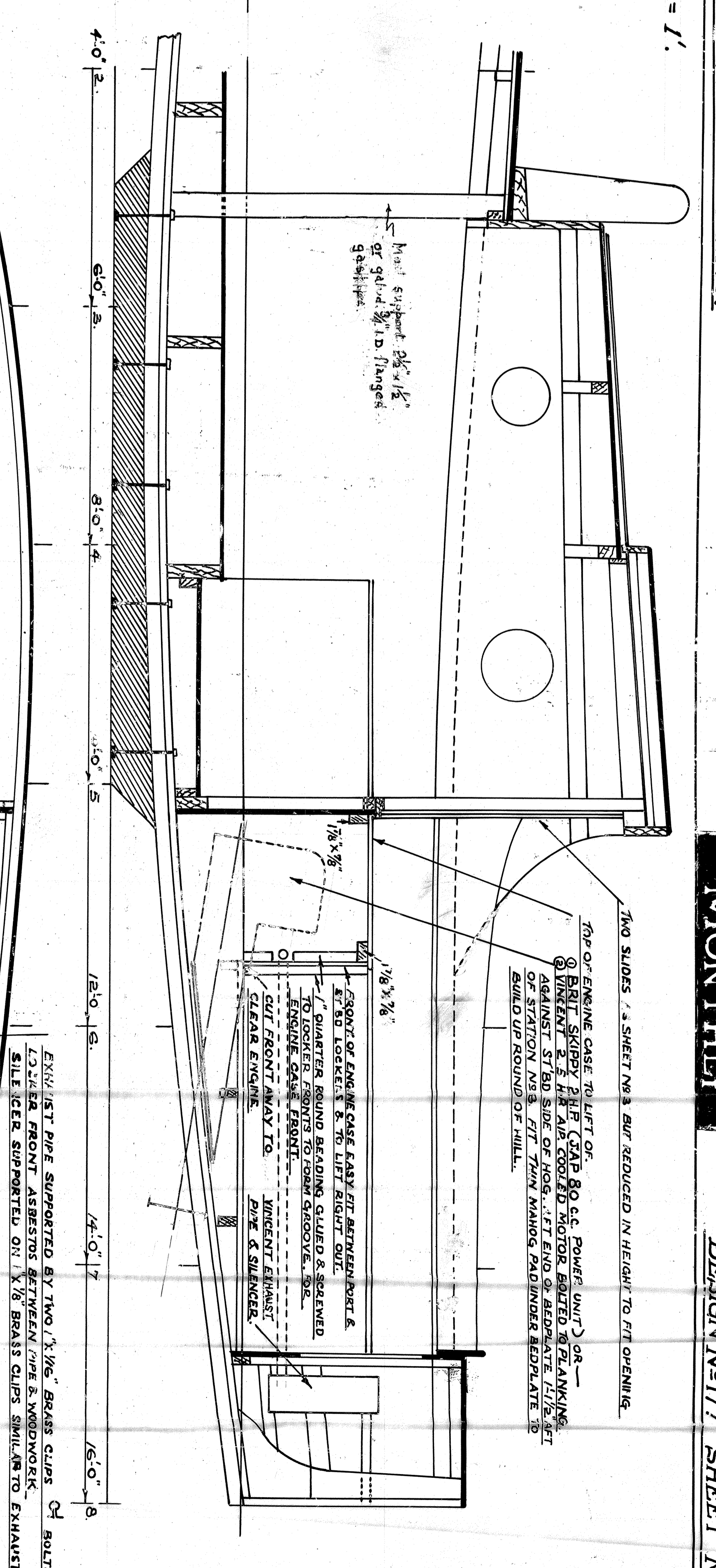
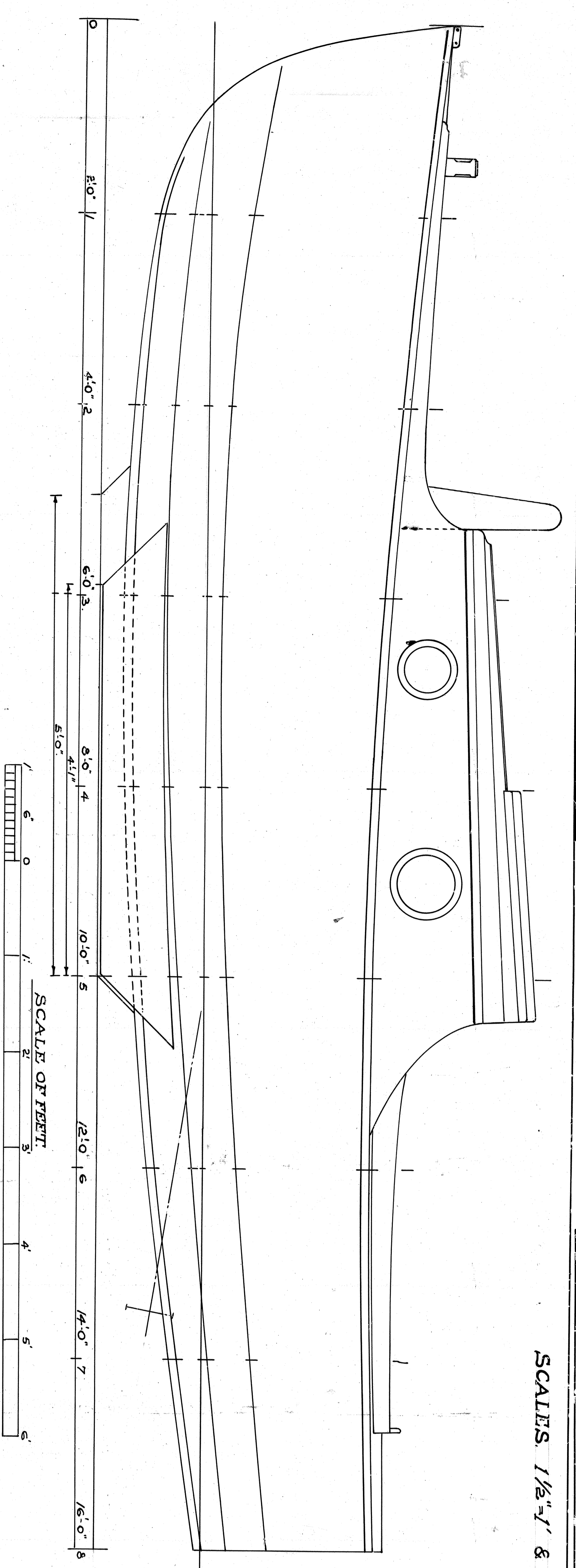
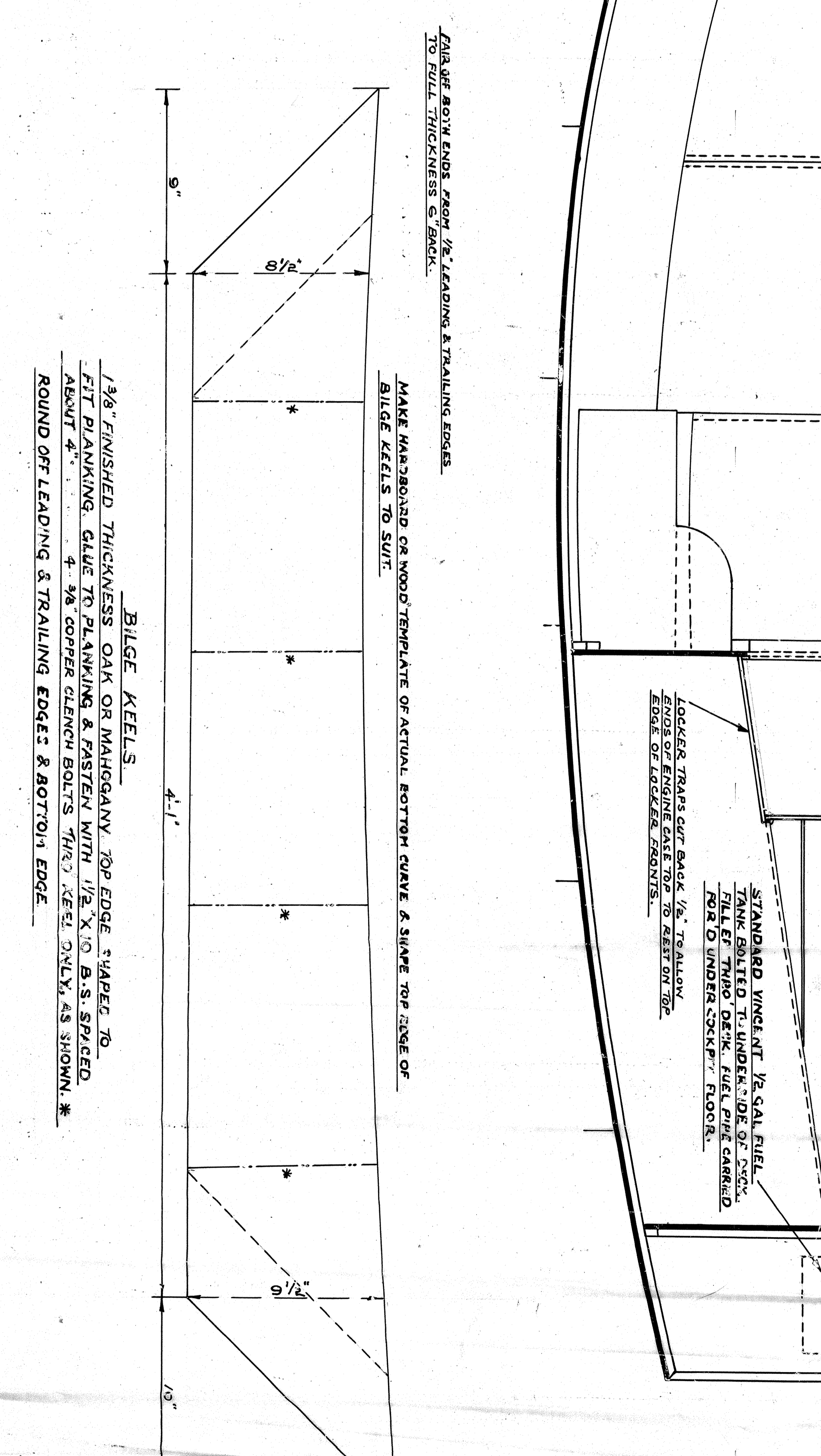
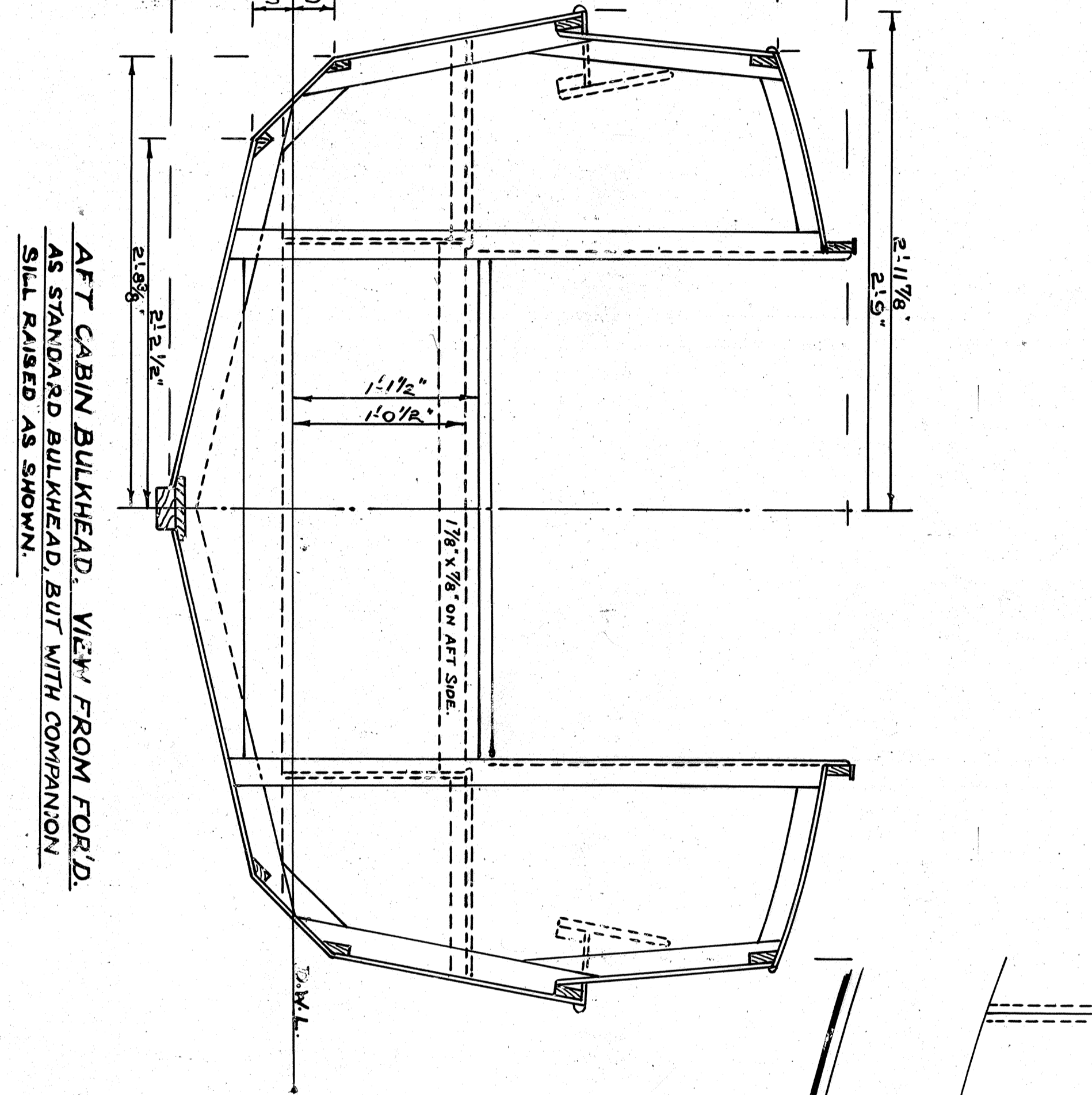
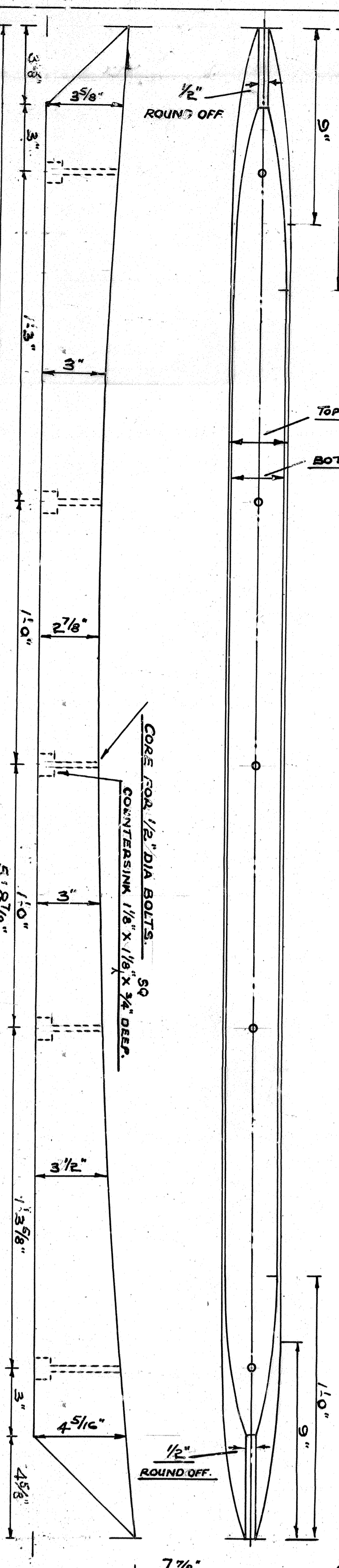
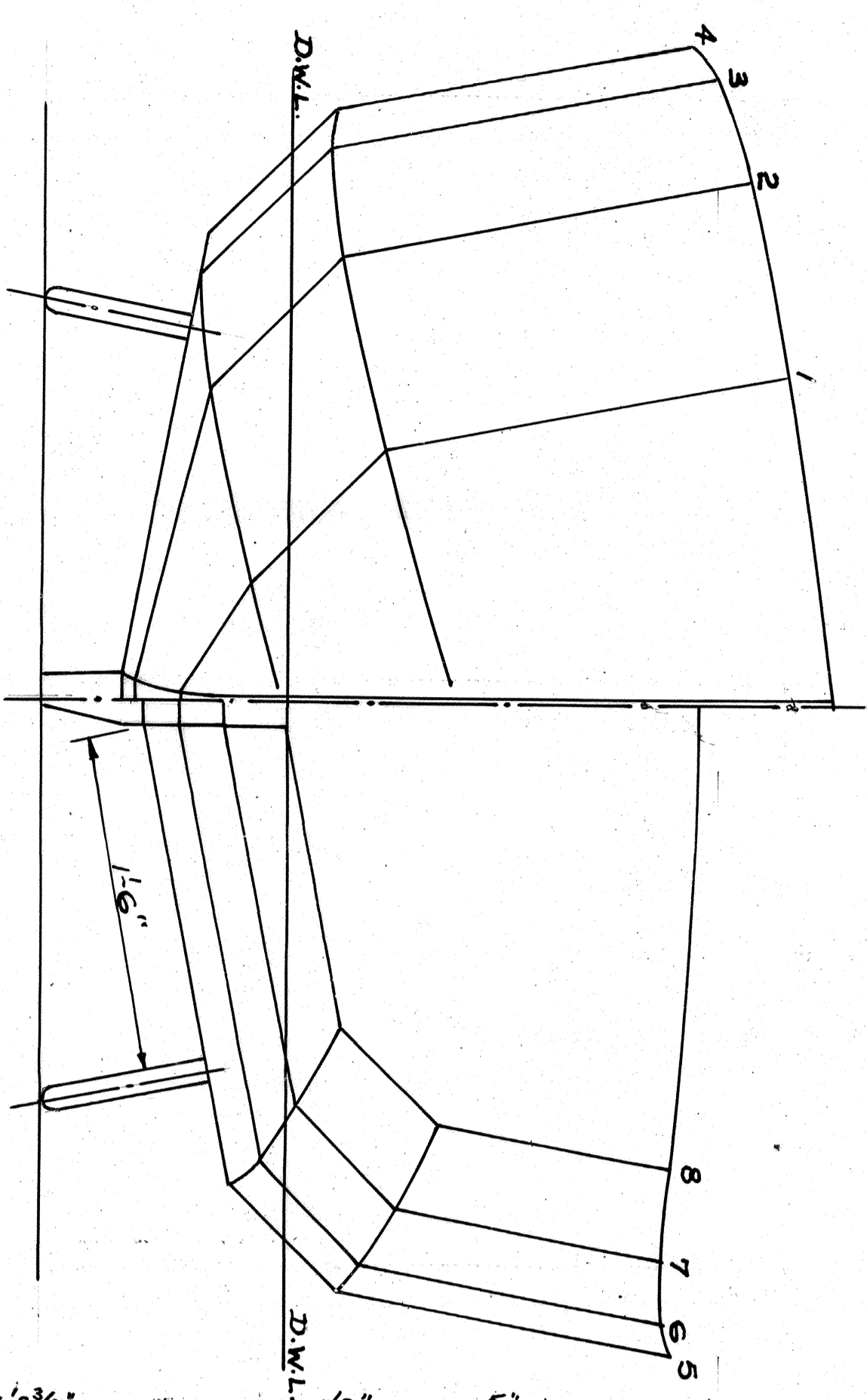


SCALE 1 1/2" = 1' & 3" = 1'



LENGTH O.A. 16'-0"
 D.W.L. 15'-1 1/2"
 BEAM. 6'-0 1/2"
 DRAUGHT. 1'-2"
 DISPLACEMENT-with gear 1550 lbs.
 WEIGHT FOR TRAILING 1050 lbs.



BALLAST KEEL CAST IRON. 180 LBS.

AFT CABIN BULKHEAD. VIEW FROM FORWARD.
 AS STANDARD BULKHEAD BUT WITH COMPANION
 SILL RAISED AS SHOWN.

1/8" FINISHED THICKNESS OAK OR WALNUT TOP EDGE TAPER TO
 FIT PLANING. GLEBE PLANING & PASTE WITH 1/2" X 10" B.S. SPYGLASS
 ASSORT * * * * * 1/8" COPPER CLENCH BOLTS (H&C) (SEE DETAILED AS SHOWN) *
 ROUND OFF LEADING & TRAILING EDGES & BOTTOM EDGE.

STANDARD WINDMILL 1/2 GAL FUEL
 TANK BOLTED TO UNDER SIDE OF DECK
 FOR O UNDER COCKPIT. FLOOR
 LOCATED TRANSVERSE BACK 1/2" TRAILING
 EDGE OF LOWER DECK.

EXHAUST PIPE SUPPORTED BY TWO 1/2" BRASS CLIPS OF BOLTED TO
 1/2" ALUMINUM BRASS BOLTS BETWEEN PIPE & WOODWORK.
 SLICER SUPPORTED ON 1/8" BRASS CLIPS SIMILAR TO EXHAUST PIPE CLIPS.

2" HOLE ALUMINUM W/UT PIPE FROM
 TOP POINT TO ENGINE.
 ENGINE SEPARATE.

1/8" OF SHEET

1/8" OF ENGINE CASE EASY FIT METEORIC BOLT &
 1/8" LOGSKEET & TO LEFT RIGHT SIDE
 QUARTER ROUND BEARING CLIPS & SCREWED
 ENGINE CASE FRONT
 CUT FRONT AWAY TO
 UNOBTAIN CLEARANCE
 CLEAR ENGINE
 PIPE & SILENCER

TWO SLIDES * SHEET NO 3 BUT REDUCED IN HEIGHT TO FIT OPENING

TOP OF ENGINE CASE BUILT UP OF
 1/8" BRIT SILENT PIPE CAP BO SC POWER UNIT OR
 1/8" BRIT SILENT PIPE CAP BO SC POWER UNIT OR
 AGAINST ST 80 SIDE OF HOUS. LEFT END OF REDUCED PLANNING
 1/8" BRIT SILENT PIPE CAP BO SC POWER UNIT OR
 GUID UP ROUND OFF HULL.

FOR USE BOW AND AFT 1/8" LEADING & TRAILING EDGES
 TO BULL THICKNESS OF BULK

MAKE HANDRAIL OR WOOD TEMPLATE OF ACTUAL BOTTOM CURVE & SHAPE TOP EDGE OF
 BILGE KEELS TO SUIT.

BILGE KEELS