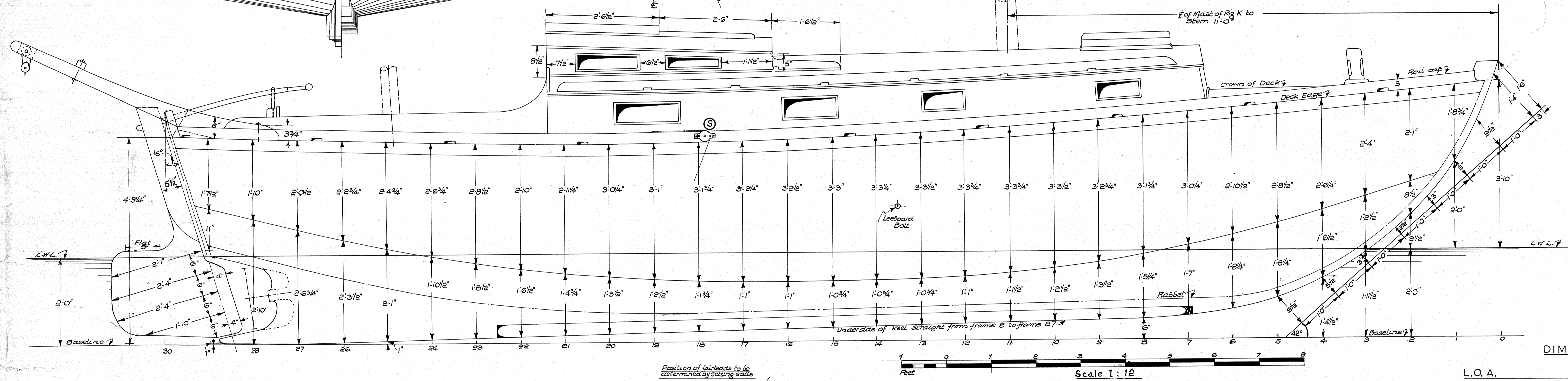
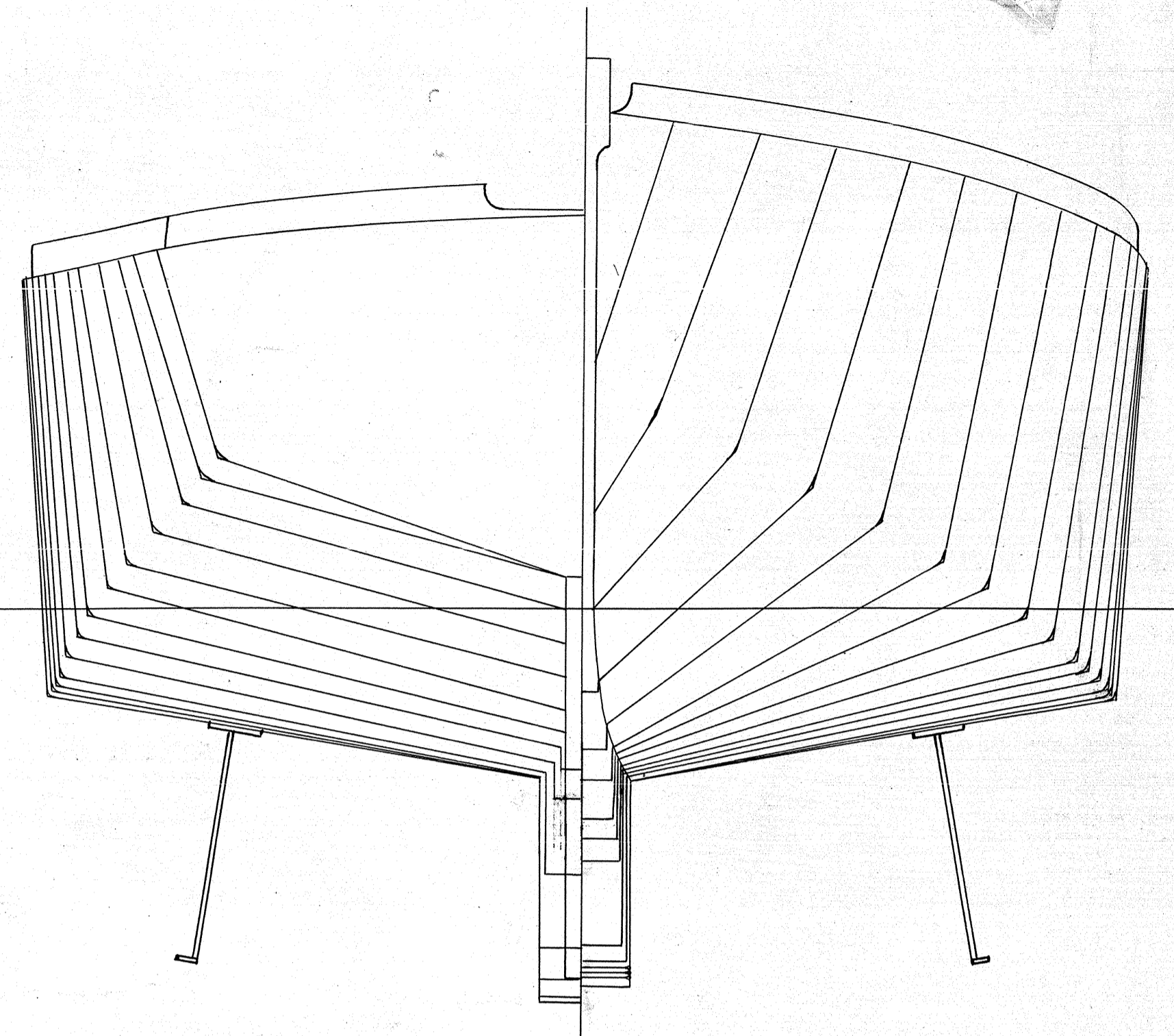


Notes on using Leeboards.
 To get the best out of Leeboards the skipper must WORK them like a centreboard.
 In WATERWITCH it is recommended that:-
 1. In LIGHT WINDS on the beam or aft both leeboards be hauled up or the board on the lee side lowered a few inches only below the chine as found best.
 2. In FRESH to STRONG FAIR WINDS the leeboard should be lowered a foot or so below the chine to find the best position for steering.
 3. In LIGHT WINDS FORWARD of the BEAM and little sea both boards may be lowered. If WATERWITCH begins to carry lee helm in light airs the board on the lee side should be dropped right down until the correct balance is obtained. Small barges are sensitive to changes in position of their leeboards therefore balance between lee helm in light airs to too much weather helm in strong breezes can often be maintained by adjusting angle of leeboard.
 4. When short tacking up a narrow channel both boards can be left down at about 45°.
 5. On longer tacks and always in any seaway and in strong winds the weather board must be hauled up.
 6. When at anchor both boards should be hauled clear of the water to clear and wear on the pivot bolt.



DIMENSIONS

L.O.A.	30'-0"
L.W.L.	26'-0"
BEAM AT DECK	8'-6"
BEAM AT CHINES	8'-1"
DRAUGHT MK II	2'-0"
EST. WEIGHT, Hull only excl. Keel & Ballast	3200 LBS.
IRON KEEL	about 1200 LBS.
INSIDE TRIM (Lead or Iron)	about 800 LBS.
DISPLACEMENT (CRUISING TRIM)	7600 LBS.
THAMES MEASUREMENT	8 TONS

