

Sail	Luff	Leach	Foot	Area in Sq. Ft.	Cotton Wt.*	Remarks.
Main sail	27'-0"	29'-3"	12'-0"	176 sq	10 ozs.	Slides on mast & boom. 3 plastic battens in droppockets
Mizzen	18'-0"	18'-11"	7'-6"	76 sq	8 ozs.	Similar to main sail.
No 1 Jib	26'-0"	23'-0"	12'-0"	138 sq	9 ozs.	Piston hanks to forestay.
No 2 Jib	20'-0"	16'-8"	8'-6"	70 sq	10 ozs.	Ditto.
Genoa	29'-0"	27'-3"	16'-0"	215 sq	6 ozs.	Ditto.

Measurements cringle to cringle fully stretched. * For Terylene sails obtain sailmakers advice on weight and make.

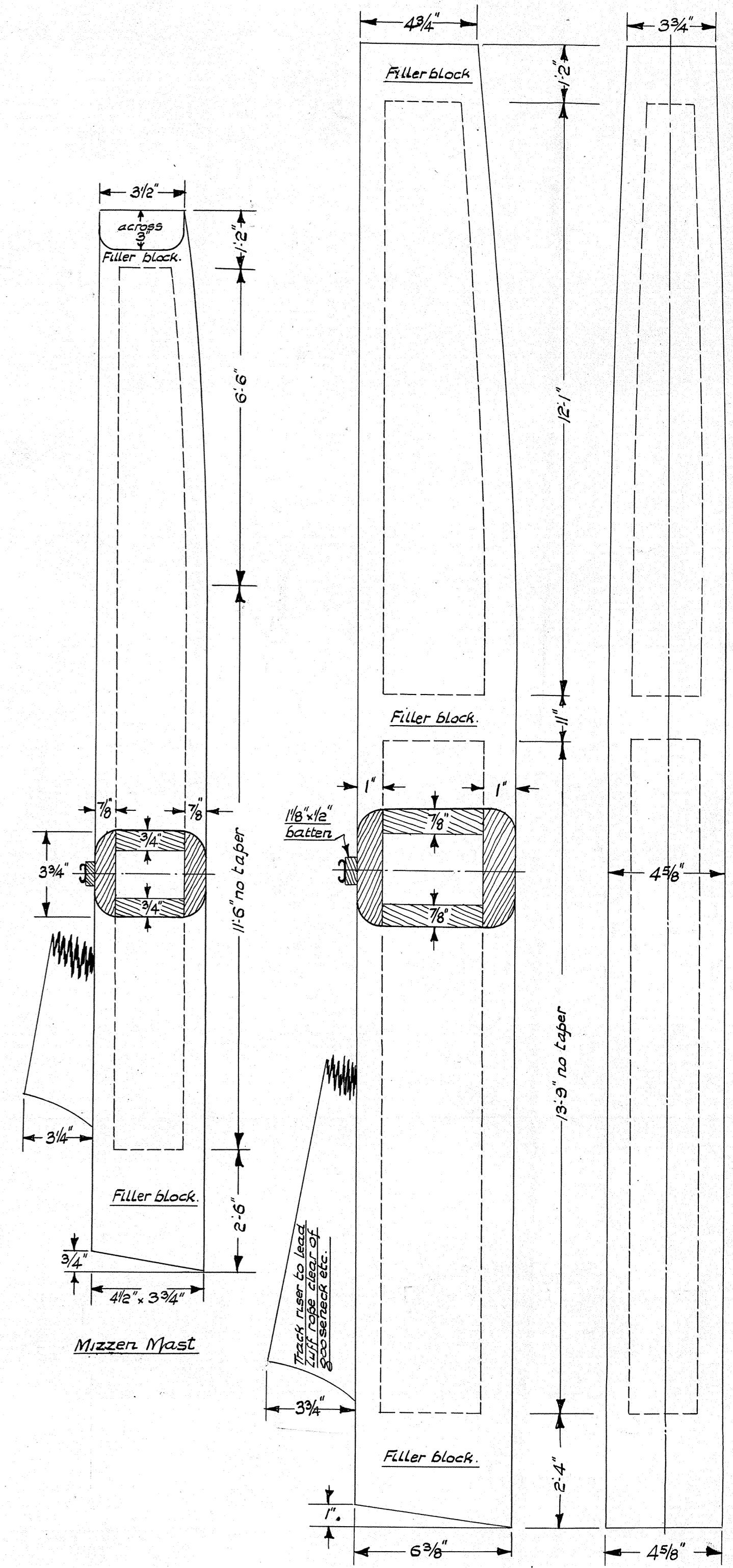
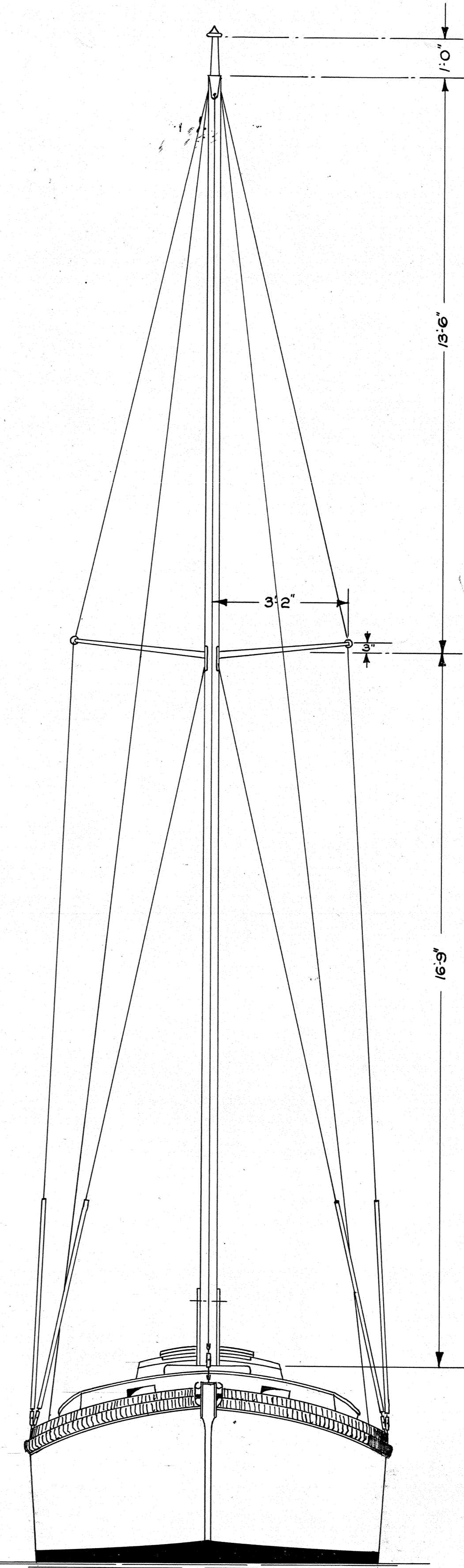
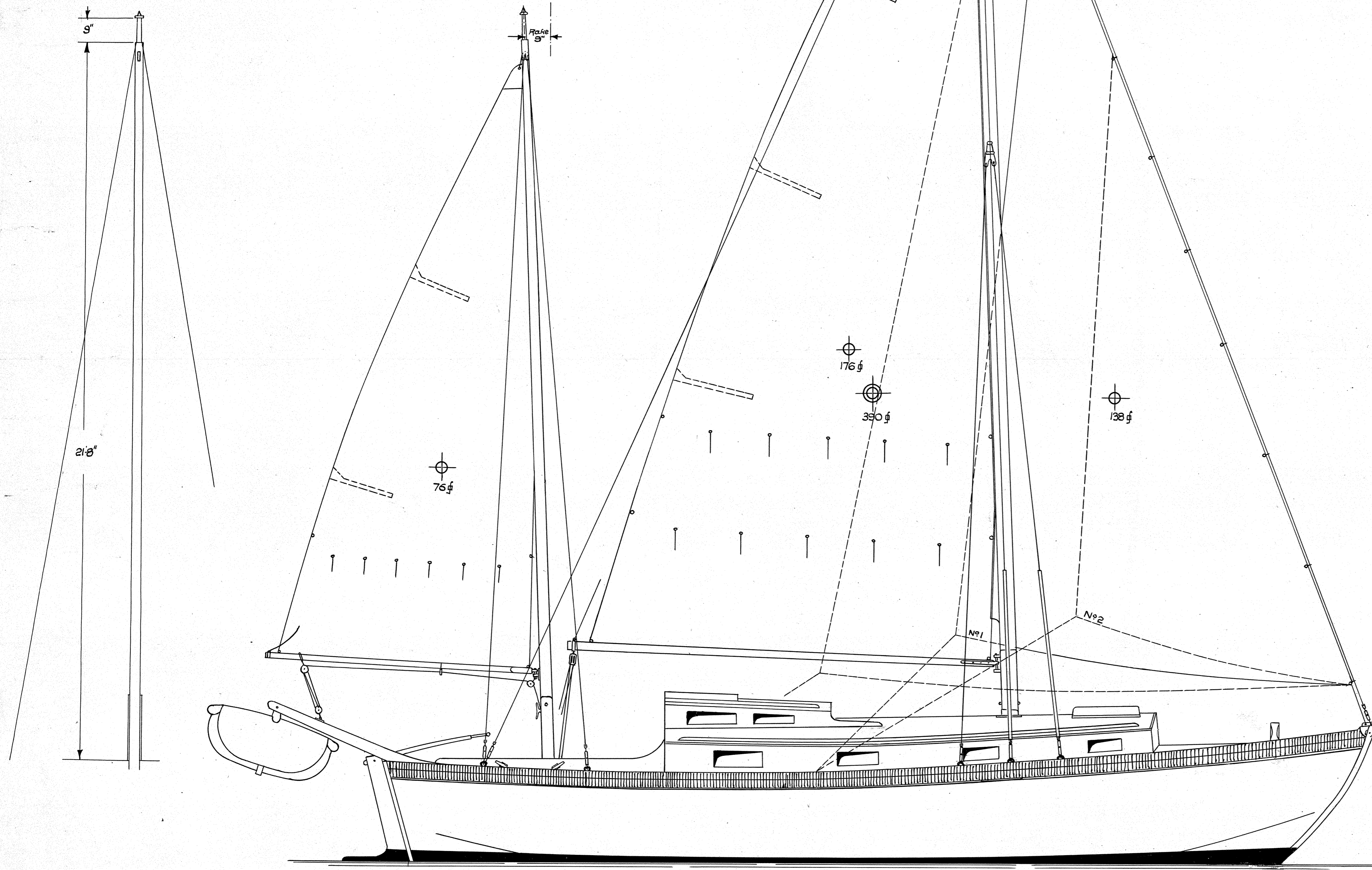
Standing Rigging.

1 Main Forestay, four lower shrouds and two masthead shrouds — 3/4" circ. p.s.w. 7*7 constr.

Two masthead backstays — 5/8" circ. p.s.w. 7*7 constr.

2 Mizzen Four masthead shrouds — 5/8" circ. p.s.w. 7*7 constr.

Scale 1/24



Rig K. Main Mast - Hollow spruce.

Main Boom: Solid, round. Red or Columbian pine or spruce. Dimensions: 12'-10" length, 4 1/4" diameter, 3/4" wall thickness.

Mizzen Boom: Solid, round. Red or Columbian pine or spruce. Dimensions: 8'-2" length, 3 3/8" diameter, 2 3/8" wall thickness.