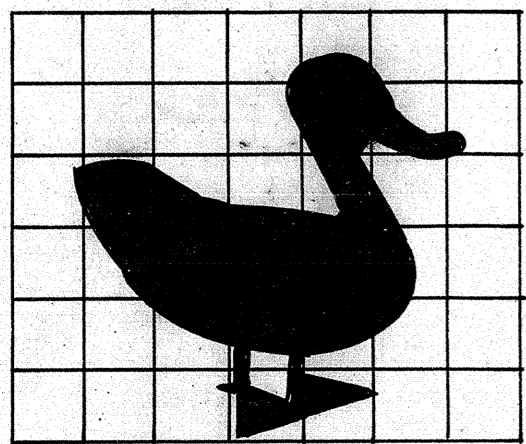


YACHTING MONTHLY 19/16FT. SLOOP -WILD DUCK-

SAIL PLAN.



3" SQUARES.

MAINSAIL
140 f 6 TO 7 oz. COTTON.

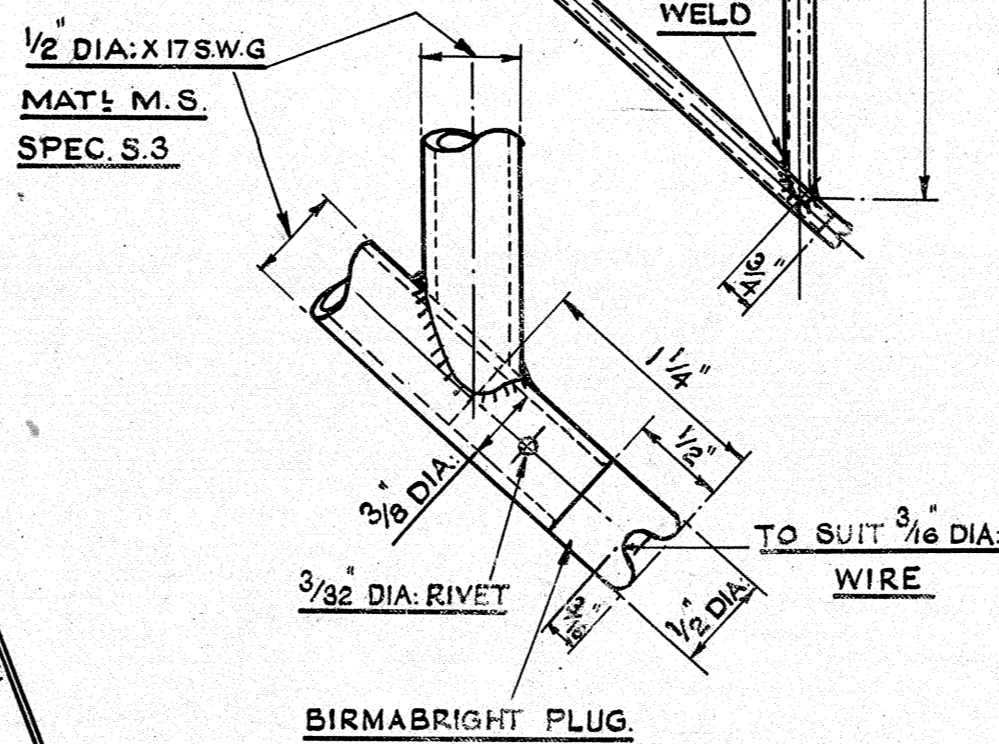
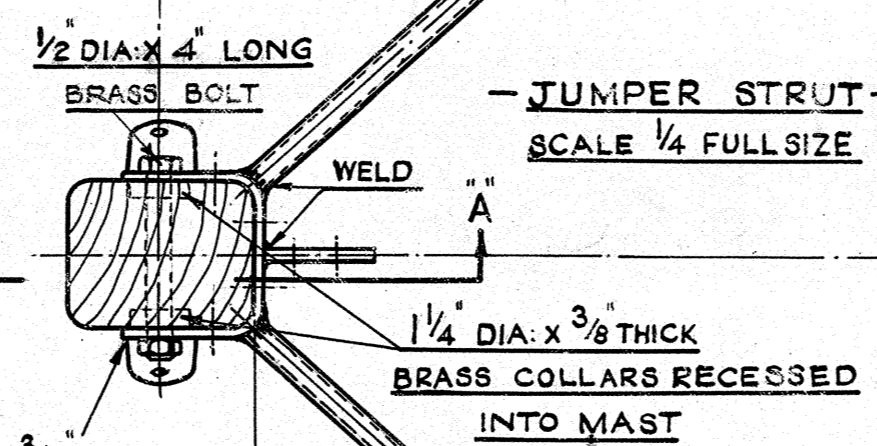
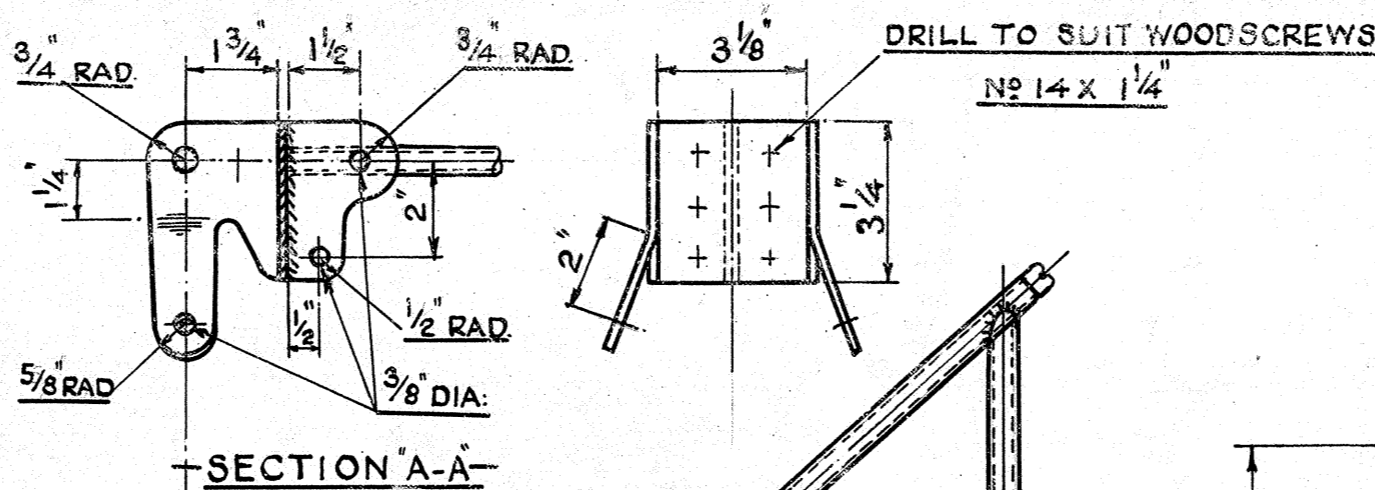
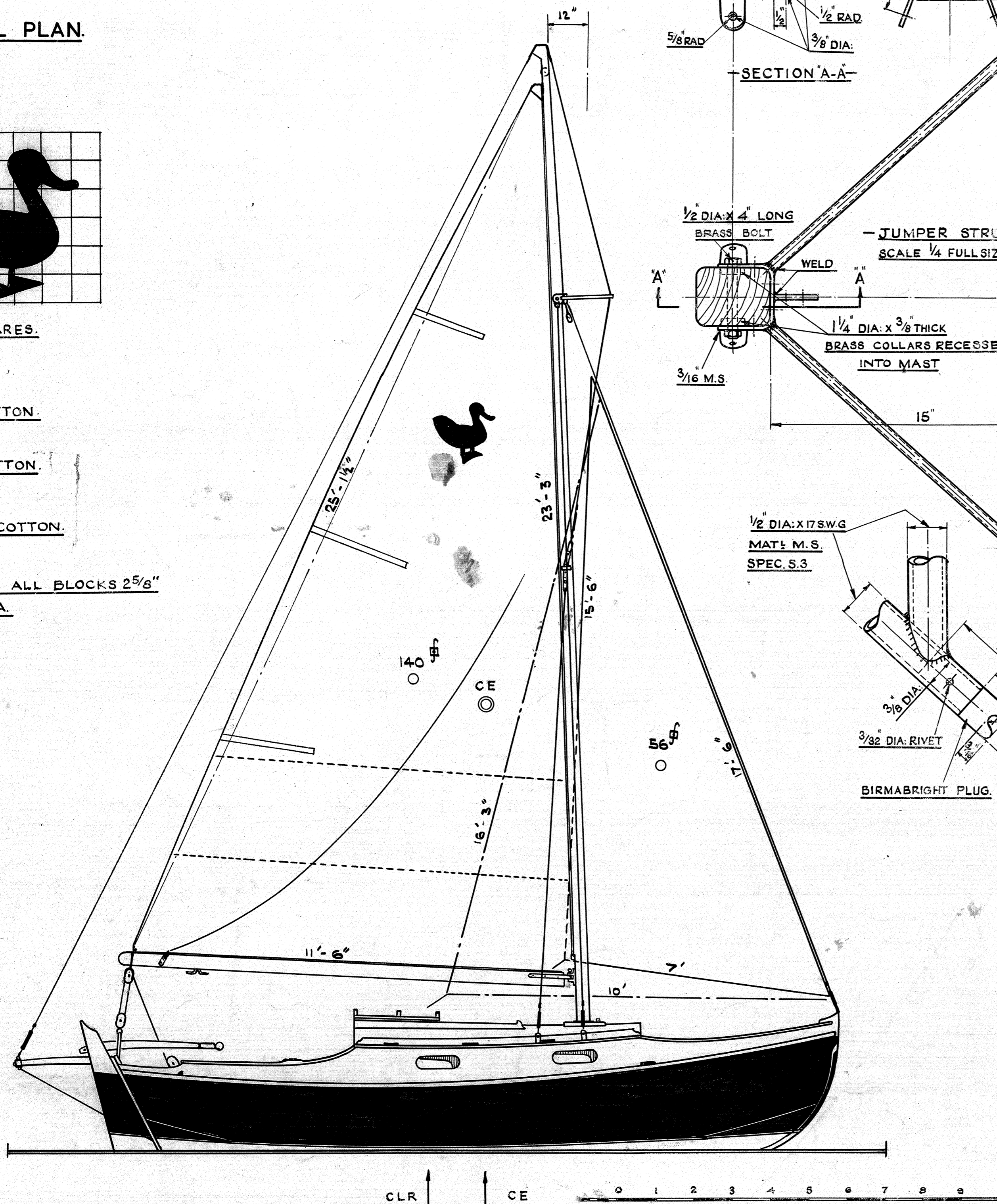
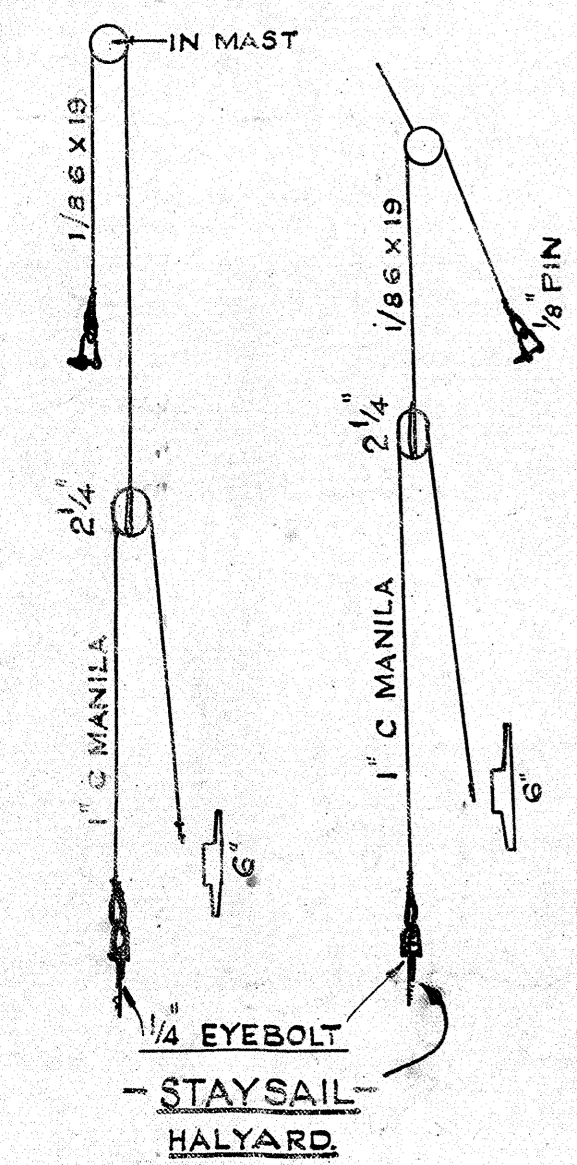
STAYSAIL
56 f 6 TO 7 oz. COTTON.

GENOA
78 f 4 1/2 TO 5 oz. COTTON.

MAIN SHEET 1 1/8 C MANILA ALL BLOCKS 2 5/8"

STAYSAIL SHEET 1" C MANILA.

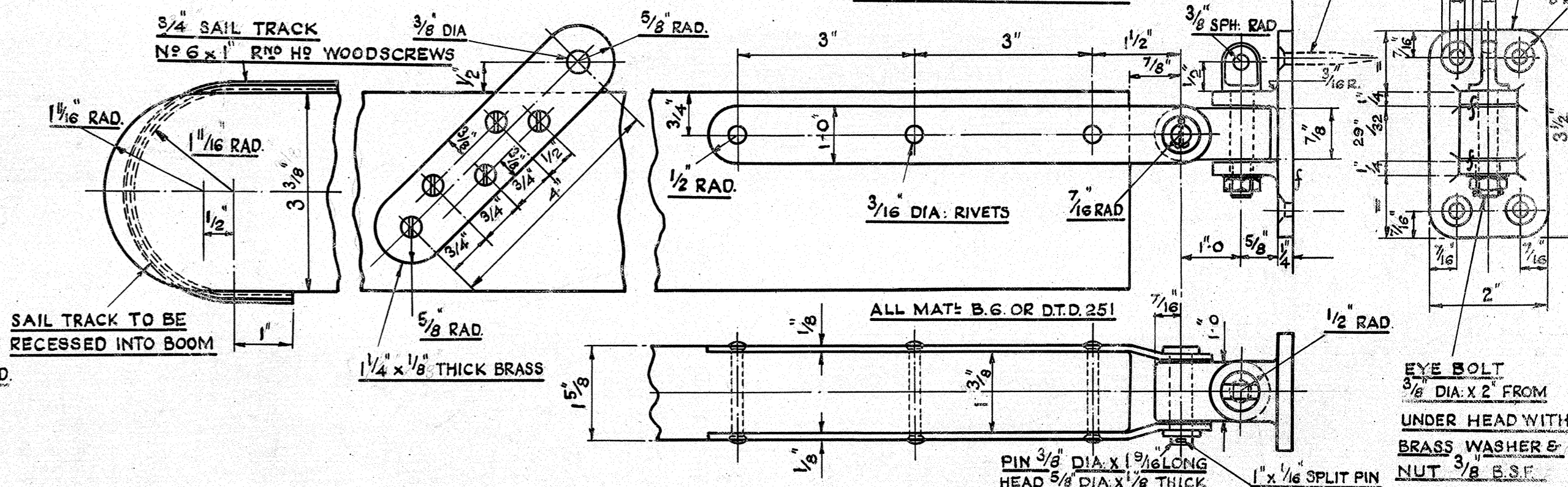
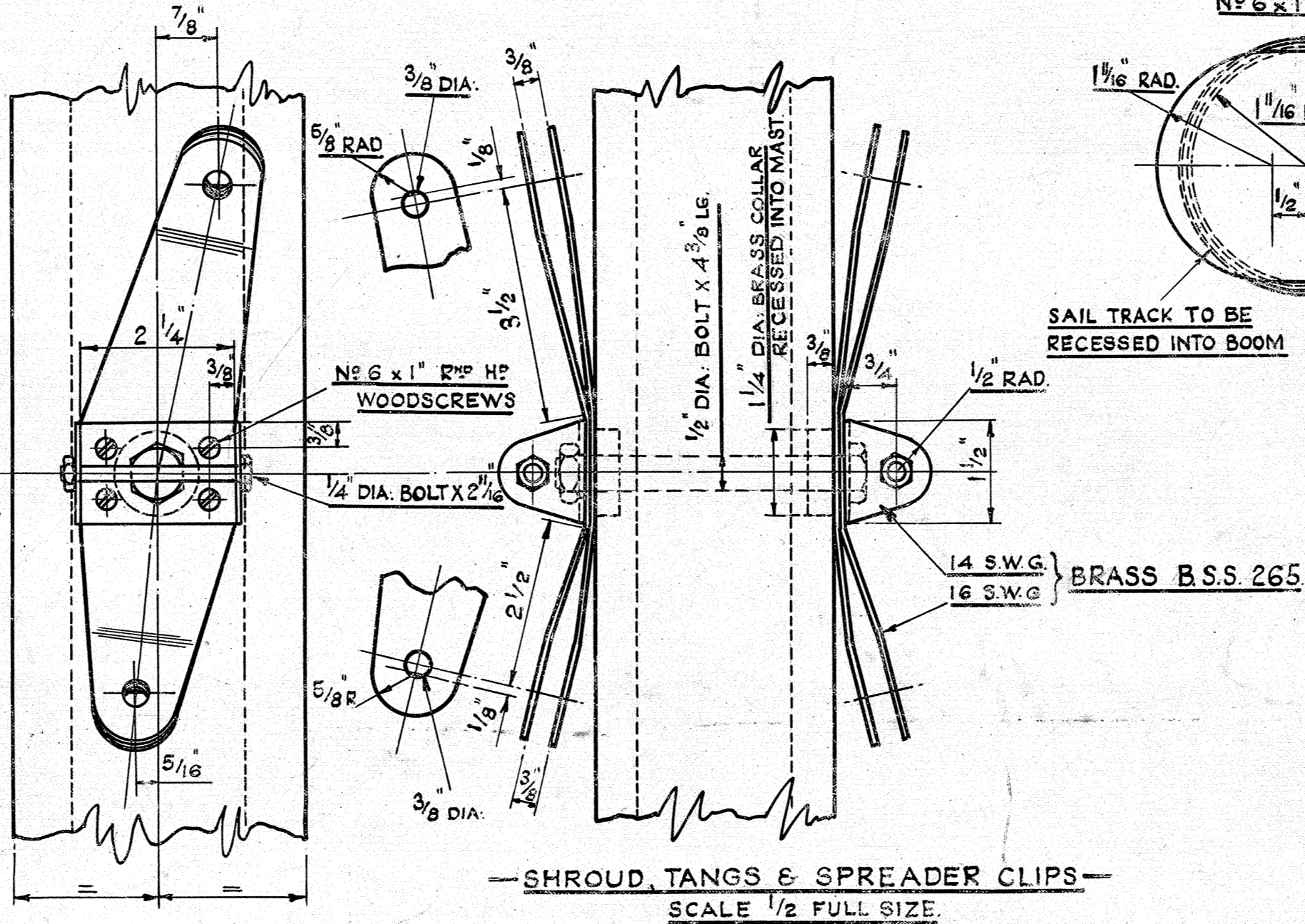
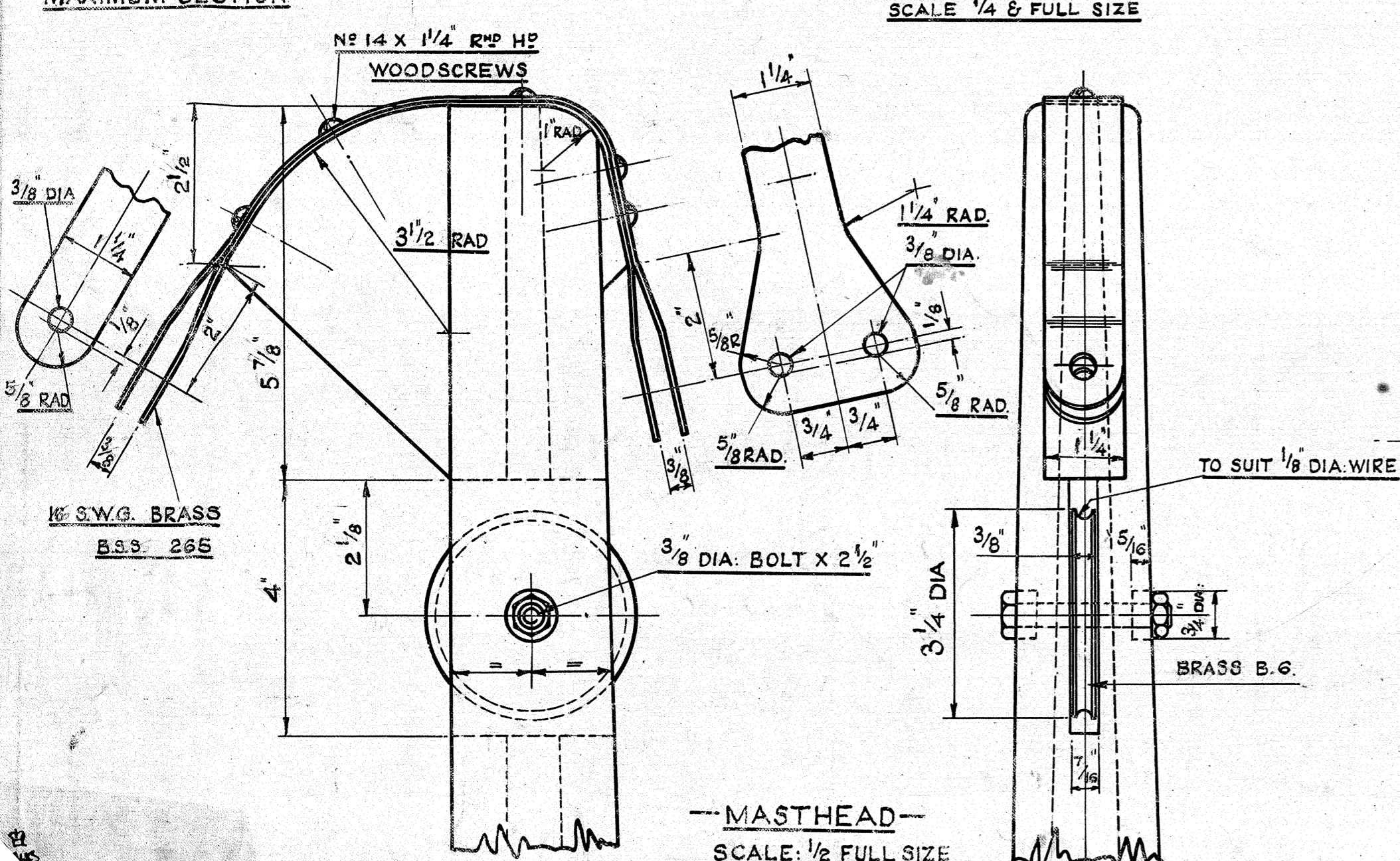
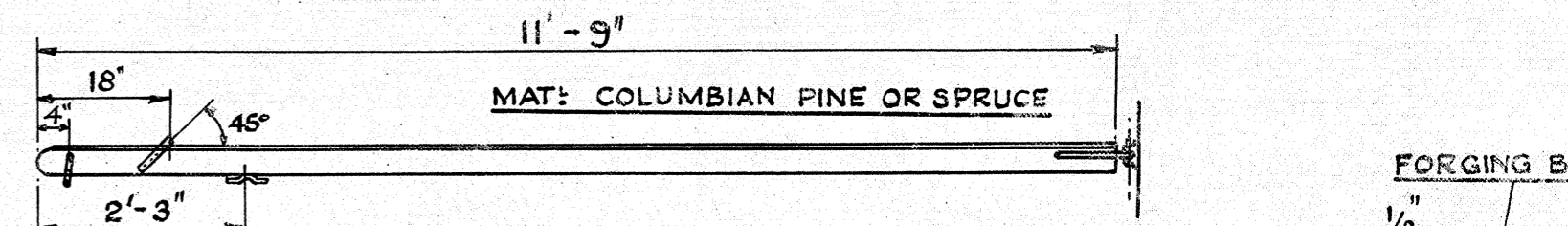
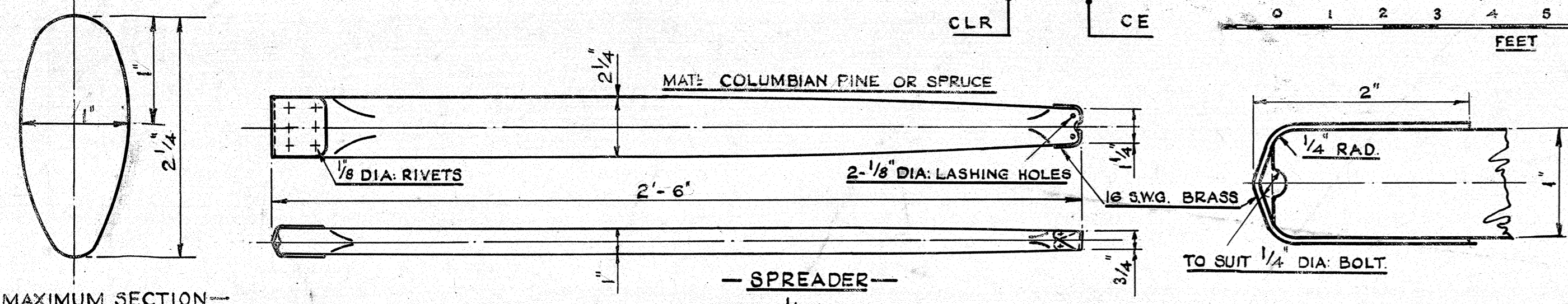
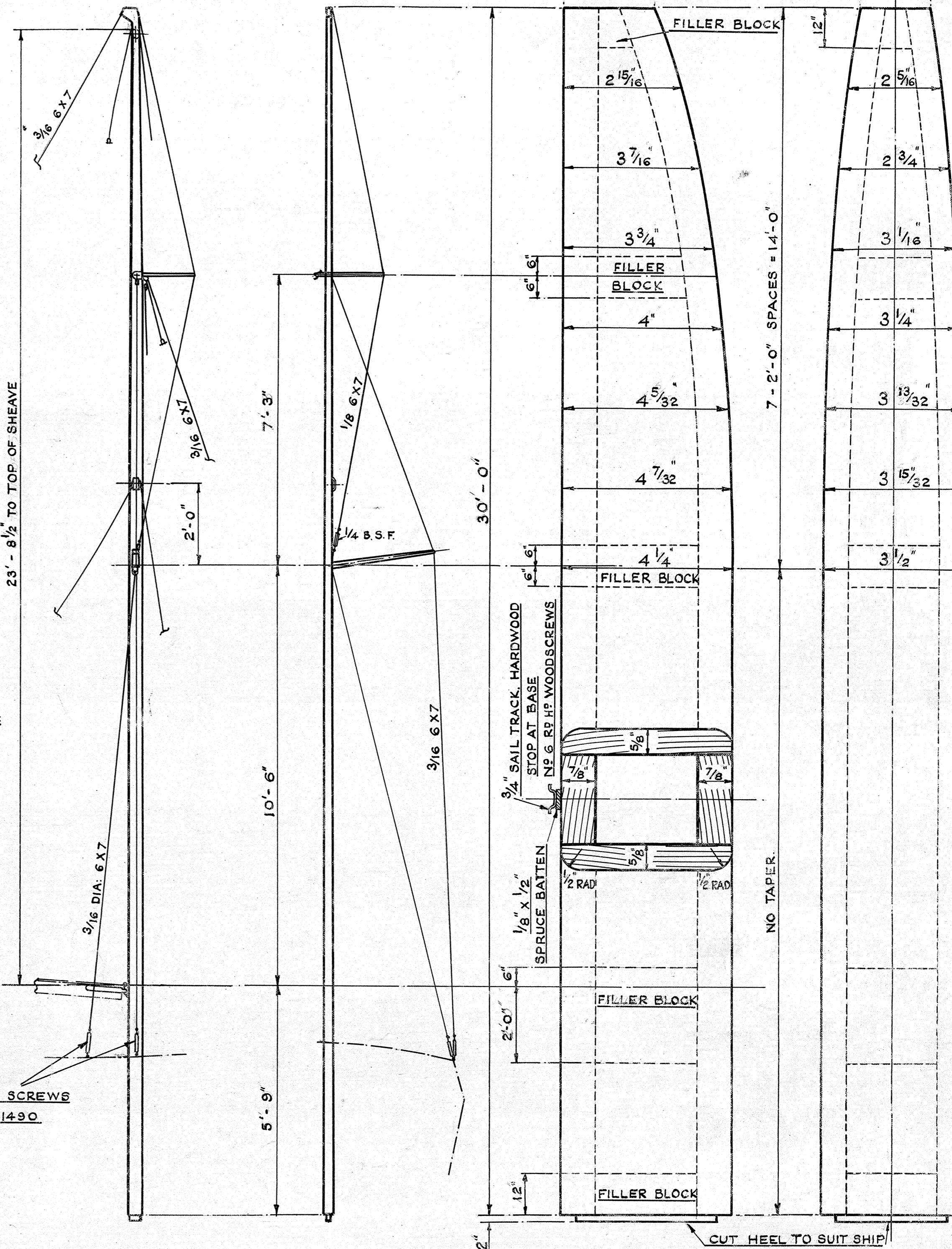
MAIN HALYARD.



-RIGGING-
SCALE 1/2" = 1 FT

-DETAIL OF MAST-
SCALE FOR LENGTH 1/2" = 1 FT
SCALE FOR WIDTHS 1/2 FULL SIZE.

MAT:
COLUMBIAN PINE
OR SPRUCE



"WILD DUCK" - 19' CRUISING SLOOP.
DESIGNED FOR YACHTING MONTHLY LTD.
BY ALAN BUCHANAN A.I.N.A. A.R.A.E.S.
SAIL PLAN & RIGGING DETAILS.
DRAWING NO 145 SHT: 3.