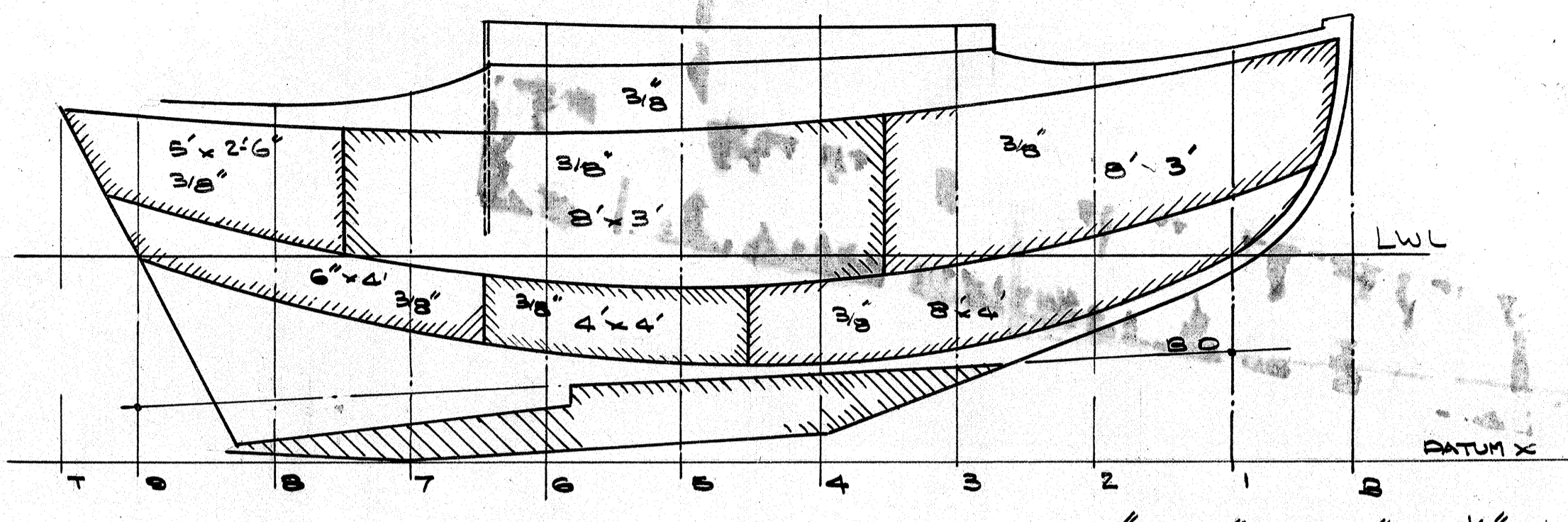


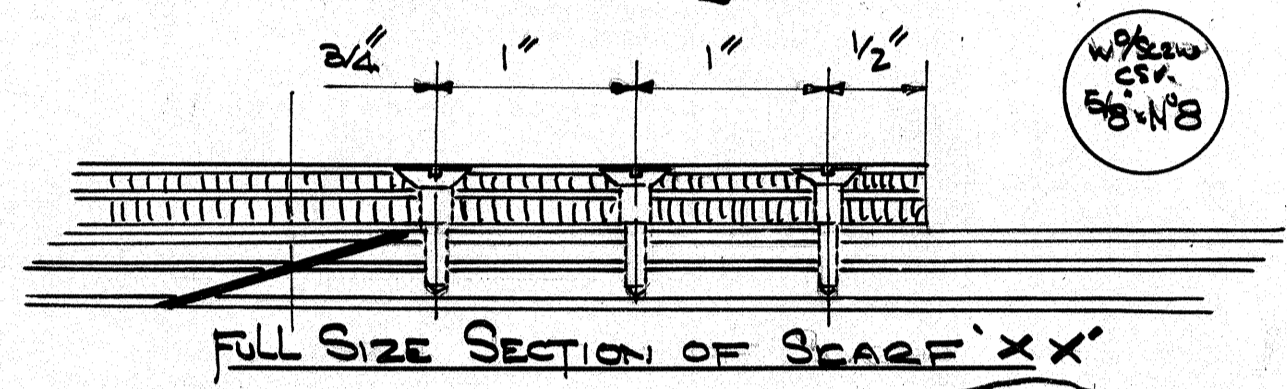
FOR PLYWOOD JOINT
SEE DETAIL A'



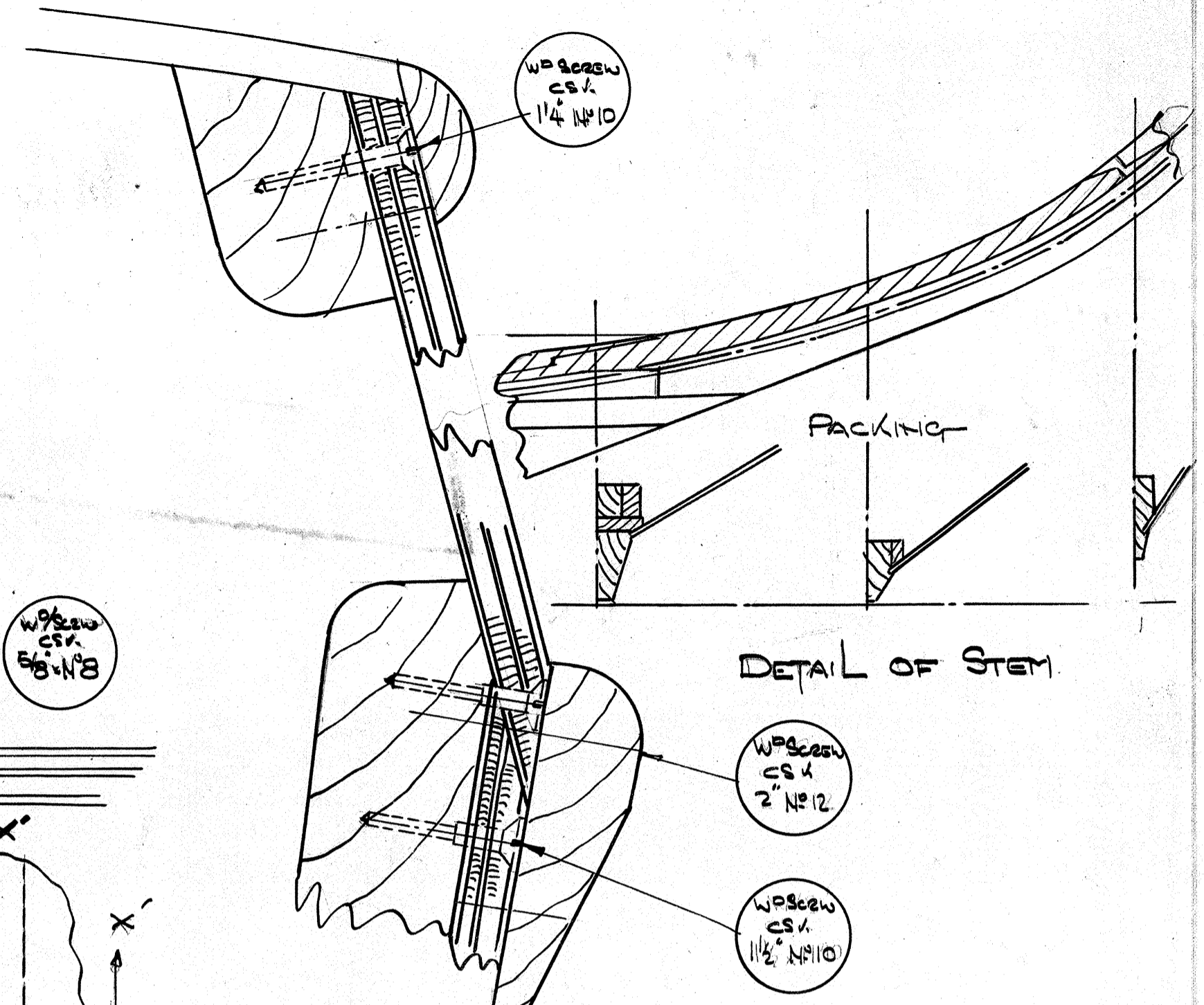
LAYOUT OF PLY SKINS

NOTE

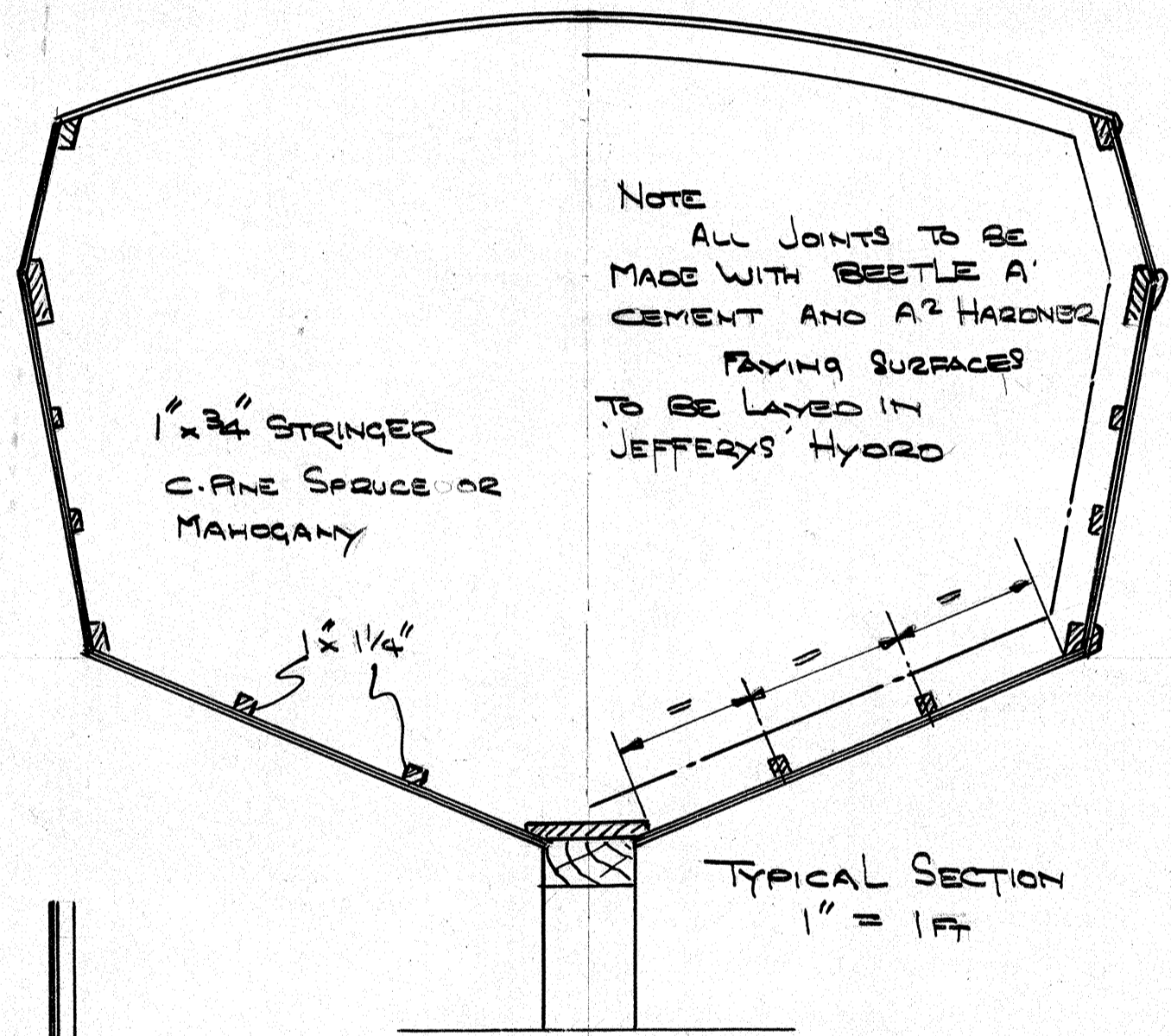
FOR ALL OTHER CONSTRUCTION DETAILS
SEE DRG NO 145 SH 2



FULL SIZE SECTION OF SCARF 'X X'



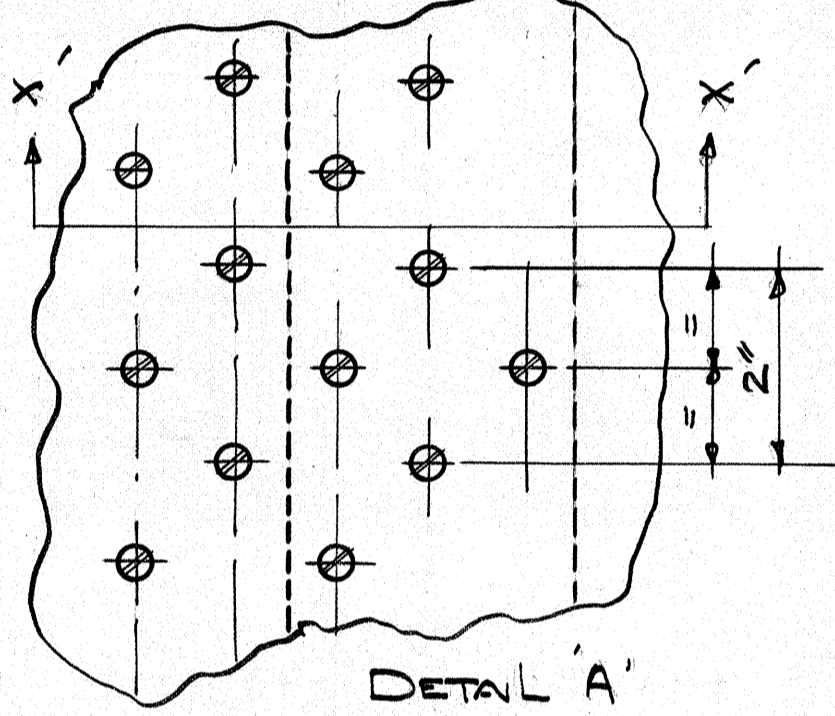
DETAIL OF STEM



NOTE
ALL JOINTS TO BE
MADE WITH BEETLE A
CEMENT AND A2 HARDENER
FINISH SURFACES
TO BE LAYED IN
JEFFERYS HYDR

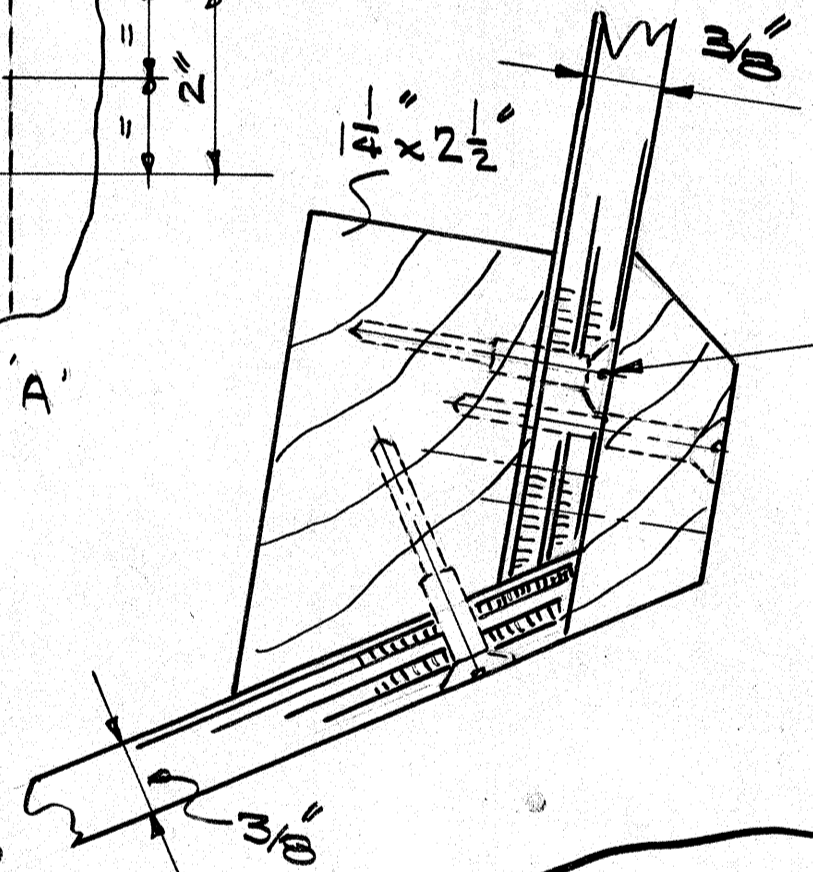
1' x 3/4" STRINGER
C.P.NE SPRUCE OR
MAHOAGANY

TYPICAL SECTION
1" = 1/4"

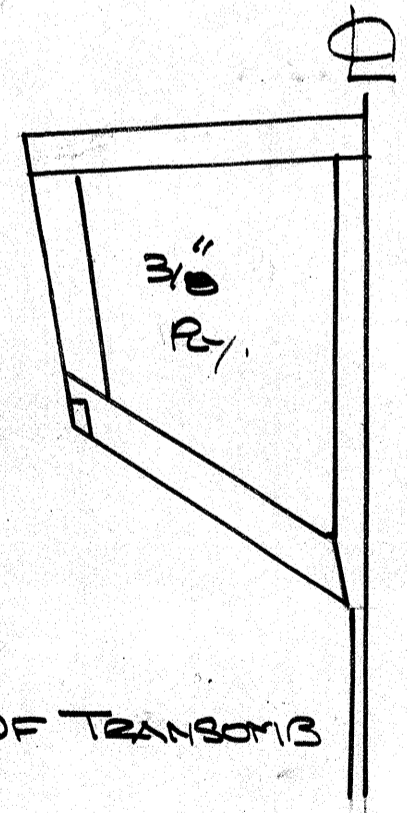


DETAIL 'A'

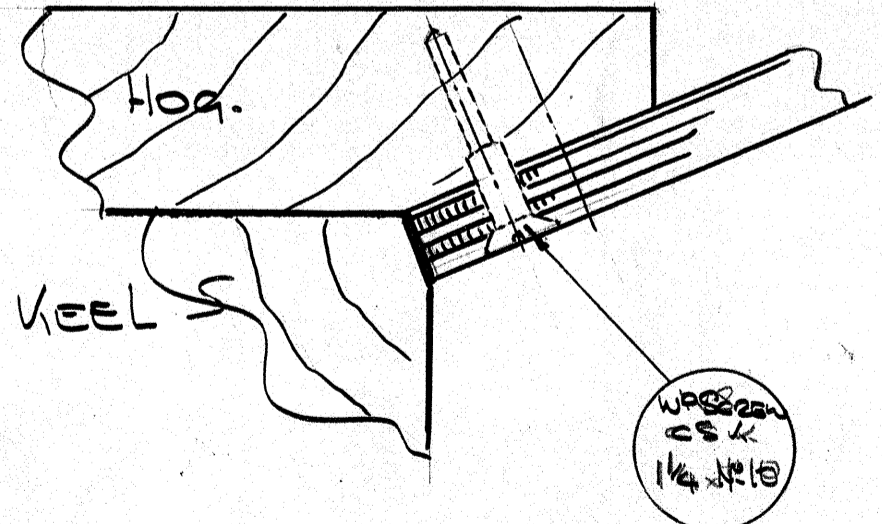
PLANKING
RESIN-BOLDED MARINE
PLY BS.1 10BB



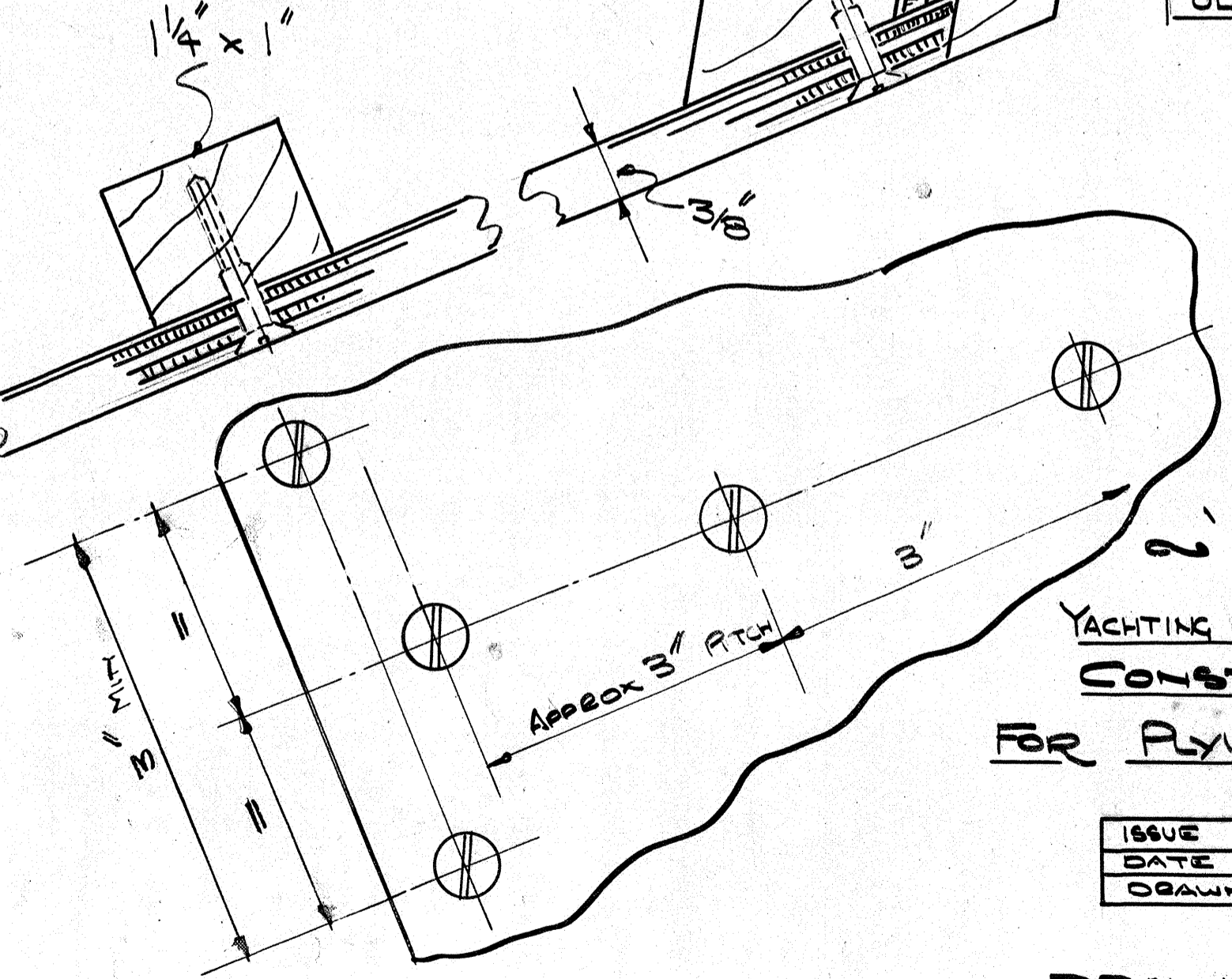
FULL SIZE DETAILS



VIEW OF TRANSOM



KEEL



2' WILD DUCK 2

YACHTING MONTHLY 16/19 SLOOP.
CONSTRUCTION DETAILS
FOR PLYWOOD PLANKED HULL

ISSUE	A		
DATE	20.6.66		
DRAWN	A-H-3		

DRAWING NO 145 SH 5

YACHTING MONTHLY 16/19 SLOOP

DESIGNED BY ALAN BUCHANAN A.I.Z.A

YACHTING MONTHLY LTD
3 RA CLEMENTS INN.
LONDON. W.C.2.