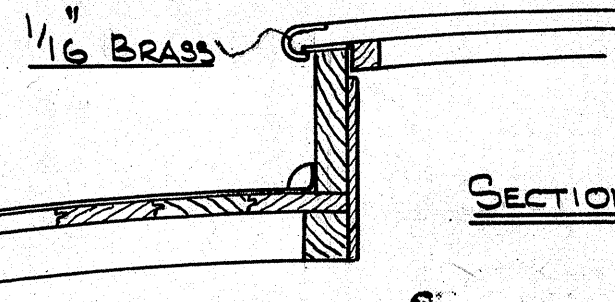


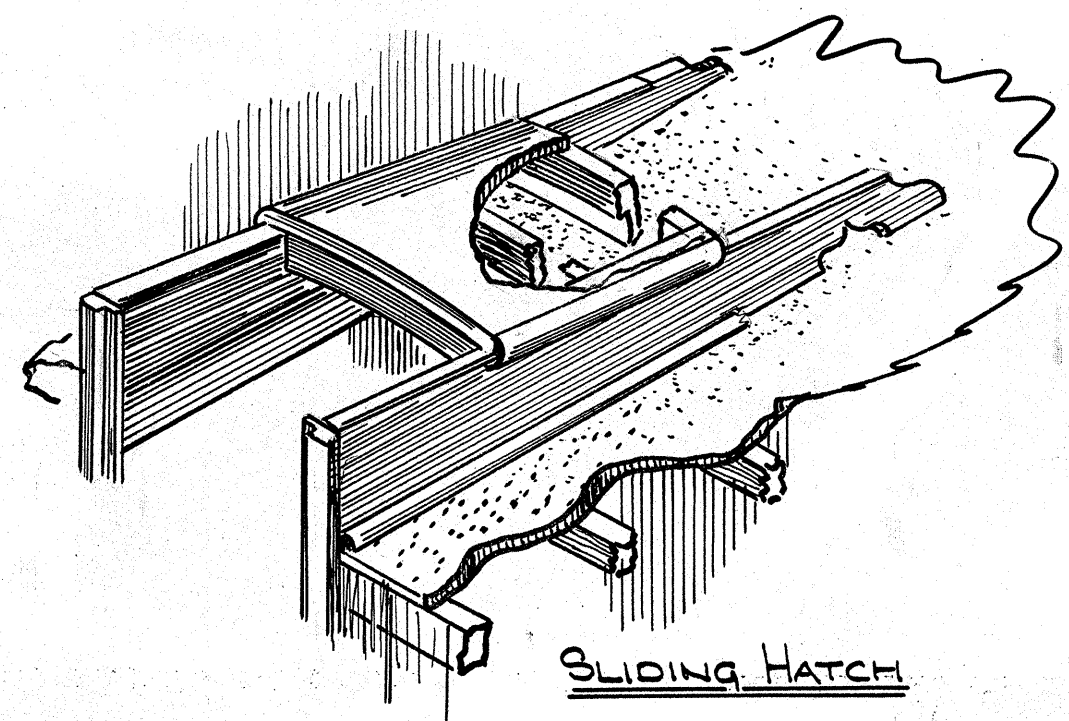


SCALE IN FEET.

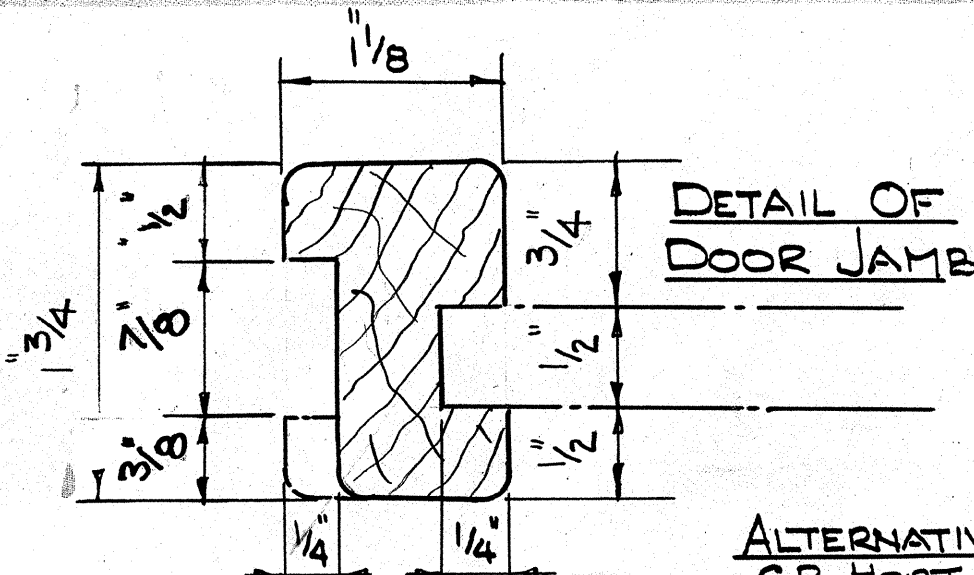
1/8 x 1/4 BRASS SLIDE



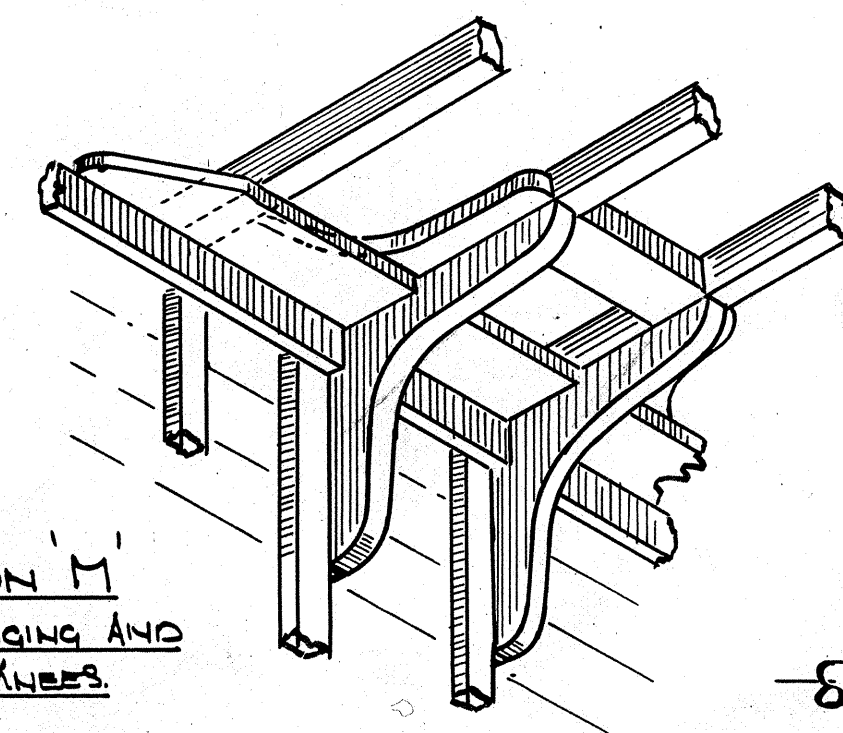
SECTION AT XX



SLIDING HATCH



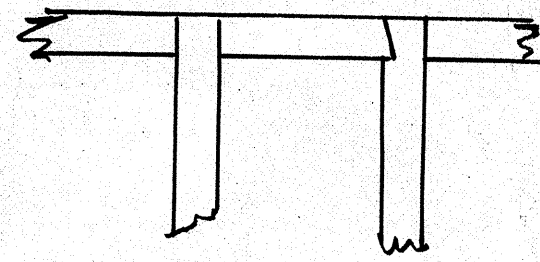
DETAIL OF DOOR JAMB



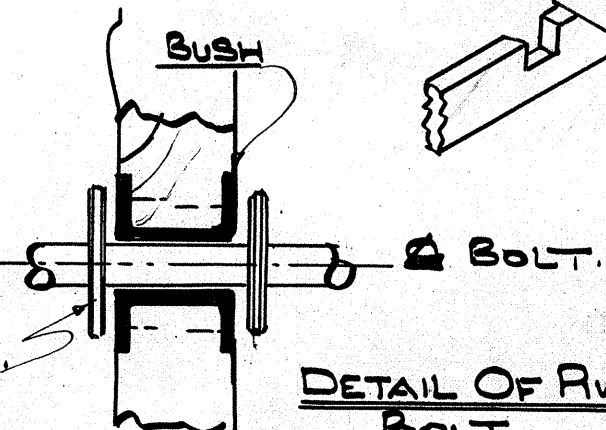
VIEW ON M
SHOWING HANGING AND
LODGING KNEES

NOTE: - ALL WOODWORK TO BE TREATED WITH CUPRINOL PRESERVATIVE BEFORE PAINTING.

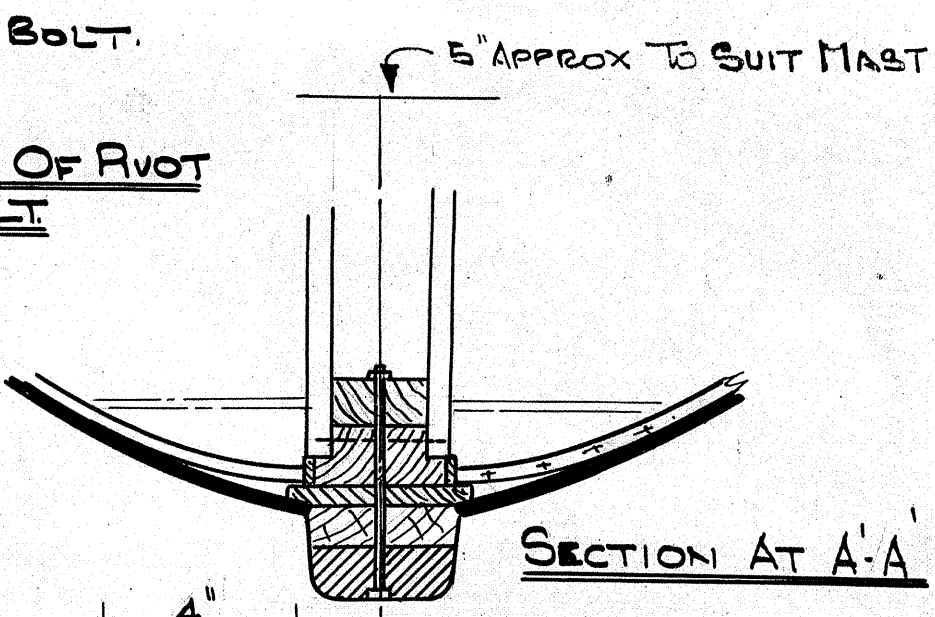
MAIN BEAMS ONLY



DETAIL OF DECK BEAM

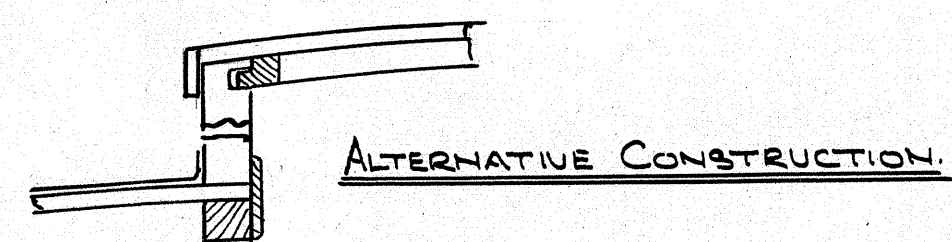


DETAIL OF PIVOT BOLT



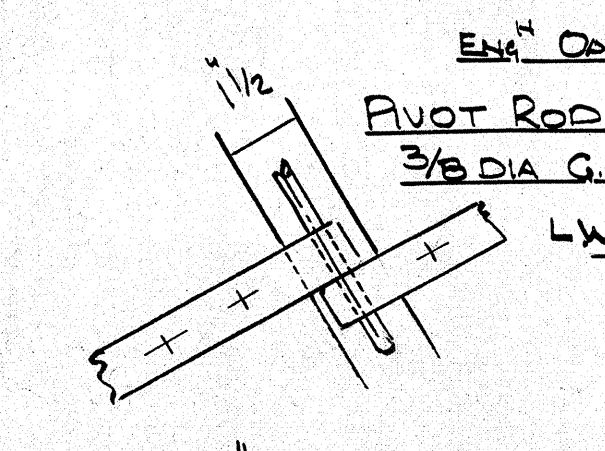
SECTION AT A-A

ALL CLEATS OF OAK



ALTERNATIVE CONSTRUCTION

TRANSOM 1/4 THICK MAHOGANY, OAK OR ELM



DETAIL OF GUDGEON IRON

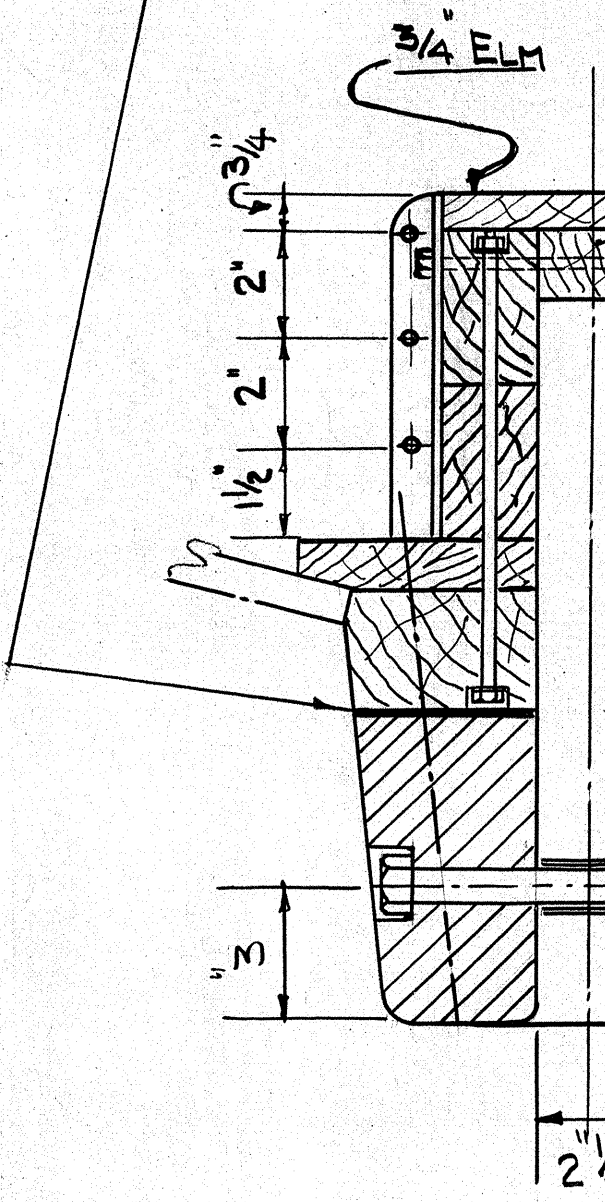
RUDDER HANGING OF GALVANISED IRON

1/4 OR 3/8 PLATE GLASS



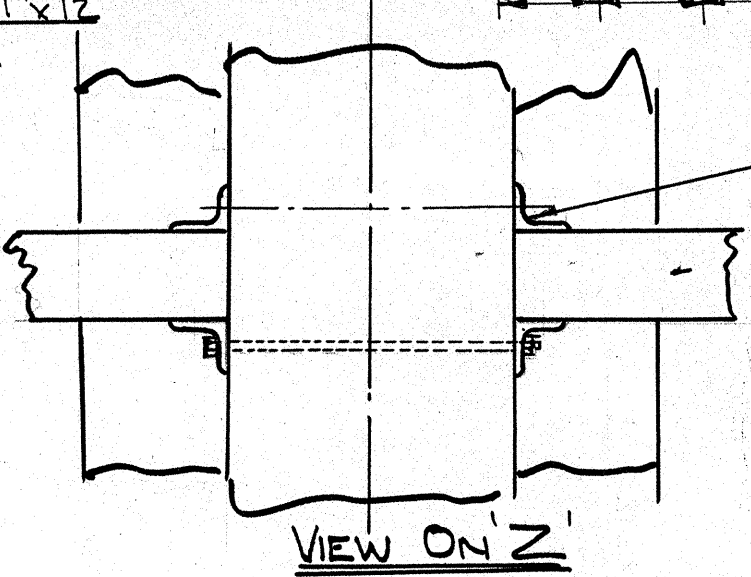
SECTION OF FIXED TRUNK PORT

WICKING OR CANVAS LAID IN WET PAINT ON TOP OF CAST IRON KEEL

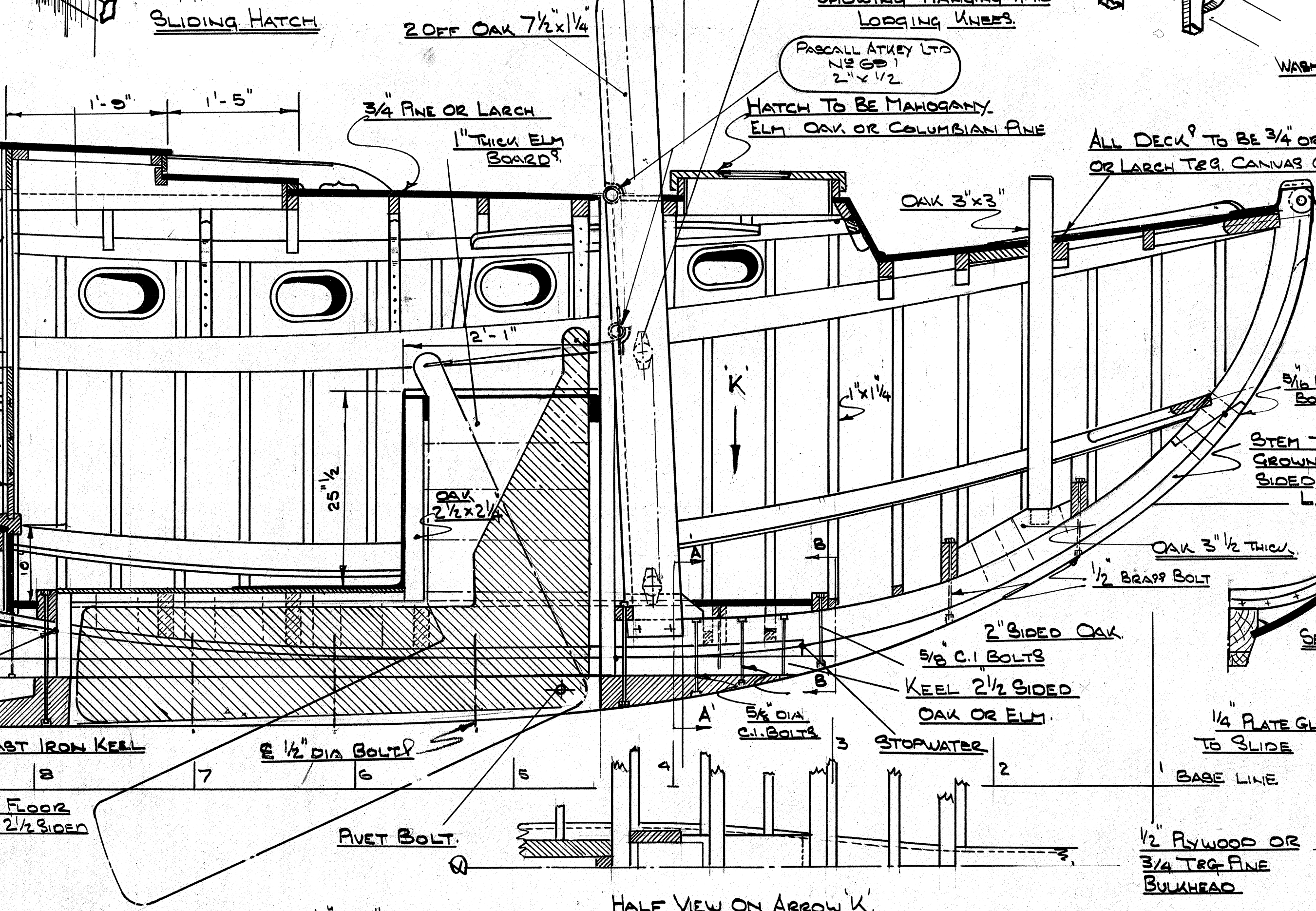


TYPICAL SECTION OF KEEL AND C.B. BOX

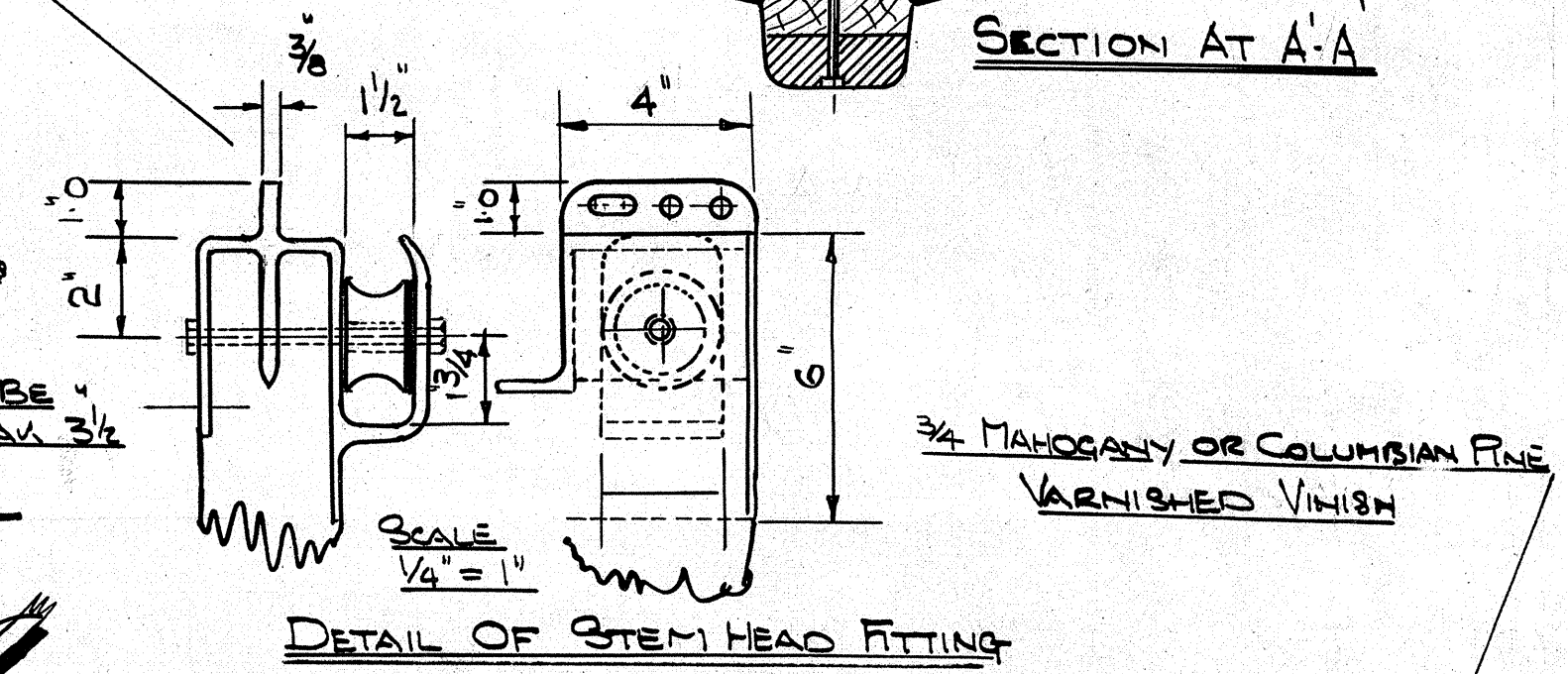
SCALE 1/4" = 1"



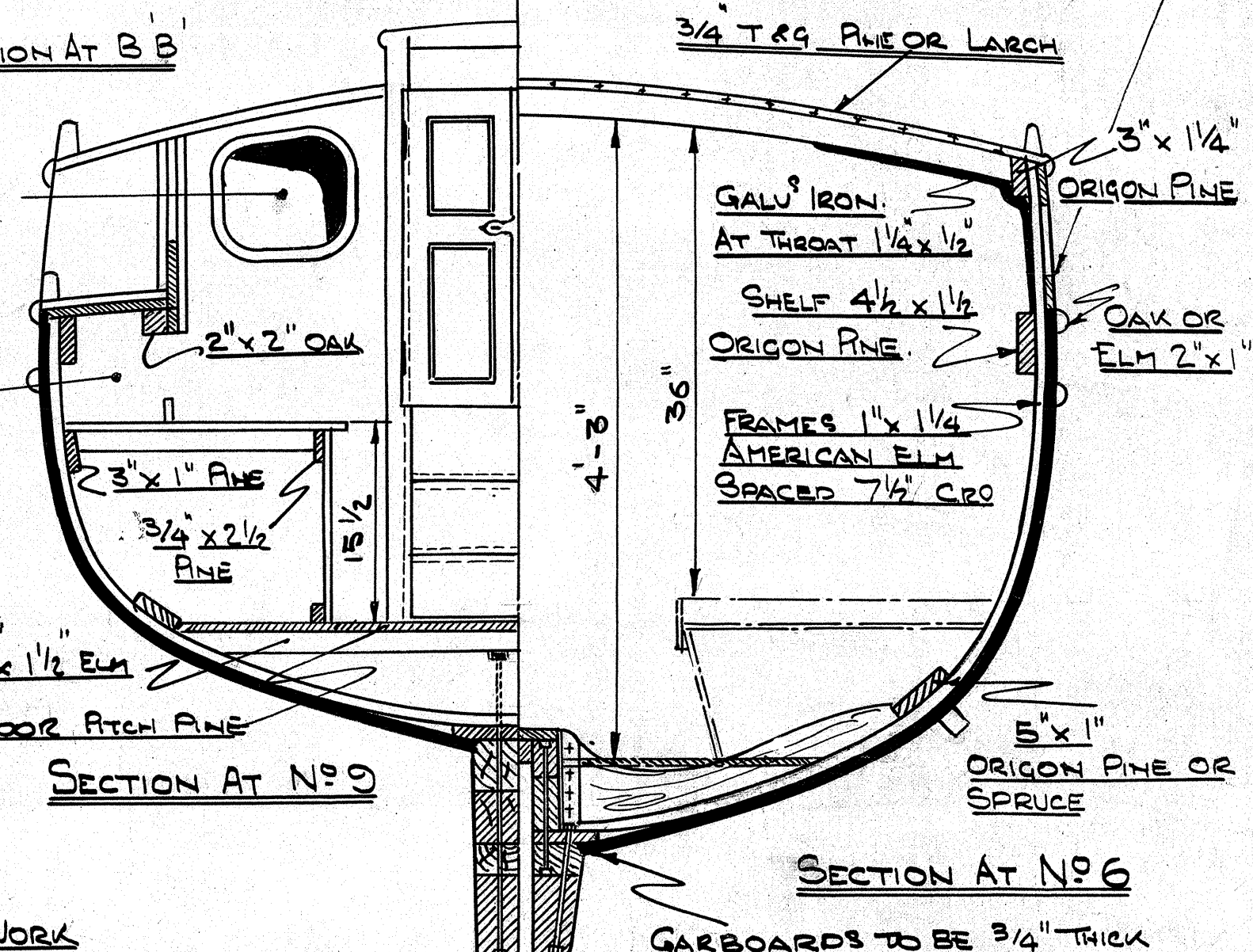
VIEW ON Z



HALF VIEW ON ARROW K



DETAIL OF STEM HEAD FITTING



SECTION AT N-9



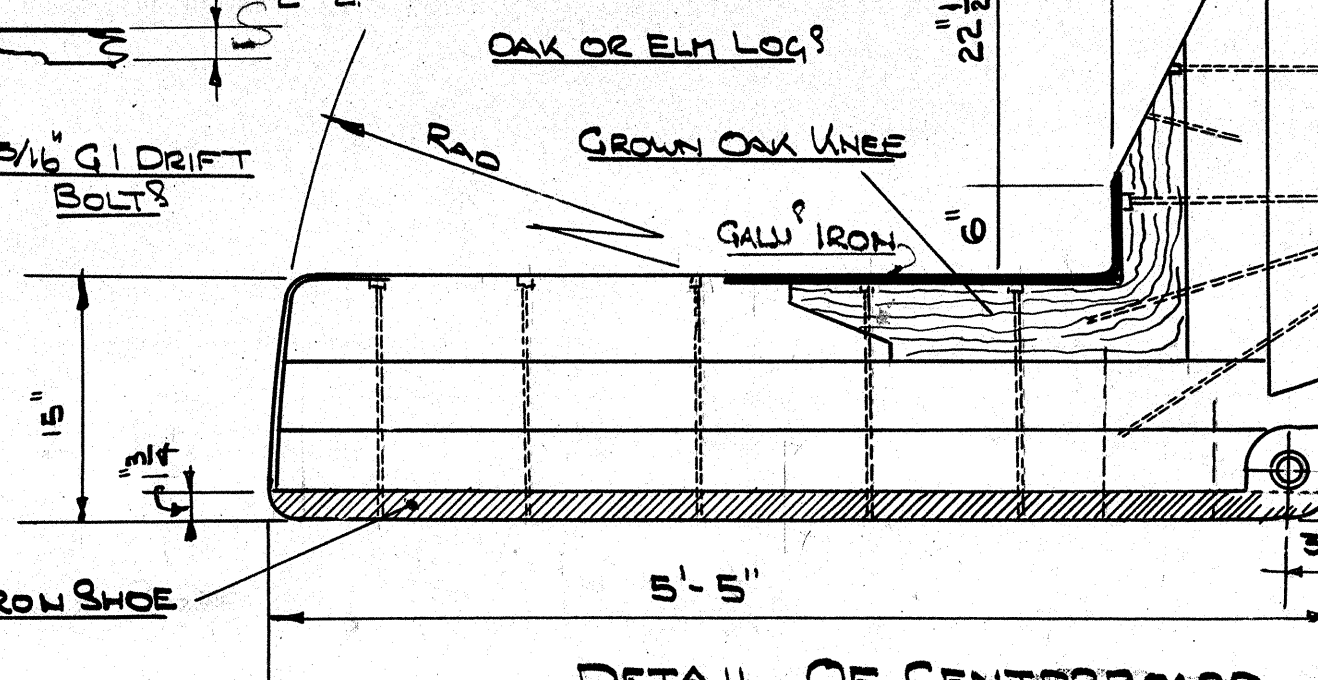
SECTION AT N-6



DETAIL OF CHAIN PLATE FITTING

PLANKING 3/4" FINISHED THICKNESS MAHOGANY PITCH PINE, LARCH OR COLUMBIAN PINE CAULKED WITH COTTON

DETAIL OF RAIL



DETAIL OF CENTERBOARD

- CENTERBOARD. CENTERBOARD TO BE BUILT UP WITH OAK OR ELM LOGS WITH CAST IRON SHOE AS SHOWN.
- MAY BE CUT FROM RESIN BONDED WATERPROOF PLYWOOD 1" THICK OR 2 BOARDS 3/4" THICK.
- MAY BE MADE FROM A 3/8" MS PLATE TO BE GALVANISED AFTER CUTTING.

DOUBLE FASTENING ALL PLANKING TO BE FASTENED WITH 1/2" OR 10 SWG COPPER BOAT NAILS RIVETED UP ON COPPER ROVES OR BUSHES. DECK FASTENINGS MAY BE GALVANISED IRON ALSO ANY OTHER DEAD FASTENINGS SUCH AS BULKHEADS ETC.

THE YACHTING MONTHLY 3 TONNER

LENGTH O.A.	20'-0"
LENGTH L.W.L.	17'-0"
BEAM MAX	7'-1/4"

DESIGNED BY A.H. BUCHANAN.			
FOR THE YACHTING MONTHLY LTD			
ISSUE	A	DATE 14-4-45	NO OF SHEETS 6
TITLE: G.A. OF CONSTRUCTION FOR YACHTING MONTHLY 3 TON SLOOP.		APPROVED FOR Y.M. R.C.G.	SHEET NO 2
DRG NO 109			