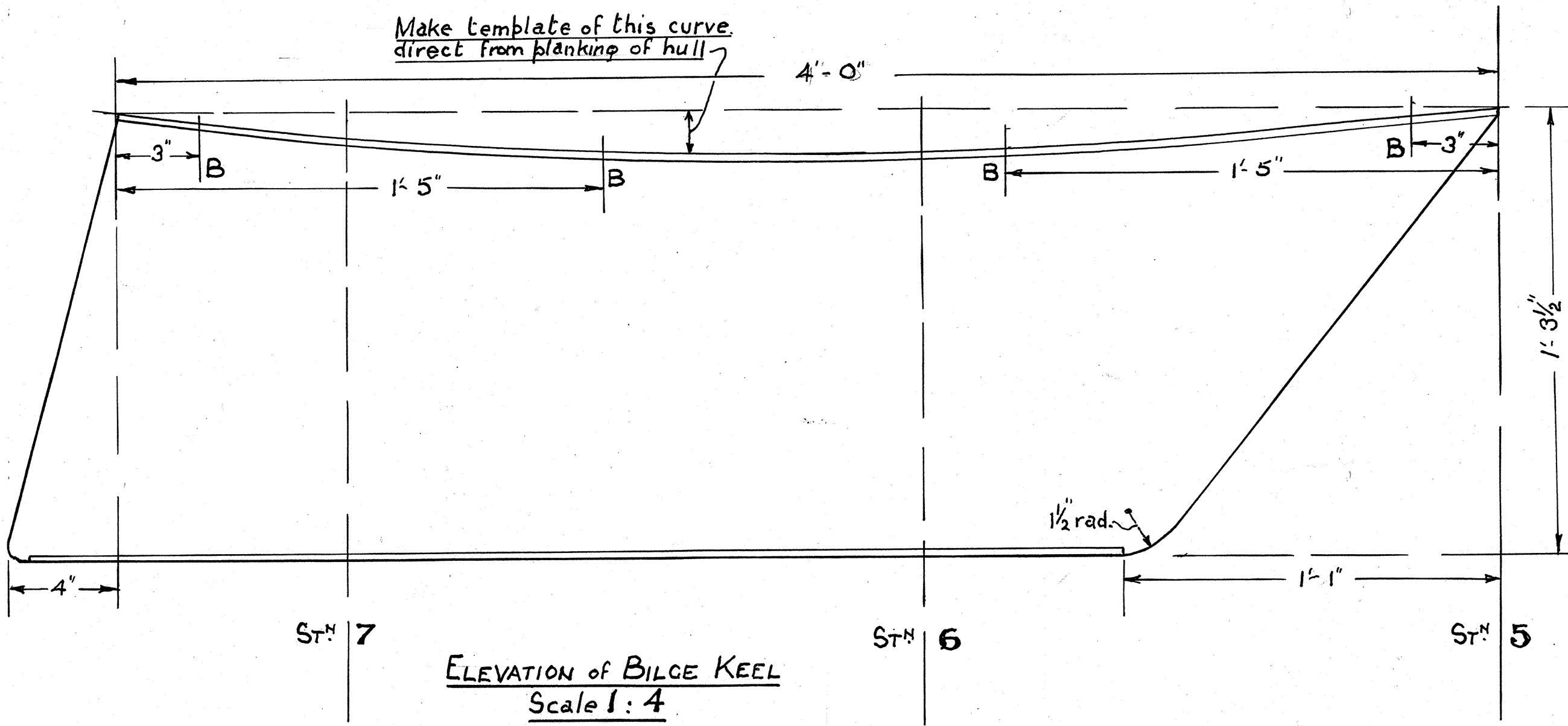
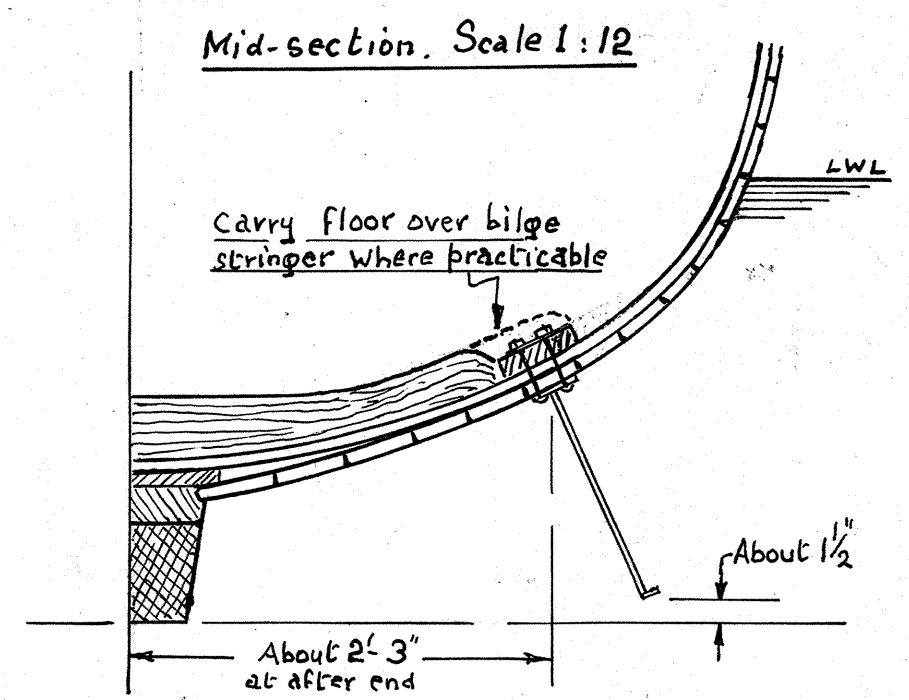


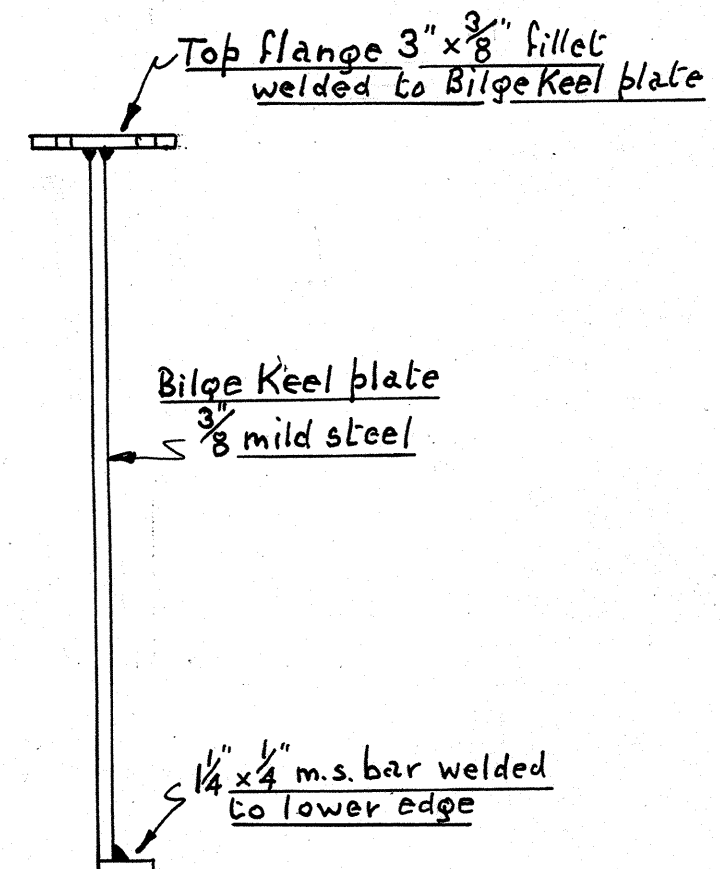
SECTION through BILGE KEEL & STRINGER  
Scale 1:2

**NOTE** Bilge Keels should be spaced approx. 2'-3" at  $\phi$  of top flange from  $\phi$  of Keel at aft end. It's **IMPORTANT** that both bilge keels be given a toe-in ("squint") of 1/4" at forward ends.



ELEVATION of BILGE KEEL  
Scale 1:4

Drill top flange for 3/8" bolts in pairs spaced as at B, B. Centres of holes to be 5/8" from edge of flange.



BILGE KEELS FOR  
**YACHTING MONTHLY 3-TONNER**  
No 109  
ADDITIONAL SHEET 9 by MAURICE GRIFFITHS, AMRINA.  
7/60